

CERTIFICATE OF INCORPORATION
VILLAGE OF RAYMOND
RACINE COUNTY, WISCONSIN

I, Joel T. Brennan, Secretary of Administration and Custodian of the Records relating to incorporations of villages and cities, **DO HEREBY CERTIFY THAT:**

WHEREAS, The Clerk of the Town of Raymond, Linda Terry, did, on the 10th day of April, 2019 submit to the Secretary of Administration documents pertaining to the incorporation of the Town of Raymond as a village under the provisions of §66.0203 (10) Wisconsin Statutes, and the Town Clerk of the Town of Raymond certified on April 9th, 2019 that pursuant to the return of votes cast at the election held and canvassed on April 2nd, 2019, on the question of whether the Town of Raymond should be incorporated as a village, a majority of the votes were cast in favor of a village as follows:

FOR the village: 1034

AGAINST the village: 233

The territory for incorporation of the Village of Raymond has an estimated population of 3,988 persons

NOW, THEREFORE, I, Joel T. Brennan, Secretary of Administration, pursuant to Wisconsin Statutes 66.0203 (10), do hereby declare that the area, as legally described and shown by map on the following pages and situated in the County of Racine, State of Wisconsin, is duly incorporated as a village and that from henceforth the said village shall be known as the:

VILLAGE OF RAYMOND

and be governed by the provisions of Chapter 66 of the Wisconsin Statutes and Laws amendatory thereof and supplementary thereto.

IN TESTIMONY WHEREOF, I have hereunto set my hand in the City of Madison, this 15th day of April, 2019.

Joel T. Brennan
Secretary of Administration

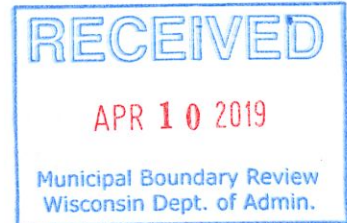
Town of

RAYMOND

2255 76th Street | Franksville, WI 53126-9539 | Phone: (262) 835-4426 | Fax: (262) 835-4449 | Website: raymondtownof.com

April 10, 2019

Joel Brennan, Secretary
Wisconsin Department of Administration
101 E. Wilson Street, 10th Floor
Madison Wisconsin, 53703



Re: Request for a Certificate of Incorporation for the Village of Raymond

Dear Mr. Brennan:

Pursuant to Wis. Stats, s. 66.0203(10), the Town of Raymond held a referendum on April 2, 2019, to ask the electors whether they were for or against the incorporation of the town as a village. The unofficial tabulation of votes on April 2, 2019, was 1034 for a village and 233 against a village. The municipal board of canvass confirmed the official vote tabulation on April 2, 2019, which was 1034 for a village and 233 against a village.

We are submitting the following information to the Wisconsin Department of Administration and hereby request issuance of a Certificate of Incorporation for the Village of Raymond:

1. Town Clerk's certification of the fact of incorporation and official referendum results based on the canvass held on April 2, 2019.
2. Resolution **18-11-26A** that initiated the referendum process.
3. Four (4) copies of the description of the legal boundaries of the town.
4. Four (4) copies of a plat of the town.
5. Incorporation fee of One Thousand Dollars (\$1,000.00) payable to the Wisconsin Department of Administration.

By copy of same, we are also sending this letter, the Town Clerk's certification and Town Board Resolution 18-11-26A to the Racine County Clerk.

If you need any additional information or have questions regarding this submission, feel free to contact me. Thank you for your cooperation in issuing the Certificate of Incorporation to the Village of Raymond.


Linda M. Terry
Clerk

RAYMOND

CERTIFICATION OF OFFICIAL ELECTION RESULTS AND INCORPORATION OF THE VILLAGE OF RAYMOND

I, Linda Terry, being first duly sworn on oath, depose and certify as follows:

1. I am the duly appointed and acting Clerk for the Town of Raymond. Racine County, State of Wisconsin.
2. A referendum election was held in the Town of Raymond on April 2, 2019, pursuant to Wis. Stats, s. 66.0203(10).
3. The official canvass of the votes cast was held on April 2, 2019. The official results of the canvass on the question:

"Shall the Town of Raymond be incorporated as a Village?" are:
1034 votes cast FOR A VILLAGE
233 votes cast AGAINST A VILLAGE

I hereby certify the fact of incorporation of the Town of Raymond as the Village of Raymond, effective the 2 day of April 2019.


 Linda M. Terry
 Raymond Town Clerk

ACKNOWLEDGMENT

STATE OF WISCONSIN)
)ss.
 RACINE COUNTY)

Subscribed and sworn to by the above named Linda Terry to me known to be the Raymond Town Clerk and person who executed the foregoing instrument and acknowledged the same on this 2nd day of April, 2019.

James P. Walsh, Notary Public

My Commission expires: 6-13-21

Inspectors' Statement

We, the undersigned election inspectors, certify the following is a true and correct statement for an election held in the 1-6 ward(s) of the Town of Raymond, County of Racine, State of Wisconsin, on the 1 day of April, 2019.

(ward number(s)) (Town, Village or City) (Name of Municipality) (Name of County) (Day) (Month) (year)

MUNICIPAL CLERK PROVIDES THE FOLLOWING INFORMATION:

Voting Unit Number _____ Memory Device Serial Number _____
 Tamper-Evident Seal Serial Number _____

THIS SECTION TO BE COMPLETED BY CHIEF INSPECTOR:

VOTING EQUIPMENT/BALLOT CONTAINER CHAIN-OF-CUSTODY RECORD

- Tamper-evident seal number verified by chief inspector (CI): Pre-election OW Post-election OW
(CI initials) (CI initials)
- Upon sealing the ballot bag or container to which this Inspectors' Statement pertains, record the number of the tamper-evident seal used for this purpose here _____

THIS SECTION TO BE COMPLETED BY ELECTION INSPECTORS AND VERIFIED BY CHIEF INSPECTOR:

VOTER STATISTICS

Total number of voters (last voter number on poll list) 1338 Total number of EDRs 24
(Absentee voters and in-person voters. Do not include provisional voters.) (Election Day Registrations)

Number of absentee voters 110 Number of provisional ballots 0

Total Number of ballots cast 1338 Number of ballots in excess of total number of voters 0

Number of votes cast on:
 paper (hand count) ballots 0, optical scan ballots 1338, DRE (touch screen) 0

Signatures of Election Inspectors

Alexis E. Cross Pat Bichenech
Ben Dittelbach Sharon Sprague
Kimberly A. Kenna James K. Renner

Time Worked

_____ to _____
 _____ to _____
 _____ to _____

CERTIFICATION OF CHIEF INSPECTOR

I certify that: I have completed the required training administered by the Wisconsin Elections Commission, and have been duly certified as a Chief Inspector. I served as the Chief Inspector for the election described above for the time period indicated below.

James E. Subel
(Signature of Chief Inspector)

ENTIRE DAY FROM 6:15 a.m. TO: 9:15 a.m.
5:00 p.m. 9:30 p.m.

(Signature of Chief Inspector)

FROM _____ a.m. TO _____ a.m.
p.m. p.m.

- ✓The completed form is retained in the office of the Municipal Clerk.
- ✓A copy of the completed form is returned to each Clerk with the other election forms.
- ✓Municipal clerk provides other copies as needed. Wis. Stat. § 7.51.

DO NOT SEAL IN BALLOT BAG!

IMAGECAST EVOLUTION (ICE) SEAL CERTIFICATION

OPENING of POLLS

Seal numbers correspond?:

Yes No - If no, call

Municipal/County Clerk

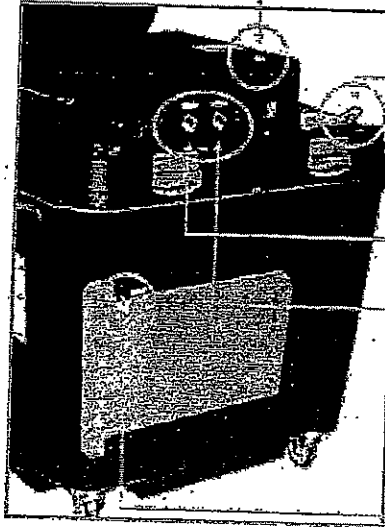
I do hereby certify the security seals are correct at Opening of Polls.

Janice E Welch

CHIEF ELECTION OFFICIAL PRINTED NAME

Janice E Welch

CHIEF ELECTION OFFICIAL SIGNATURE



Security Seal Numbers

Thermal Printer Door: 615723

Auxiliary Bin Door: 615757 @ close
615771 opening

Memory Device Doors:
CF1 Door: 697814

CF2 Door: 697815

Main Ballot Box Bin Door: 615772

CLOSE of POLLS

Seal numbers correspond?:

Yes No

I do certify the ICE Results Cartridge seal numbers at the CLOSE OF POLLS corresponds to the ICE Results Cartridge seal numbers at the time the polls were opened.

Janice E Welch

CHIEF ELECTION OFFICIAL PRINTED NAME

Janice E Welch

CHIEF ELECTION OFFICIAL SIGNATURE

If a seal number(s) does not correspond at opening or closing of polls, an explanation **MUST** be listed below:

The flap on the auxiliary bin door was not flipped open so ballots could be inserted. Seal 615771 was cut off, door flipped open & the bin re-sealed with #615757. Also noted in incident report.

NUMBER OF REJECTED BALLOTS
(Not opened by Inspectors for counting) -0-

NUMBER OF REMADE BALLOTS
(Remade by Inspectors) 3

TOTAL NUMBER OF BALLOT BAG(S) 5

Bag or Box #1 - Security Seal No. 76321

Bag or Box #5 - Security Seal No. 77093

Bag or Box #2 - Security Seal No. 79573

Bag or Box #6 - Security Seal No. _____

Bag or Box #3 - Security Seal No. 8068

Bag or Box #7 - Security Seal No. _____

Bag or Box #4 - Security Seal No. 77092

Bag or Box #8 - Security Seal No. _____

Raymond — 4-2-19

Check box if no incidents were recorded for this election.

Incident Log

(Please refer to the Election Day Manual for detailed procedures!)

Incident Number	Incident Code (See glossary)	Description of Incident	Time Incident Occurred	Election Official Initials
1	X	obscure Mark on ballot	7:50 a.m. p.m.	SK
2	X	Remade ballot #1 - damaged ballot	8:02 a.m. p.m.	GW
3	R	Machine Jam - ballot retrieved See remark #3 ballot #2	8:43 a.m. 8:46 p.m.	GW
4	X	Removed seal from auxiliary bin because door wasn't open. Flap opened + resealed w/ seal # 615757	8:50 a.m. p.m.	GW JW
5	R	Remade ballot #2 See incident #3	9:03 a.m. p.m.	GW GW
6	X	over vote	9:15 a.m. p.m.	SK
7	X	ovals not filled in	10:45 a.m. p.m.	SK
8	X	ovals not filled in	10:55 a.m. p.m.	SK
9	X	obscure mark	11:55 a.m. p.m.	SK
10 11 12	X	Machine indicated obscure mark	1:05 a.m. p.m.	SK
13		4 times - Replaced Pens in booths	a.m. p.m.	SK
2 ballots	X	2 ballots in over ride area - auxiliary	1:10 a.m. p.m.	SK
14	X	obscure mark	1:48 a.m. p.m.	SK
15	X	over voted	3:00 a.m. p.m.	SN
16	X	Wrong Marking	3:30 a.m. p.m.	SN
17	X	over voted	3:30 a.m. p.m.	SN
18	X	Wrong Marking	3:31 a.m. p.m.	SN
19	X	Wrong Marking	3:32 a.m. p.m.	SN
20	X	Wrong Marking	3:45 a.m. p.m.	SN
21	X	over voted	4:05 a.m. p.m.	SN

Check box if no incidents were recorded for this election.

Incident Log

(Please refer to the Election Day Manual for detailed procedures!)

Incident Number	Incident Code (See glossary)	Description of Incident	Time Incident Occurred	Election Officials Initials
22		Over Vote	4:55 a.m. p.m.	SN
23		Wrong Marks	4:55 a.m. p.m.	SN
24		Wrong Marks	4:55 a.m. p.m.	SN
25		Paper Jam - Remade Ballot #3	5:45 a.m. p.m.	SN
26		wrong marks - the filled them in	6:00 a.m. p.m.	SN
27		not reading sheet - did over	6:00 a.m. p.m.	SN
28	R	Remade ballot #4 ^{Remade Ballot} not inserted _{or numbered}	6:50 a.m. p.m.	off
29		wrong marking	7:15 a.m. p.m.	SN
30		There was a ballot stuck under voting machine - around rollers - it was counted, but never dropped.	a.m. p.m.	JMT
			a.m. p.m.	
			a.m. p.m.	
			a.m. p.m.	
			a.m. p.m.	
			a.m. p.m.	
			a.m. p.m.	
			a.m. p.m.	
			a.m. p.m.	
			a.m. p.m.	
			a.m. p.m.	
			a.m. p.m.	
			a.m. p.m.	
			a.m. p.m.	
			a.m. p.m.	
			a.m. p.m.	
			a.m. p.m.	

RAYMOND

2255 76th Street | Franksville, WI 53126-9539 | Phone: (262) 835-4426 | Fax: (262) 835-4449 | Website: raymondtownof.com

RESOLUTION NO. 18-11-26A

**TOWN OF RAYMOND, RACINE COUNTY, WISCONSIN
A RESOLUTION TO INITIATE PROCEDURE
FOR INCORPORATING THE TOWN OF RAYMOND AS A VILLAGE
BY PROVIDING FOR A REFERENDUM ON APRIL 2, 2019**

**THE TOWN BOARD OF THE TOWN OF RAYMOND, RACINE COUNTY, WISCONSIN,
RESOLVES AS FOLLOWS:**

WHEREAS, the Town Board wishes to initiate the procedure for incorporation of the Town of Raymond as the Village of Raymond; and

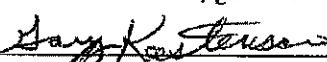
WHEREAS, the Town Board has verified that the Town of Raymond meets the requirements for incorporation as a Village pursuant to Wis. Stat. §66.0203(10), because it is adjacent to the Village of Mount Pleasant which, effective January 1, 2018, contains an electronics and information technology manufacturing zone designated under Wis. Stat. §238.396(1m); and

WHEREAS, the Town Board of Raymond ("Town Board"), wishes to allow the electors of the Town of Raymond the opportunity to determine whether the Town of Raymond should incorporate and become the Village of Raymond, as provided by Wis. Stat. §66.0203(10); and

NOW, THEREFORE, BE IT RESOLVED,

1. The Town Board hereby confirms and supplements the procedure for incorporating the Town of Raymond as the Village of Raymond pursuant to Wis. Stat. § 66.0203(10), by adopting this Resolution providing for a referendum on the question of whether the Town of Raymond should become a Village.
2. A referendum election shall be held on Tuesday, April 2, 2019, pursuant to Wis. Stat. §66.0211(3) and Wis. Stat. §66.0217(7), to the extent applicable. The ballot question on the referendum shall contain the words "For a Village;" and "Against a Village."
3. The territory which is proposed to be incorporated includes all of the territory located within the boundaries of the Town of Raymond as it exists as of the date of the referendum election on April 2, 2019. A map of the territory proposed to be incorporated is attached at **Exhibit A** to this Resolution.
4. The Town Clerk for the Town of Raymond is directed to take such actions as are necessary to implement this Resolution and schedule the referendum election.
5. The Town Clerk is further directed to post this Resolution on the Town of Raymond's website and to publish the Resolution as a Class 1 notice pursuant to the provisions of Chapter 985 of the Wisconsin Statutes.

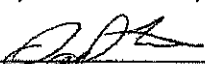
The above Resolution was duly adopted at a meeting of the Town Board of the Town of Raymond on the 26 day of Nov, 2018.




Chairman Gary Kastenson



Supervisor Paul Ryan



Supervisor Dave Lecus



Supervisor Doug Schwartz



Supervisor Tim Gersvain



Town Clerk Linda M. Terry



CREATIVITY BEYOND ENGINEERING

R.A. Smith, Inc.
16745 W. Bluemound Road
Brookfield, WI 53005-5938
(262) 781-1000 | rasmith.com

CORPORATE LIMITS
VILLAGE OF RAYMOND, RACINE COUNTY

All of Sections 1 through 36, Town 4 North, Range 21 East, Village of Raymond, Racine County, Wisconsin Bounded and described as follows:

Beginning at the Northeast corner of said Section 1; thence South 00° 20' 02" East along the East line of Section 1 a distance of 2436.62 feet to a point; thence South 00° 06' 21" East along the East line of Section 1 a distance of 2627.55 feet to a point; thence South 00° 52' 08" East along the East line of Section 12 a distance of 2661.93 feet to a point; thence South 00° 45' 46" East along the East line of Section 12 a distance of 2655.10 feet to a point; thence South 00° 33' 09" East along the East line of Section 13 a distance of 2651.18 feet to a point; thence South 00° 13' 08" East along the East line of Section 13 a distance of 2651.78 feet to a point; thence South 00° 16' 26" East along the East line of Section 24 a distance of 2651.22 feet to a point; thence South 00° 32' 36" East along the East line of Section 24 a distance of 2650.17 feet to a point; thence South 00° 37' 26" East along the East line of Section 25 a distance of 2656.21 feet to a point; thence South 00° 43' 30" East along the East line of Section 25 a distance of 2635.37 feet to a point; thence South 00° 33' 50" East along the East line of Section 36 a distance of 2640.61 feet to a point; thence South 00° 35' 59" East along the East line of Section 36 a distance of 2625.82 feet to a point; thence South 88° 53' 58" West along the South line of Section 36 a distance of 2646.85 feet to a point; thence South 88° 54' 04" West along the South line of Section 36 a distance of 2646.98 feet to a point; thence South 88° 50' 44" West along the South line of Section 35 a distance of 2638.61 feet to a point; thence South 88° 59' 16" West along the South line of Section 35 a distance of 2647.33 feet to a point; thence South 88° 54' 45" West along the South line of Section 34 a distance of 2639.34 feet to a point; thence South 88° 54' 44" West along the South line of Section 34 a distance of 2639.45 feet to a point; thence South 88° 29' 28" West along the South line of Section 33 a distance of 2636.21 feet to a point; thence South 88° 49' 01" West along the South line of Section 33 a distance of 2645.71 feet to a point; thence South 88° 25' 43" West along the South line of Section 32 a distance of 2643.03 feet to a point; thence South 88° 22' 45" West along the South line of Section 32 a distance of 2642.37 feet to a point; thence South 88° 29' 25" West along the South line of Section 31 a distance of 33.00 feet to a point; thence South 88° 29' 25" West along the South line of Section 31 a distance of 2603.51 feet to a point; thence South 88° 29' 25" West along the South line of Section 31 a distance of 28.50 feet to a point; thence South 88° 29' 25" West along the South line of Section 31 a distance of 2588.23 feet to a point; thence North 00° 30' 08" West along the West line of Section 31 a distance of 2611.22 feet to a point; thence North 00° 32' 38" West along the West line of Section 31 a distance of 2635.02 feet to a point; thence North 00° 25' 40" West along the West line of Section 30 a distance of 2618.12 feet to a point; thence North 00° 33' 57" West along the West line of Section 30 a distance of 2638.16 feet to a point; thence North 00° 27' 22" West along the West line of Section 19 a distance of 2642.66 feet to a point; thence North 00° 26' 24" West along the West line of Section 19 a distance of 2636.06 feet to a point; thence North 00° 28' 41" West along the West line of Section 18 a distance of 2633.37 feet to a point; thence North 00° 25' 15" West along the West line of Section 18 a distance of 2635.30 feet to a point; thence North 00° 38' 09" West along the West line of Section 7 a distance of 2635.45 feet to a point; thence North 00° 20' 56" West along the West line of Section 7 a distance of 2631.74 feet to a point; thence North 00° 28' 15" West along the West line of Section 6 a distance of 2607.57 feet to a point; thence North 00°

Brookfield, WI | Appleton, WI | Madison, WI | Cedarburg, WI | Mount Pleasant, WI
Naperville, IL | Pittsburgh, PA | Irvine, CA



Corporate Limits

Page 2 / November 19, 2018

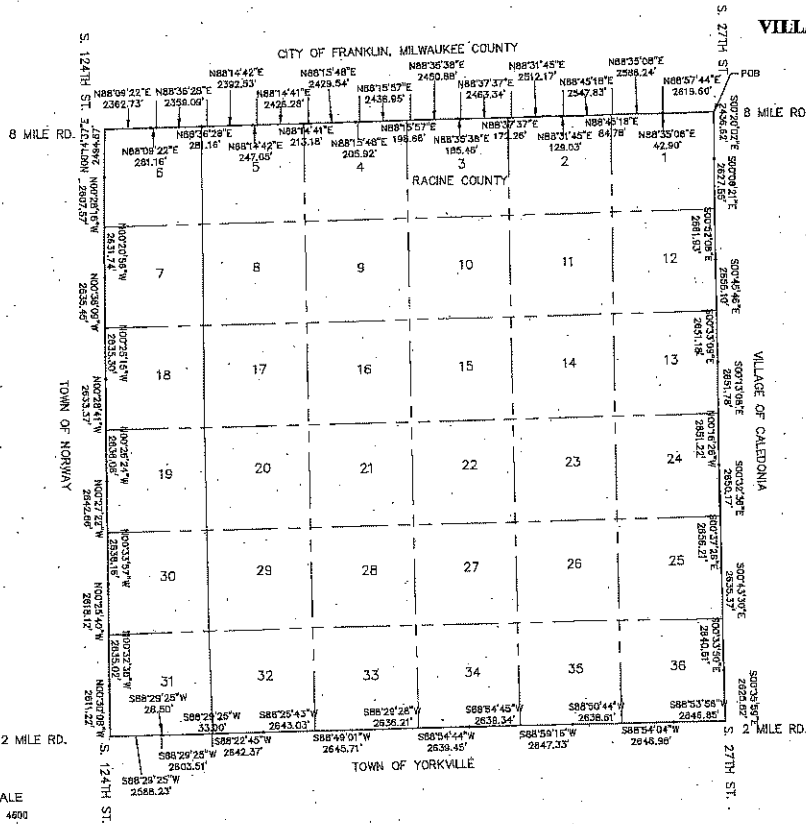
14' 37" East along the West line of Section 6 a distance of 2494.67 feet to a point; thence North 88° 09' 22" East along the North line of Section 6 a distance of 2362.73 feet to a point; thence North 88° 09' 22" East along the North line of Section 6 a distance of 281.16 feet to a point; thence North 88° 36' 28" East along the North line of Section 6 a distance of 2359.09 feet to a point; thence North 88° 36' 28" East along the North line of Section 5 a distance of 281.16 feet to a point; thence North 88° 14' 42" East along the North line of Section 5 a distance of 2392.53 feet to a point; thence North 88° 14' 42" East along the North line of Section 5 a distance of 247.05 feet to a point; thence North 88° 14' 41" East along the North line of Section 5 a distance of 2426.28 feet to a point; thence North 88° 14' 41" East along the North line of Section 4 a distance of 213.18 feet to a point; thence North 88° 15' 48" East along the North line of Section 4 a distance of 2429.54 feet to a point; thence North 88° 15' 48" East along the North line of Section 4 a distance of 205.92 feet to a point; thence North 88° 15' 57" East along the North line of Section 4 a distance of 2436.95 feet to a point; thence North 88° 15' 57" East along the North line of Section 3 a distance of 198.66 feet to a point; thence North 88° 35' 38" East along the North line of Section 3 a distance of 2450.88 feet to a point; thence North 88° 35' 38" East along the North line of Section 3 a distance of 185.46 feet to a point; thence North 88° 37' 37" East along the North line of Section 3 a distance of 2463.34 feet to a point; thence North 88° 37' 37" East along the North line of Section 2 a distance of 172.26 feet to a point; thence North 88° 31' 45" East along the North line of Section 2 a distance of 2512.17 feet to a point; thence North 88° 31' 45" East along the North line of Section 2 a distance of 129.03 feet to a point; thence North 88° 45' 18" East along the North line of Section 2 a distance of 2547.83 feet to a point; thence North 88° 45' 18" East along the North line of Section 1 a distance of 84.78 feet to a point; thence North 88° 35' 08" East along the North line of Section 1 a distance of 2588.24 feet to a point; thence North 88° 35' 08" East along the North line of Section 1 a distance of 42.90 feet to a point; thence North 88° 57' 44" East along the North line of Section 1 a distance of 2619.60 feet to the point of beginning. Containing 22,879 Acres, more or less.

Prepared by: John P. Casucci, PLS

Date: November 19, 2018

Project No.: 167742 / 1181000

CORPORATE LIMITS
VILLAGE OF RAYMOND, RACINE COUNTY, WISCONSIN
 Township 4 North, Range 21 East



PROJ. NO. 167742
 NOVEMBER 20, 2018

raSmith
 CREATIVITY BEYOND ENGINEERING

16742 W. Bluemound Road
 Brookfield, WI 53005-5938
 (262) 781-1000
 ra@smith.com

SHEET 1 OF 1