

STATE OF WISCONSIN

TOWN OF LISBON

WAUKESHA COUNTY

ORDINANCE NO. 2022-07

**AN ORDINANCE TO DETACH TERRITORY BY THE TOWN OF LISBON
TO THE VILLAGE OF SUSSEX IN ACCORDANCE WITH SECTION 66.0307 OF THE
WISCONSIN STATUTES**

WHEREAS, the Village of Sussex (“Sussex”) and the Town of Lisbon (“Lisbon”) have entered a Cooperative Boundary Plan Agreement (“CBP”) under Wisconsin statute §66.0307; and,

WHEREAS, the CBP provided for boundary changes between the municipalities as authorized by law; and

WHEREAS, §66.0307 provides that a boundary change under a cooperative plan shall be accomplished by the enactment of an ordinance by the governing body designated to do so in the plan; and

WHEREAS, boundary changes provided for in the plan will result in parcels being transferred from Lisbon to Sussex.

NOW, THEREFORE, BE IT HEREBY ORDAINED that the Town of Lisbon detaches the parcels more particularly described on attached maps hereto and incorporated herein by reference to the Village of Sussex, effective immediately.

FURTHER the Town Clerk is directed to comply with the notice and filing requirements under Wisconsin statute §66.0307 (10.).

This ordinance passed and adopted this 23rd day of May 2022.

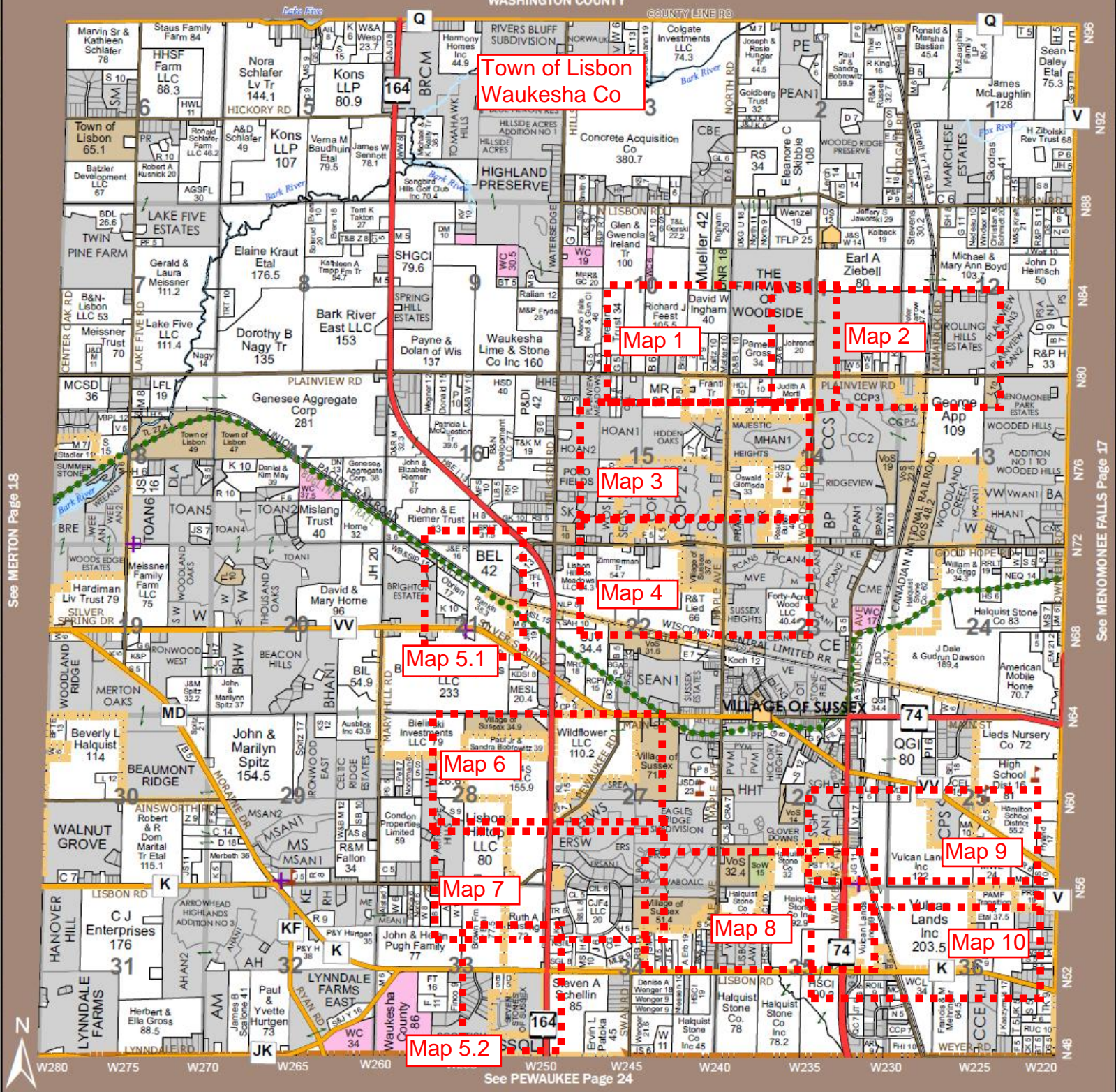
TOWN OF LISBON


Joseph Osterman, Chairman

Attest:


Elisa M. Cappozzo, Clerk





See MERTON Page 18

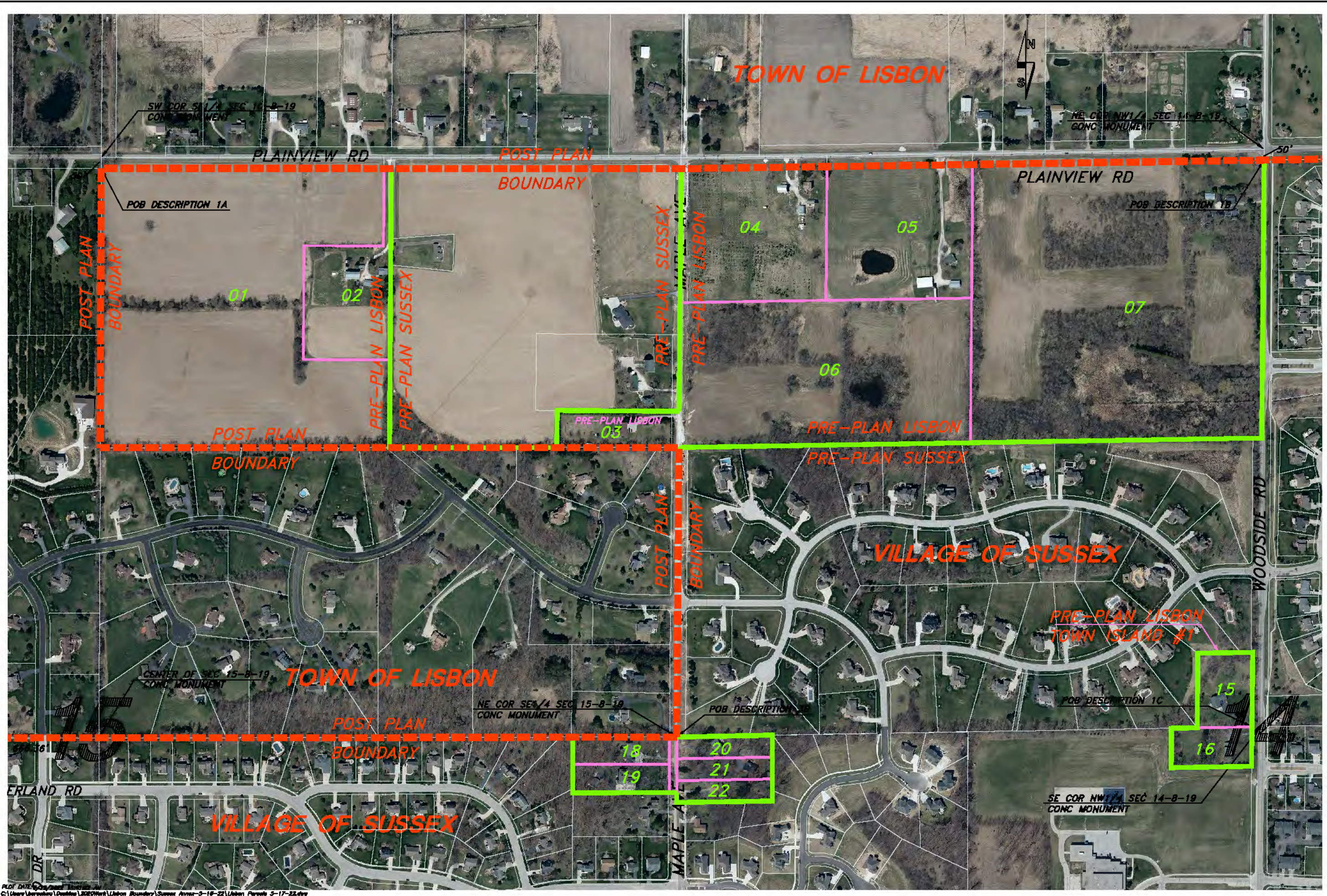
See MEMONONEE FALLS Page 17

See PEWAUKEE Page 24

Village of Sussex / Town of Lisbon
 2022 Boundary Agreement Attachment
 Map Key
 For Boundary Description Delineation Maps



5/19/2022



0 100 200
SCALE
REDUCED 1/2
REVISED 5/19/2022
SCALE : 1" = 200'

PROJECT : #A117.0283	DATE : 5/9/22	DRAWN BY : BAO	APPROVED BY : BAO
----------------------	---------------	----------------	-------------------

VILLAGE OF SUSSEX / TOWN OF LISBON
2022 BOUNDARY AGREEMENT ATTACHMENT
MAP ONE

KUNKEL
engineering
group
107 Parallel Street
Beaver Dam, WI 53916
(920)358-8447
Fax (920)358-8484

PLT DATE: 05/19/22
C:\Users\jbruehler\Desktop\BROWWork\Lisbon Boundary\Sussex Annex-5-18-22\Lisbon Parcels 5-17-22.dwg

TOWN OF LISBON

NW COR NW1/4 SEC 13-8-19
CONC MONUMENT

POB DESCRIPTION 2B

PLAINVIEW RD

POST PLAN
BOUNDARY

229.5'

POB DESCRIPTION 2A

NE COR NW1/4 SEC 13-8-19
CONC MONUMENT

POST PLAN
BOUNDARY

GOLDWATER CIR

VILLAGE OF SUSSEX

TOWN OF LISBON

13

POST-AGREEMENT BOUNDARY
PRE-AGREEMENT BOUNDARY
PARCELS IN AGREEMENT LIMITS



0 100 200
SCALE

REDUCED 1/2
REVISED 5/19/2022

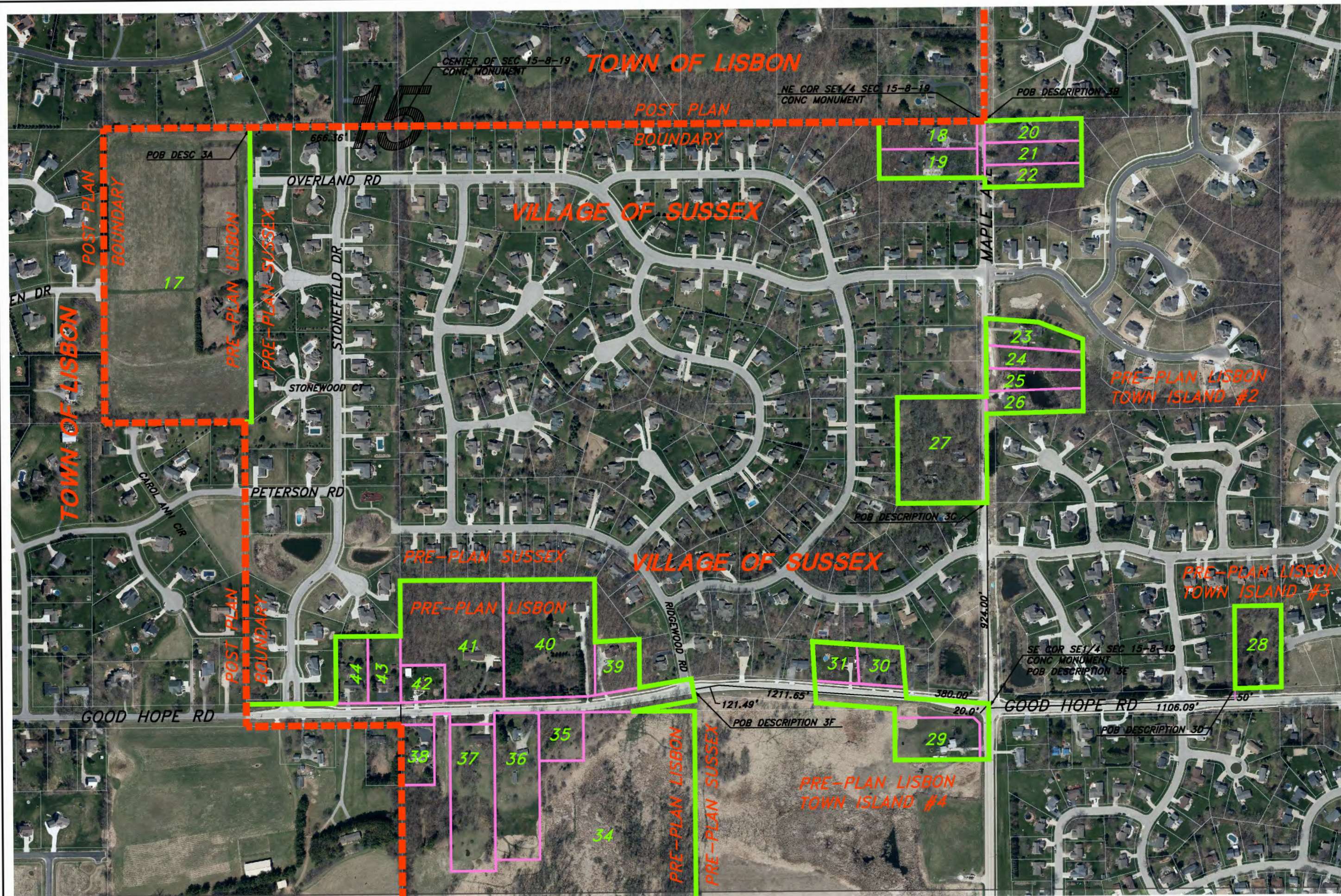
SCALE : 1" = 200'

PROJECT : #1717.1285
DATE : 5/3/22
DRAWN BY : BAO
APPROVED BY : BAO

VILLAGE OF SUSSEX / TOWN OF LISBON
2022 BOUNDARY
AGREEMENT ATTACHMENT
MAP TWO



SHEET 2 OF 10



POST-AGREEMENT BOUNDARY
 PRE-AGREEMENT BOUNDARY
 PARCELS IN AGREEMENT LIMITS

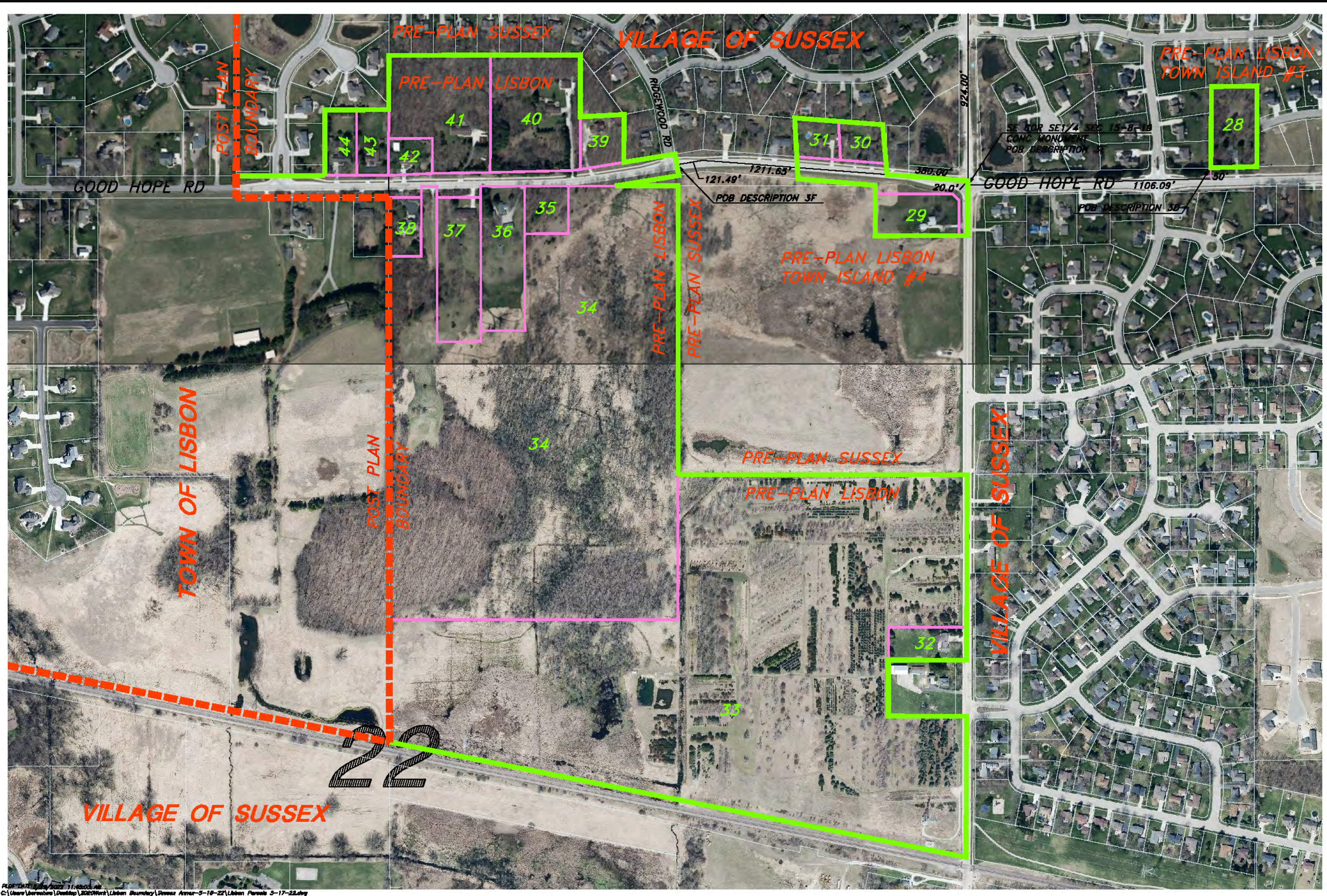
0 100 200
 SCALE
REDUCED 1/2
 REVISED 5/19/2022
 SCALE : 1" = 200'

PROJECT : #A17.1025	DRAWN BY : BAO
DATE : 5/5/22	APPROVED BY : BAO

VILLAGE OF SUSSEX / TOWN OF LISBON
 2022 BOUNDARY
 AGREEMENT ATTACHMENT
 MAP THREE


KUNKEL
 engineering
 group
 107 Parallel Street
 Beaver Dam, WI 53916
 (920)356-9447
 Fax (920)356-9454

PLOT DATE: 5/19/2022 11:56:20 AM
 C:\Users\jcornejo\Desktop\2022Work\Lisbon Boundary\Sussex Annex-5-16-22\Lisbon Parcels 5-17-22.dwg



--- POST-AGREEMENT BOUNDARY
--- PRE-AGREEMENT BOUNDARY
--- PARCELS IN AGREEMENT LIMITS

0 100 200
 SCALE
REDUCED 1/2
 REVISED 5/18/2022
 SCALE: 1" = 300'

PROJECT: #1017.1085	DATE: 5/19/22	DRAWN BY: BAO	APPROVED BY: BAO
---------------------	---------------	---------------	------------------

VILLAGE OF SUSSEX / TOWN OF LISBON
 2022 BOUNDARY
 AGREEMENT ATTACHMENT
 MAP FOUR

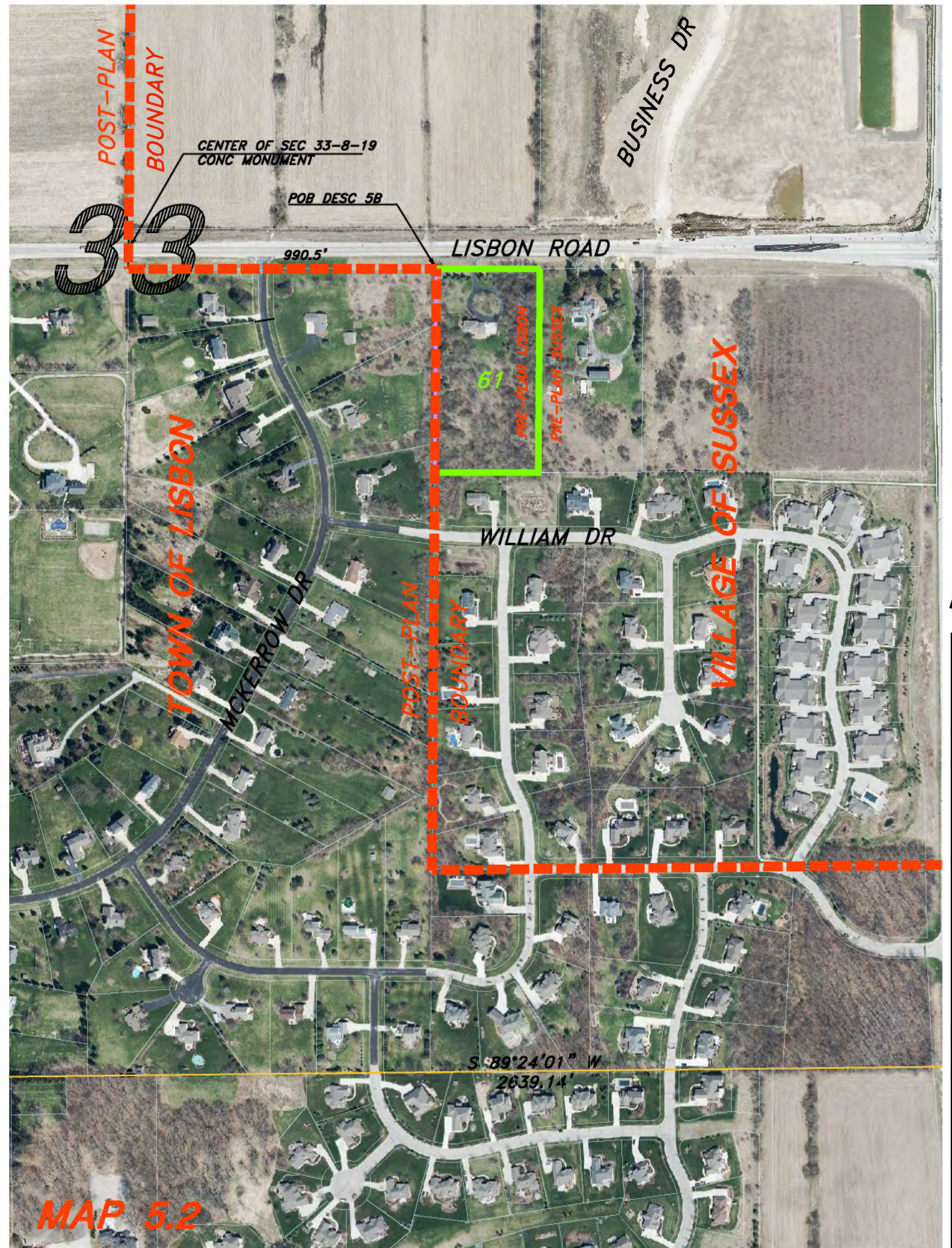
KUNKEL
 engineering
 group
 107 Parallel Street
 Beaver Dam WI 53016
 (920)358-8447
 Fax (920)358-8484

P:\017\1085\2022\11-22-22.dwg
 C:\Users\baobao\Desktop\2022\Work\Lisbon Boundary\Sussex Annex 5-18-22\Lisbon Parcels 5-17-22.dwg



MAP 5.1

PLOT DATE: 5/18/2022 11:46:01 AM
 G:\Users\barahwa\Desktop\2020\work\Lisbon Boundary\Sussex Annex-5-18-22\Lisbon Parcels 5-17-22.dwg



MAP 5.2

- - - POST-AGREEMENT BOUNDARY
- PRE-AGREEMENT BOUNDARY
- PARCELS IN AGREEMENT LIMITS

0 100 200
 SCALE
REDUCED 1/2
 REVISED 5/18/2022

SCALE : 1" = 200'

PROJECT : # R17.1025	DATE : 5/9/22	DRAWN BY : BAO
APPROVED BY : BAO		

VILLAGE OF SUSSEX / TOWN OF LISBON
 2022 BOUNDARY
 AGREEMENT ATTACHMENT
 MAPS 5.1 & 5.2

KUNKEL
 engineering
 group
 107 Parallel Street
 Beaver Dam, WI 53016
 (920)356-8447
 Fax (920)356-8454



- POST-AGREEMENT BOUNDARY
- PRE-AGREEMENT BOUNDARY
- PARCELS IN AGREEMENT LIMITS

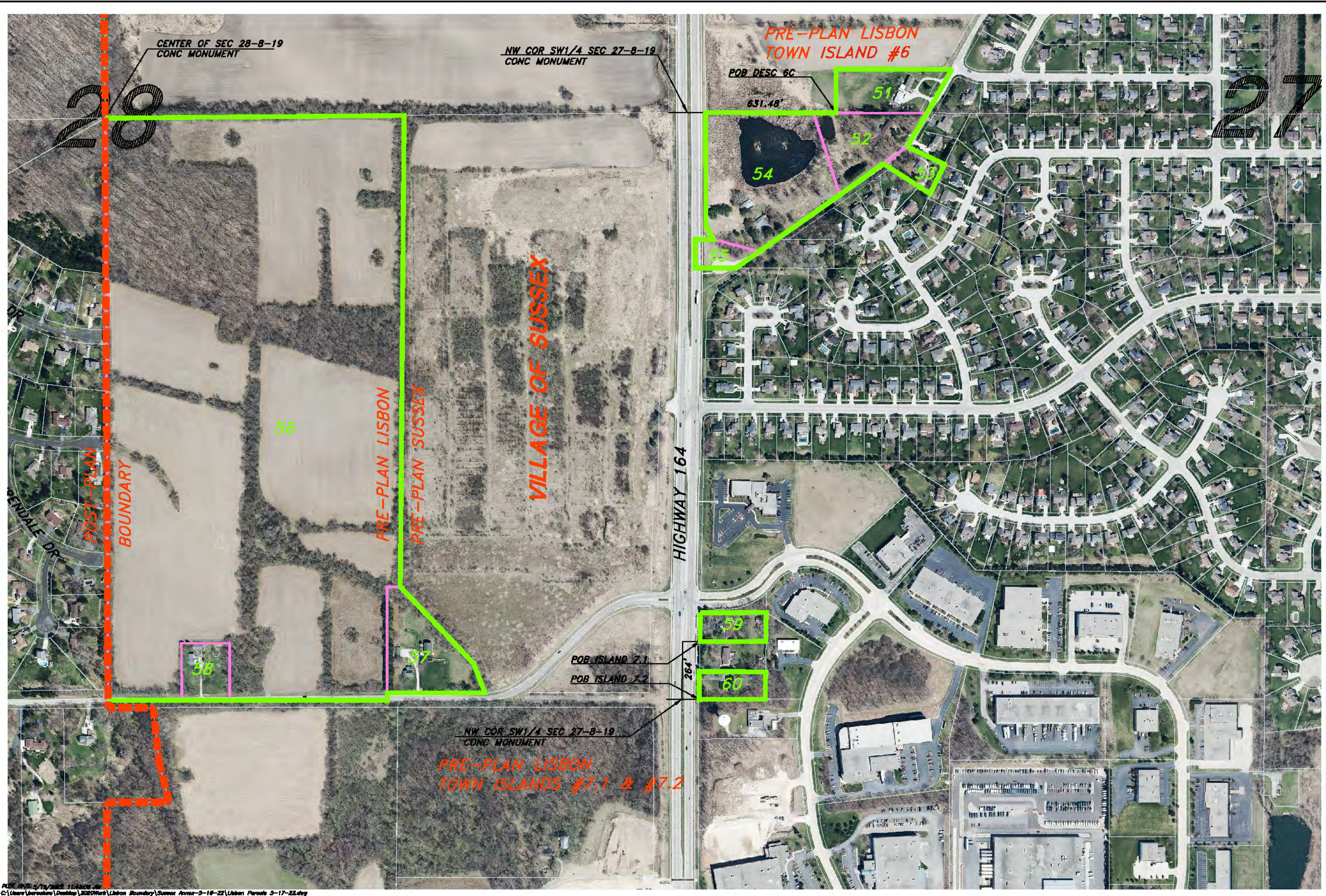
0 100 200
SCALE
REDUCED 1/2
REVISED 5/19/2022
SCALE : 1" = 200'

PROJECT : #1017.1285
DATE : 5/3/22
DRAWN BY : BAO
APPROVED BY : BAO

VILLAGE OF SUSSEX / TOWN OF LISBON
2022 2022 BOUNDARY
AGREEMENT ATTACHMENT
MAP SIX

KUNKEL
engineering
group
107 Parallel Street
Beaver Dam, WI 53016
(920)358-8447
Fax (920)358-8454

Plot Date: 5/19/2022 11:47:23 AM
C:\Users\kunkel\OneDrive\Documents\GIS\Work\Lisbon Boundary\Sussex Annex-5-18-22\Lisbon Parcels 5-17-22.dwg



POST-AGREEMENT BOUNDARY
 PRE-AGREEMENT BOUNDARY
 PARCELS IN AGREEMENT LIMITS

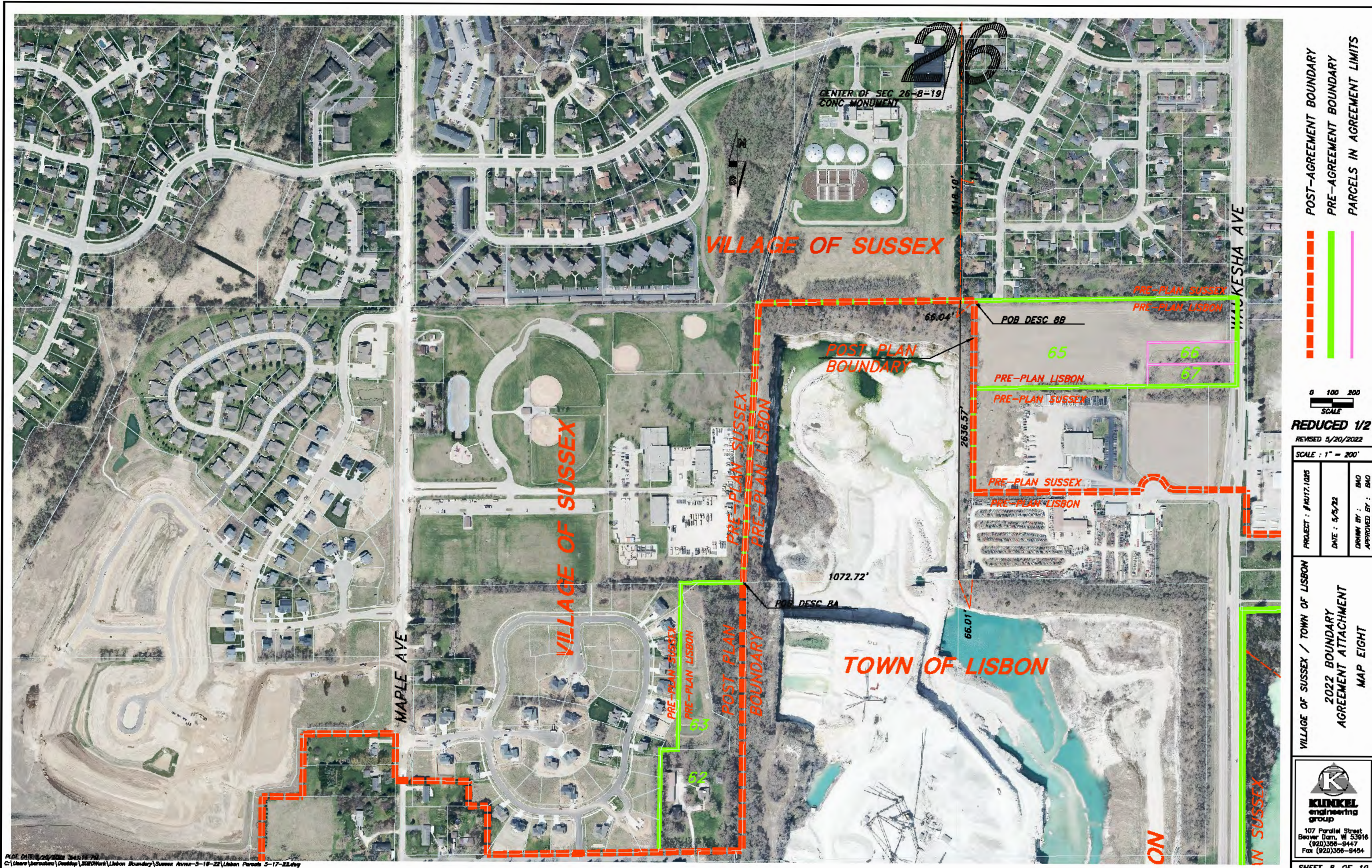
0 100 200
 SCALE
REDUCED 1/2
 REVISED 5/19/2022
 SCALE : 1" = 200'

PROJECT : #1717.1285
 DATE : 5/19/22
 DRAWN BY : BAO
 APPROVED BY : BAO

VILLAGE OF SUSSEX / TOWN OF LISBON
 2022 BOUNDARY
 AGREEMENT ATTACHMENT
 MAP SEVEN


KUNKEL
 engineering
 group
 107 Parallel Street
 Beaver Dam, WI 53016
 (920)358-8447
 Fax (920)358-8454

P:\GIS\2022\17171285.dwg
 C:\Users\baorshere\Desktop\2022\Work\17171285\17171285_Boundary\Sussex Annex-5-18-22\17171285_Parcel 5-17-22.dwg



DATE: 5/20/2022
 C:\Users\lbraccio\OneDrive\Work\Lisbon Boundary\Sussex Annex-5-18-22\Urban Parcels 5-17-22.dwg

POST-AGREEMENT BOUNDARY
 PRE-AGREEMENT BOUNDARY
 PARCELS IN AGREEMENT LIMITS

0 100 200
 SCALE
 REDUCED 1/2
 REVISED 5/20/2022

SCALE: 1" = 200'
 PROJECT: #1717.1025
 DATE: 5/5/22
 DRAWN BY: BAO
 APPROVED BY:

VILLAGE OF SUSSEX / TOWN OF LISBON
 2022 BOUNDARY
 AGREEMENT ATTACHMENT
 MAP EIGHT


KINKEL
 engineering
 group
 107 Parallel Street
 Beaver Dam, WI 53016
 (920)356-8447
 Fax (920)356-8454

Description 1A

Map Key	PIN
1	LSBT0201998001
2	LSBT0201998002

Commencing at the NW Corner NE1/4, Section 15, T8N, R19E, then south, along the west line of the NE1/4 of said Section 15, a distance of 50.0 feet, to a point in the south line of Plainview Road and point of beginning;

- from said point of beginning, then south, along the west line of the NE1/4 of said Section 15, to the SW corner of the NW1/4, NE1/4 of said Section 15;
- then east, along the north line of Hidden Oaks, being the south line of the NW1/4, NE1/4 of said Section 15, to the SE corner of NW1/4, NE1/4 of said Section 15;
- then north, along the east line NW1/4, NE1/4 of said Section 15, to a point in the south line of Plainview road;
- Then west, along the south line of Plainview Road, to a point in west line of the NE1/4 of said Section 15, and point of beginning.

Description 1B

Map Key	PIN
3	LSBT0201999002
4	LSBT0198995
5	LSBT0198996
6	LSBT0198998
7	LSBT0198999

Commencing at the NE Corner NW1/4, Section 14, T8N, R19E, then south, along the west line of the NW1/4 of said Section 14, a distance of 50.0 feet, to a point in the south line of Plainview Road and point of beginning;

- from said point of beginning, then south, along the east line NW1/4, of said Section 14, to the SE corner NE1/4, NW1/4 of said Section 14, said point being the NE corner of Majestic Heights.
- then west, along the north line of Majestic Heights, to the SW corner of NW1/4, NW1/4 of said Section 14;
- then west, along the south line NE1/4, NE1/4 Section 15, T8N, R19E, to the SW corner of CSM 4739;
- then north, along the west line of CSM 4739, a distance of 168.51' to the NW corner of CSM 4739;

66.0307 Boundary Agreement – Territory Transfer – From T/Lisbon to V/Sussex

- then east, along the north line of CSM 4739, to a point in the west line NW1/4, NW1/4 of said Section 14;
- then north, along the NW1/4, NW1/4 of said Section 14, to a point in the south line of Plainview Road;
- then east, along the south line of Plainview Road, to a point in the east line of NW1/4 of said Section 14 and point of beginning.

Description 1C - Preplan Lisbon Town Island #1

Map Key	PIN
15	LSBT0198997001
16	LSBT0199999001

Commencing at the SE corner NW1/4 Section 14, T8N, R19E; then west, along the south line of NW1/4 of said Section 14, to a point in the west line of Woodside Road and point of beginning;

- from said point of beginning, then south, along the west line of Woodside Road, to a point in the south line of CSM 862;
- then west, along the south line of CSM 862, to the SW corner of CSM 862;
- then north, along the west line of CSM 862, to the NW corner of CSM 862, being a point in the south line of NW1/4 of said Section 14;
- then east, along the south line of NW1/4 of Said Section 14, to the SW corner of CSM 5839;
- then north, along the west line of CSM 5839, to the NW corner of CSM 5839;
- then east, along the north line of CSM 5839, to a point in the west line of Woodside Road;
- then south, along the west line of Woodside Road, to a point in the south line NW1/4 of said Section 14, and point of beginning.

Description 2A

Map Key	PIN
8	LSBT0197998
9	LSBT0194992
10	LSBT0194993
11	LSBT0194994
12	LSBT0194996
13	LSBT0194995

Commencing at the NW Corner NW1/4, Section 13, T8N, R19E, then south, along the west line of the NW1/4 of said Section 13, a distance of 50.0 feet, to a point in the south line of Plainview Road and point of beginning;

66.0307 Boundary Agreement – Territory Transfer – From T/Lisbon to V/Sussex

- from said point of beginning, then west, a distance of 110 feet along the south line of Plainview Road to a point in the east line of Coldwater Creek Phase 4;
- then south, along the east line Coldwater Creek Phase 4, a distance of 346 feet to a point;
- then east, along the north line of Lot 158 Coldwater Creek Phase 4, a distance of 110 feet to a point in the west line of the NW1/4 of said Section 13;
- then south, along the west line of the NW1/4 of said Section 13, a distance of 409.97 feet to the NW corner of Lot 163 Coldwater Creek Phase 4 ;
- then east, along the north lines of Lots 163, 164, 165, 166, 167, and 168 Coldwater Creek Phase 4, to a point;
- then north, along the west line of Outlot 16 Coldwater Creek Phase 4, to a point in the south line of Plainview Road;
- then west, along the south line of Plainview Road, a distance of 590.5 feet to the point of beginning;

Description 2B

Map Key	PIN	
14	LSBT0194998	

Commencing at the NE Corner NW1/4, Section 13, T8N, R19E, then south, along the east line of the NW1/4 of said Section 13, a distance of 50.0 feet, to a point in the south line of Plainview Road; then west, along the north line of Plainview Road, a distance of 229.54 feet to the point of beginning;

- from said point of beginning, then S01°12'58"E, a distance of 223.00 feet to a point;
- then S88°47'02"W, a distance of 80.00 feet, to a point;
- then N01°12'58"W, a distance of 223.00 feet, to a point in the south line of Plainview Road;
- then N88°47'02"E, a distance of 80.00 feet, to the point of beginning.

Description 3A

Map Key	PIN	
17	LSBT0203993	

Commencing at the NE corner SW1/4 Section 15, T8N, R19E; then west, along the north line of the SW1/4 said Section 15, a distance of 666.36 feet to the point of beginning;

- from said point of beginning, then south, along the west line, a distance of 1321.21 feet to the SW corner of Lot 36 Stonewood Estates of Sussex;
- then west, along the north line of Lot 37 Stonewood Estates of Sussex and the north line of Western Oaks, a distance of 659.50 feet to the SW corner NE1/4 SW1/4 of said Section 15;

- then north, along the west line of NE1/4 SW1/4 of said Section 15, a distance of 1321.25 to a point in the north line of SW1/4 of said Section 15;
- then east, along the north line of SW1/4 of said Section 15, a distance of 659.50 feet to the point of beginning.

Description 3B

Map Key	PIN
18	LSBT0204999002
19	LSBT0204999003
20	LSBT0199997
21	LSBT0199996
22	LSBT0199995

Beginning at the NW corner SW1/4 of Section 14, T8N, R19E;

- then east, along the north line of SW1/4 of said Section 14, a distance of 436.0 feet to a point;
- then S00°01'47"W, a distance of 300.0 feet to a point;
- then S89°00'14"W, a distance of 436.0 feet to a point in the east line SE1/4 of Section 15, T8N, R19E;
- then north, along the east line SE1/4 of said Section 15, a distance of 45.06 feet to a point;
- then west, a distance of 33.00 feet to a point in the west line of Maple Avenue and SE corner of Lot 2 CSM 7280;
- then west, along the south line of Lot 2 CSM 7280, a distance of 442.00 feet to the SW Corner of Lot 2 CSM 7280;
- then north, along the west line of CSM 7280, a distance of 255.0 feet to a point in the north line SE1/4 of said Section 15;
- then east, along the north line SE1/4 of said Section 15, a distance of 475.0 feet to the point of beginning.

Description 3C Preplan Lisbon Town Island #2

Map Key	PIN
23	LSBT0199994
24	LSBT0199993
25	LSBT0199992
26	LSBT0199991
27	LSBT0204998004

Commencing at the SE corner SE1/4 Section 15, T8N, R19E; then north along the east line of SE1/4 of said Section 15, a distance of 924.00 feet to the point of beginning;

66.0307 Boundary Agreement – Territory Transfer – From T/Lisbon to V/Sussex

- from said point of beginning, then S89°52'52"W, a distance of 400.00 feet to the SW corner of CSM 4196;
- then N00°01'34"E, a distance of 475.00 feet to the NW corner of CSM 4196;
- then N89°52'52"E, along the north line of CSM 4196, a distance of 400.00 feet to a point in the east line of SE1/4 of said Section 15;
- then north, to a point in a westerly projection of the south line of Outlot 1 Hidden Hills;
- then S86°38'13"E, along the southerly line of said Outlot 1 and its westerly projection, a distance of 237 feet to a point;
- then S67°32'13"E, along the southerly line of said Outlot 1, a distance of 213.84 feet to a point;
- then southerly, along the easterly line of said Outlot 1, a distance of 320.17 feet to a point in the north line of Outlot 2 Hidden Hills;
- then S88°30'47"W, along the north line of said Outlot 2 and its westerly projection, a distance of 435.49 feet to a point in the east line SE1/4 of said Section 15;
- then south, along the east line of SE1/4 of said Section 15, a distance of 396.83 feet to the point of beginning.

Description 3D Preplan Lisbon Town Island #3

Map Key	PIN
28	LSBT0199989

Commencing at the SW corner of the SW1/4 of Section 14, T8N, R19E; then east, along the south line of the SW1/4 of said Section 14, a distance of 1106.09 feet to a point; then north, 50.0 feet to a point in the north line of Good Hope Road and point of beginning;

- from said point of beginning, then north along the west line of CSM 382 and its northerly projection, a distance of 367.42 feet to a point;
- then east, along a line parallel with and 208.71 feet northerly of the north line of CSM 382, a distance of 208.71 feet to a point;
- then south, a distance of 367.42 feet to a point in the north line of Good Hope Road and the SE corner of CSM 382;
- then west, along the north line of Good Hope Road, a distance of 208.71 feet to the point of beginning.

Description 3E Preplan Lisbon Town Island #4

Map Key	PIN
29	LSBT0229992
30	LSBT020499
31	LSBT0204993

Beginning at the SE corner of SE1/4 of Section 15, T8N, R19E;

- then north, along the east line of the SE1/4 of said Section 15, a distance of 20.0 feet to a point;
- then N85°37'28"W, a distance of 380 feet to to a point;
- then N02°15'28"W, a distance of 226.58 feet to a point in the south line of Block 5 Centennial Oaks;
- then N85°37'28"W, along the south line of said Block 5, a distance of 403.27 feet to a point;
- then S02°15'28"E, a distance of 269.20 to a point in the south line of Good Hope Road;
- then SE, along the south line of Good Hope Road to the NW corner of CSM 8335;
- then S00°09'14"W, along the west line of CSM 8335 to the SW corner of said CSM;
- then N89°52'52"E, along the south line of CSM 8335 and its easterly projection, a distance of 422.36 feet to a point in the east line of NE1/4 Section 22, , T8N, R19E;
- then north, along the east line of NE1/4 of said Section 22, a distance of 230.00 feet to the point of beginning.

Description 3F

Map Key	PIN	Map Key	PIN
32	LSBT0229996001	39	LSBT0204998005
33	LSBT0229996	40	LSBT0204998003
34	LSBT0229998	41	LSBT0204998002
35	LSBT0229997	42	LSBT0204997
36	LSBT0229995	43	LSBT0203999002
37	LSBT0229998001	44	LSBT0203999003
38	LSBT0229998002		

Commencing at the SE corner of SE1/4 of Section 15, T8N, R19E; then north, along the east line of the SE1/4 of said Section 15, a distance of 20.0 feet to a point in the centerline of Good Hope Road; then N85°37'28"W along the centerline of Good Hope Road, a distance of 1211.65 feet to a point; then S80°43'22"W along the centerline of Good Hope Road, a distance of 121.49 feet, to a point in the southerly projection of the east line of Ridgewood Road and point of beginning;

- from said point of beginning, then northerly, along a southerly projection of the east line of Ridgewood Road, a distance of 50.0 feet to a point in the north line of Good Hope Road;
- then SW, along the north line of Good Hope Road to the SE corner of CSM 6101;
- then north, along the east line of CSM 6101, to the NE corner of CSM 6101;
- then west, along the north line of CSM 6101 to the NW corner of CSM 6101 and point in the east line of Lot 2 CSM 4195;
- then north, along the east line Lot 2 CSM 4195, a distance of 282.80 feet to the NE corner Lot 2 CSM 4195;

66.0307 Boundary Agreement – Territory Transfer – From T/Lisbon to V/Sussex

- then west along the north line of CSM 4195, to the NW corner of Lot 2 CSM 4195 and point in the west line of the SE1/4 of said Section 15;
- then south, along the west line of the SE1/4 of said Section 15, to the SE corner of Lot 11 Stonewood Estates of Sussex;
- then S89°50'00"W, along the southerly line of Stonewood Estates of Sussex, a distance of 292.41 feet to a point;
- then S00°10'00"E, along the easterly line of Stonewood Estates of Sussex, a distance of 300.00 feet to a point in the north line of Good Hope Road;
- then west, along the north line of Good Hope Road, a distance of 405.92 feet to a point;
- then south, along a southerly projection of the Stonewood Estates of Sussex, a distance of 100.0 feet to a point in the south line of Good Hope Road;
- then east, along the south line of Good Hope Road, to a point in the west line of the NE1/4 of Section 22, T8N, R19E;
- then south, along the west line of the NE1/4 of said Section 22, to a point in the north line of the Union Pacific Railroad;
- then SE, along the north line of the Union Pacific Railroad, to a point in the east line of the SE1/4 of said Section 22;
- then north, along the east line of the SE1/4 of Section 22, to the SE corner of the NE1/4 of said Section 22;
- then north, along the east line of the NE1/4 of Section 22 to a point in the south line of CSM 1191;
- then west, along the south line of CSM 1191 to the SW corner of CSM 1191;
- then north, along the west line of CSM 1191, a distance of 256.0 feet to the NW corner of CSM 1191;
- then east, along the north line of CSM 1191, to a point in the east line of NE1/4 of said Section 22;
- then north, along the east line of the NE1/4 of said Section 22, to the SE corner of the NE1/4, NE1/4 of said Section 22;
- then west, along the south line of the NE1/4, NE1/4 of said Section 22 to the SW corner of NE1/4, NE1/4 of said Section 22;
- then north, along the west line of NE1/4, NE1/4 of said Section 22, to the NE corner of NW1/4, NE1/4 of said Section 22;
- then east, along the north line of NW1/4, NE1/4 of said Section 22, to a point in the south line of Good Hope Road;
- then NE, along the south line of Good Hope Road to a point in the southerly projection of the east line of Ridgewood Road;
- then NW, along the southerly projection of the east line of Ridgewood Road, a distance of 50.0 feet to a point in the centerline of Good Hope Road and point of beginning;

Description 5A

Map Key	PIN
45	LSBT0225998004
46	LSBT0225997

Commencing at the SW corner of NE1/4 of Section 21, T8N, R19E, then north, along the west line of the NE1/4 of said Section 21, a distance of 63 feet to a point in the north line of Silver Spring Drive and point of beginning;

- from said point of beginning, then SE, along the north line of Silver Spring Drive to a point in the west line of CSM 10938;
- then north, along the west line of CSM 10938, to a point in the south line of Waukesha County Bugline Recreational Trail;
- then NW, a distance of 800 feet along the south line of said Bugline Trail to a point;
- then NE, with a deflection angle to the right of 90°00', to a point in the north line of the Union Pacific Railroad;
- then NW, along the north line of the Union Pacific Railroad, to a point in the west line NE1/4 of said Section 21;
- then south, along the west line of NE1/4 of said Section 21 to a point in the north line of Silver Spring Road and point of beginning;

Description 6A

Map Key	PIN
47	LSBT0253998

Commencing at the SW corner of NE1/4 of Section 28, T8N, R19E; then north, along the west line NE1/4 of said Section 28 to the SW corner of N1/2, NE1/4 of said Section 28 and point of beginning;

- from said point of beginning, then east, along the south line of N1/2, NE1/4 of said Section 28, to a point in the west line of Highway 164;
- then north, along the west line of Highway 164, to a point in the north line S1/2, N1/2, NE1/4 of said Section 28;
- then west, along the north line of S1/2, N1/2, NE1/4 of said Section 28, to a point in the west line NE1/4 of said Section 28;
- then south, along the west line of NE1/4 of said Section 28, to the SW corner of N1/2, NE1/4 of said Section 28 and point of beginning;

Description 6B Preplan Lisbon Town Island #5

Map Key	PIN
48	LSBT0250998
49	LSBT0250997
50	LSBT0250999

Commencing at the NE corner NW1/4 of Section 27, T8N, R19E; then south along the east line of NW1/4 of said Section 27, a distance of 57 feet to a point in the south line of Main Street and point of beginning;

- from said point of beginning, then south along the east line of NW1/4 of said Section 27, a distance of 208.75 feet to a point;
- then west, along a line parallel with and 208.75 feet southerly of the south line of Main Street, to a point the east line of Pewaukee Road;
- then north, and NE along the east line of Pewaukee Road, to a point in the south line of Main Street;
- then east, along the south line of Main Street, to a point in the east line NW1/4 of said Section 27 and point of beginning.

Description 6C Preplan Lisbon Town Island #6

Map Key	PIN
51	LSBT0250993
52	LSBT0251997
53	LSBT0251998
54	LSBT0251996
55	LSBT0251995

Commencing at the NW corner SW1/4 of Section 27, T8N, R19E; then east along the north line of the SW1/4 of said Section 27, a distance of 631.48 feet to the SW corner of CSM 1832 and point of beginning;

- from said point of beginning, then N00°26'E, a distance of 200.35 feet to the NW corner of CSM 1832;
- then S89°34'E, along the north line of CSM 1832, a distance of 529.21 feet to a point in the centerline of Pewaukee Road;
- then S29°51'W, along the centerline of Pewaukee Road, a distance of 230.00 feet, to a point in the north line SW1/4 of said Section 27;
- then S30°40'W, along the centerline of Pewaukee Road, a distance of 176.70 feet to a point;
- then S64°26'E, a distance of 187.40 feet to a point;

66.0307 Boundary Agreement – Territory Transfer – From T/Lisbon to V/Sussex

- then S25°04'W, a distance of 149.65 feet to a point;
- then N56°58'W, a distance of 249.94 feet to a point in the centerline of Pewaukee Road;
- then SW, along the centerline of Pewaukee Road, to a point in the westerly projection of the north line of Eagles Ridge Southwest;
- then west, along the westerly projection of the north line of Eagles Ridge Southwest to a point in the west line SW1/4 of said Section 27;
- then north, along the west line SW1/4 of said Section 27, a distance of 130 feet to a point;
- then east, to a point in the east line of Highway 164, said point being located 318 feet NW of the centerline of Pewaukee Road;
- then north, along the east line of Highway 164 to a point in the north line SW1/4 of said Section 27;
- then east, along the north line SW1/4 of said Section 27 to the point of beginning.

Description 7A

Map Key	PIN
56	LSBT0256996
57	LSBT0256994
58	LSBT0256995

Beginning at the NW corner SE1/4 Section 28, T8N, R19E;

- then east, along the north line SE1/4 of said Section 28, a distance of 1361.76 feet to the NW corner of Lot 2 CSM 10012;
- then south, along the west line of Lot 2 CSM 10012, a distance of 2153.89 feet to a point in the north line of CSM 1132;
- then S43°49'30"E, along the easterly line of CSM 1132, a distance of 483.10 feet to a point;
- then S20°44'30"E, along the easterly line of CSM 1132, a distance of 143.05 feet to a point in the north line of Richmond Road;
- then west, along the south line of Richmond Road, to the SW corner of CSM 1132;
- then south, along a southerly projection of the west line of CSM 1132, a distance of 33 feet to a point in the center line of Richmond Road;
- then west, along the centerline of Richmond Road and south line SE1/4 of said Section 28, to the SW corner of SE1/4 of said Section 28;
- then north, along the west line of SE1/4 of said Section 28, to the point of beginning.

Description 7B Preplan Lisbon Town Islands #7.1 and #7.2

Map Key	PIN	
59	LSBT0251993	Island #7.1
60	LSBT0251991	Island #7.2

Preplan Island #7.1

Commencing at the SW corner of SW1/4 of Section 27, T8N, R19E; then north, along the west line of SW1/4 of said Section 27, a distance of 264 feet to a point; then east, along a line parallel with the south line of SW1/4 of said Section 27, to a point in the east line of Highway 164, and point of beginning;

- from said point of beginning , then east along a line parallel with the south line of SW1/4 of said Section 27, to a point 354.75 feet east of the west line of said SW1/4 Section;
- then north, along a line parallel with the west line of said SW1/4 Section, a distance of 132.00 feet to a point;
- then west, along a line parallel with the south line of said SW1/4 Section to the east line of Highway 164;
- then south, along the east line of Highway 164, a distance of 132.00 feet to the point of beginning.

Preplan Island #7.2

Commencing at the SW corner of SW1/4 of Section 27, T8N, R19E; then east, along the south line of SW1/4 of said Section 27, to a point in the east line of Highway 164, and point of beginning;

- from said point of beginning , then east along the south line of SW1/4 of said Section 27, to a point 354.75 feet east of the SW corner of said SW1/4 Section;
- then north, along a line parallel with the west line of said SW1/4 Section, a distance of 132.00 feet to a point;
- then west, along a line parallel with and 132 feet north of the south line of said SW1/4 Section to the east line of Highway 164;
- then south, along the east line of Highway 164, a distance of 132.00 feet to the point of beginning.

Description 5B

Map Key	PIN
61	LSBT0276997

Commencing at the NW corner SE1/4 of Section 33, T8N, R19E; then south, along the west line of SE1/4 of said Section 33, a distance of 65 feet to a point in the south line of Lisbon Road; then east along the south line of Lisbon Road, a distance of 990.5 feet to the NE corner of CSM 7539 and point of beginning;

- from said point of beginning, then south, along the west line of CSM 7539 and its southerly projection, a distance of 655.12 feet to a point in the north line of Seven Stones of Sussex Addition No 1;

66.0307 Boundary Agreement – Territory Transfer – From T/Lisbon to V/Sussex

- then east, along the north line of Seven Stones of Sussex and Addition No 1, a distance of 332.50 feet to a point;
- then north, along a line parallel with the east line of CSM 7539, a distance of 655.12 feet to a point in the south line of Lisbon Road;
- then west, along the south line of Lisbon Road, a distance of 332.5 feet to the NE corner of CSM 7539 and point of beginning.

Description 8A

Map Key	PIN
62	LSBT0282979001
63	LSBT0282979002

Commencing at the NE corner SW1/4 or center of Section 26, T8N, R19E; then south, along the east line of SW1/4 of said Section 26, said line being parallel and 11 feet west of the west line of Spring Green Heights Addition #1, a distance of 2636.57 feet to the SE corner of said Section 26; then west, along the south line of SW1/4 of said Section 26, a distance of 1072.72 feet to the NE corner of CSM 11454 and point of beginning;

- from said point of beginning, then south, along the east line of CSM 11454, to the SE corner of CSM 1154;
- then S89°05'45"W, along the south line of CSM 11454, a distance of 392.99 feet to a point;
- then N00°20'45"E, a distance of 8 feet to a point;
- then S89°05'45"W, along the south line of CSM 11454 being parallel with and 33 north of the centerline of Northview Drive, a distance of 198.58 feet to a point in the east line of Johanssen Farms being 8 feet northerly of the SE corner of Lot 16;
- then north, along the west line of CSM 11454, a distance of 476.40 feet to a point;
- then N89°07'02"E, a distance of 81.64 feet to a point;
- then north, along the west line of CSM 11454 to a point in the south line of SW1/4 of said Section 26;
- then east, along the south line of SW1/4 of said Section 26 to the NE corner of CSM 11454 and point of beginning;

Description 8B

Map Key	PIN
65	LSBT0248983005
66	LSBT0248981
67	LSBT0248980

66.0307 Boundary Agreement – Territory Transfer – From T/Lisbon to V/Sussex

Commencing at the NE corner SW1/4 or center of Section 26, T8N, R19E; then south, along the east line of SW1/4 of said Section 26, said line being parallel and 11 feet west of the west line of Spring Green Heights Addition #1, a distance of 1318.10 feet to the NE corner SE1/4, SW1/4, said Section 26; then east, along the north line of the SW1/4, SE1/4 of said Section 26, a distance of 66.04 feet to the NW corner of CSM 6863 and point of beginning;

- from said point of beginning, then east along the north line of Parcel 3 CSM 6863 and its easterly projection, a distance of 1244.72 feet to a point in the east line of SW1/4 SE1/4 of said Section 26;
- then south, along the east line of SW1/4 SE1/4 of said Section 26, a distance of 416.93 feet to a point;
- then west, along the south line of Parcel 3 CSM 6863 and its easterly projection, a distance of 1244.44 feet to the SW corner of Parcel 3 CSM 6863;
- then north along the west line of Parcel 3 CSM 6863, a distance of 416.93 feet to the point of beginning.



N64W23760 Main Street
Sussex, Wisconsin 53089
Phone (262) 246-5200
FAX (262) 246-5222
Email: jmoore@villagesussex.org
Website: www.villagesussex.org

May 26, 2022

Via Email Only: mds@wi.gov

Wisconsin Department of Administration
Municipal Boundary Review
P.O. Box 1645
Madison, WI 53701-1645

RE: Village of Sussex Attachment

To Whom It May Concern:

Please find enclosed a certified copy of Ordinance Number 883 entitled "An Ordinance to Detach and Attach Territory by and between the Town of Lisbon to the Village of Sussex in Accordance with Section 66.0307 of the Wisconsin Statutes" which was adopted by the Village Board of the Village of Sussex on May 24, 2022, certificate, and map of property.

The annexed property has a population of one hundred thirty-three (133), approximate acreage 512.2. This attachment shall be effective as of May 26, 2022.

I have also enclosed a certified copy of Ordinance 2022-07 entitled "An Ordinance to Detach Territory by the Town of Lisbon to the Village of Sussex in Accordance with Section 66.0307 of the Wisconsin Statutes" which was adopted by the Town of Lisbon on May 23, 2022.

Should you have any questions, please feel free to contact me.

Sincerely,

Jennifer Moore
Village Clerk

Enclosures

cc: Elisa M. Cappozzo, Town of Lisbon Clerk (via email)
Susan Moll, Hamilton School District (via email)
Sue Williams, Richmond School District (via email)
Kate McGraw, Arrowhead School District (via email)
Capt. Lisa Panas, Waukesha County Sheriff's Department (via email)
Chief Kristopher Grod, Sussex Fire Department (via email)
Judith Neu, Director of Public Works (via email)
Sr. Planner Sandy Scherer, Waukesha County Land Use and Planning (via email)
Meg Wartman, Waukesha County Clerk (via email)
Wisconsin Elections Commission (via email)
AT&T (via U.S. Mail)
Charter Communications (via U.S. Mail)
WE Energies (via U.S. Mail)



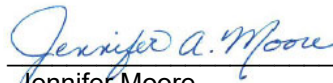
N64W23760 Main Street
Sussex, Wisconsin 53089
Phone (262) 246-5200
FAX (262) 246-5222
Email: info@villagesussex.org
Website: www.villagesussex.org

CERTIFICATION

STATE OF WISCONSIN)
)SS.
COUNTY OF WAUKESHA)

I, Jennifer Moore, Municipal Clerk of the Village of Sussex, being first duly sworn on oath depose and say that Ordinance 883 entitled "An Ordinance to Detach and Attach Territory by and between the Town of Lisbon to the Village of Sussex in Accordance with Section 66.0307 of the Wisconsin Statutes", adopted by the Village Board on May 24, 2022, as attached is a true and correct copy.

I further certify that the territory described in the attached ordinance is approximately 512.2 acres and has a population of one hundred thirty-three (133).



Jennifer Moore
Clerk/Treasurer

STATE OF WISCONSIN

VILLAGE OF SUSSEX

WAUKESHA COUNTY

ORDINANCE NO. 883

**AN ORDINANCE TO DETACH AND ATTACH TERRITORY BY AND BETWEEN
THE TOWN OF LISBON TO THE VILLAGE OF SUSSEX IN ACCORDANCE WITH
SECTION 66.0307 OF THE WISCONSIN STATUTES**

WHEREAS, the Village of Sussex (“Sussex”) and the Town of Lisbon (“Lisbon”) have entered a Cooperative Boundary Plan Agreement (“CBP”) under Wisconsin statute §66.0307; and,

WHEREAS, the CBP provided for boundary changes between the municipalities as authorized by law; and

WHEREAS, §66.0307 provides that a boundary change under a cooperative plan shall be accomplished by the enactment of an ordinance by the governing body designated to do so in the plan; and

WHEREAS, boundary changes provided for in the plan will result in parcels being transferred from Lisbon to Sussex and from Sussex to Lisbon.

NOW, THEREFORE, BE IT HEREBY ORDAINED that the Village of Sussex detaches the parcels more particularly described on Exhibit A attached hereto and incorporated herein by reference to the Town of Lisbon and agrees to the attachment of the parcels more particularly described on Exhibit B attached hereto and incorporated herein by reference from the Town of Lisbon, effective immediately.

FURTHER the Village Clerk is directed to comply with the notice and filing requirements under Wisconsin statute §66.0307 (10.).


This ordinance passed and adopted this 24th day of May, 2022.

VILLAGE OF SUSSEX

Attest:


Anthony J. LeDonne, President




Jennifer Moore, Interim Clerk

Village of Sussex / Town of Lisbon
Boundary Agreement Attachment

VILLAGE OF SUSSEX 2022 BOUNDARY AGREEMENT ATTACHMENT – LEGAL DESCRIPTIONS

Description 1A

Map Key	PIN
1	LSBT0201998001
2	LSBT0201998002

Commencing at the NW Corner NE1/4, Section 15, T8N, R19E, then south, along the west line of the NE1/4 of said Section 15, a distance of 50.0 feet, to a point in the south line of Plainview Road and point of beginning;

- from said point of beginning, then south, along the west line of the NE1/4 of said Section 15, to the SW corner of the NW1/4, NE1/4 of said Section 15;
- then east, along the north line of Hidden Oaks, being the south line of the NW1/4, NE1/4 of said Section 15, to the SE corner of NW1/4, NE1/4 of said Section 15;
- then north, along the east line NW1/4, NE1/4 of said Section 15, to a point in the south line of Plainview road;
- Then west, along the south line of Plainview Road, to a point in west line of the NE1/4 of said Section 15, and point of beginning.

Description 1B

Map Key	PIN
3	LSBT0201999002
4	LSBT0198995
5	LSBT0198996
6	LSBT0198998
7	LSBT0198999

Commencing at the NE Corner NW1/4, Section 14, T8N, R19E, then south, along the west line of the NW1/4 of said Section 14, a distance of 50.0 feet, to a point in the south line of Plainview Road and point of beginning;

- from said point of beginning, then south, along the east line NW1/4, of said Section 14, to the SE corner NE1/4, NW1/4 of said Section 14, said point being the NE corner of Majestic Heights.
- then west, along the north line of Majestic Heights, to the SW corner of NW1/4, NW1/4 of said Section 14;
- then west, along the south line NE1/4, NE1/4 Section 15, T8N, R19E, to the SW corner of CSM 4739;
- then north, along the west line of CSM 4739, a distance of 168.51' to the NW corner of CSM 4739;

Village of Sussex / Town of Lisbon
Boundary Agreement Attachment

- then east, along the north line of CSM 4739, to a point in the west line NW1/4, NW1/4 of said Section 14;
- then north, along the NW1/4, NW1/4 of said Section 14, to a point in the south line of Plainview Road;
- then east, along the south line of Plainview Road, to a point in the east line of NW1/4 of said Section 14 and point of beginning.

Description 1C - Preplan Lisbon Town Island #1

Map Key PIN

15 LSBT0198997001
16 LSBT0199999001

Commencing at the SE corner NW1/4 Section 14, T8N, R19E; then west, along the south line of NW1/4 of said Section 14, to a point in the west line of Woodside Road and point of beginning;

- from said point of beginning, then south, along the west line of Woodside Road, to a point in the south line of CSM 862;
- then west, along the south line of CSM 862, to the SW corner of CSM 862;
- then north, along the west line of CSM 862, to the NW corner of CSM 862, being a point in the south line of NW1/4 of said Section 14;
- then east, along the south line of NW1/4 of Said Section 14, to the SW corner of CSM 5839;
- then north, along the west line of CSM 5839, to the NW corner of CSM 5839;
- then east, along the north line of CSM 5839, to a point in the west line of Woodside Road;
- then south, along the west line of Woodside Road, to a point in the south line NW1/4 of said Section 14, and point of beginning.

Description 2A

Map Key PIN

8 LSBT0197998
9 LSBT0194992
10 LSBT0194993
11 LSBT0194994
12 LSBT0194996
13 LSBT0194995

Commencing at the NW Corner NW1/4, Section 13, T8N, R19E, then south, along the west line of the NW1/4 of said Section 13, a distance of 50.0 feet, to a point in the south line of Plainview Road and point of beginning;

Village of Sussex / Town of Lisbon
Boundary Agreement Attachment

- from said point of beginning, then west, a distance of 110 feet along the south line of Plainview Road to a point in the east line of Coldwater Creek Phase 4;
- then south, along the east line Coldwater Creek Phase 4, a distance of 346 feet to a point;
- then east, along the north line of Lot 158 Coldwater Creek Phase 4, a distance of 110 feet to a point in the west line of the NW1/4 of said Section 13;
- then south, along the west line of the NW1/4 of said Section 13, a distance of 409.97 feet to the NW corner of Lot 163 Coldwater Creek Phase 4 ;
- then east, along the north lines of Lots 163, 164, 165, 166, 167, and 168 Coldwater Creek Phase 4, to a point;
- then north, along the west line of Outlot 16 Coldwater Creek Phase 4, to a point in the south line of Plainview Road;
- then west, along the south line of Plainview Road, a distance of 590.5 feet to the point of beginning;

Description 2B

Map Key PIN
14 LSBT0194998

Commencing at the NE Corner NW1/4, Section 13, T8N, R19E, then south, along the east line of the NW1/4 of said Section 13, a distance of 50.0 feet, to a point in the south line of Plainview Road; then west, along the north line of Plainview Road, a distance of 229.54 feet to the point of beginning;

- from said point of beginning, then S01°12'58"E, a distance of 223.00 feet to a point;
- then S88°47'02"W, a distance of 80.00 feet, to a point;
- then N01°12'58"W, a distance of 223.00 feet, to a point in the south line of Plainview Road;
- then N88°47'02"E, a distance of 80.00 feet, to the point of beginning.

Description 3A

Map Key PIN
17 LSBT0203993

Commencing at the NE corner SW1/4 Section 15, T8N, R19E; then west, along the north line of the SW1/4 said Section 15, a distance of 666.36 feet to the point of beginning;

- from said point of beginning, then south, along the west line, a distance of 1321.21 feet to the SW corner of Lot 36 Stonewood Estates of Sussex;
- then west, along the north line of Lot 37 Stonewood Estates of Sussex and the north line of Western Oaks, a distance of 659.50 feet to the SW corner NE1/4 SW1/4 of said Section 15;

Village of Sussex / Town of Lisbon
Boundary Agreement Attachment

- then north, along the west line of NE1/4 SW1/4 of said Section 15, a distance of 1321.25 to a point in the north line of SW1/4 of said Section 15;
- then east, along the north line of SW1/4 of said Section 15, a distance of 659.50 feet to the point of beginning.

Description 3B

Map Key	PIN
18	LSBT0204999002
19	LSBT0204999003
20	LSBT0199997
21	LSBT0199996
22	LSBT0199995

Beginning at the NW corner SW1/4 of Section 14, T8N, R19E;

- then east, along the north line of SW1/4 of said Section 14, a distance of 436.0 feet to a point;
- then S00°01'47"W, a distance of 300.0 feet to a point;
- then S89°00'14"W, a distance of 436.0 feet to a point in the east line SE1/4 of Section 15, T8N, R19E;
- then north, along the east line SE1/4 of said Section 15, a distance of 45.06 feet to a point;
- then west, a distance of 33.00 feet to a point in the west line of Maple Avenue and SE corner of Lot 2 CSM 7280;
- then west, along the south line of Lot 2 CSM 7280, a distance of 442.00 feet to the SW Corner of Lot 2 CSM 7280;
- then north, along the west line of CSM 7280, a distance of 255.0 feet to a point in the north line SE1/4 of said Section 15;
- then east, along the north line SE1/4 of said Section 15, a distance of 475.0 feet to the point of beginning.

Description 3C Preplan Lisbon Town Island #2

Map Key	PIN
23	LSBT0199994
24	LSBT0199993
25	LSBT0199992
26	LSBT0199991
27	LSBT0204998004

Commencing at the SE corner SE1/4 Section 15, T8N, R19E; then north along the east line of SE1/4 of said Section 15, a distance of 924.00 feet to the point of beginning;

Village of Sussex / Town of Lisbon
Boundary Agreement Attachment

- from said point of beginning, then S89°52'52"W, a distance of 400.00 feet to the SW corner of CSM 4196;
- then N00°01'34"E, a distance of 475.00 feet to the NW corner of CSM 4196;
- then N89°52'52"E, along the north line of CSM 4196, a distance of 400.00 feet to a point in the east line of SE1/4 of said Section 15;
- then north, to a point in a westerly projection of the south line of Outlot 1 Hidden Hills;
- then S86°38'13"E, along the southerly line of said Outlot 1 and its westerly projection, a distance of 237 feet to a point;
- then S67°32'13"E, along the southerly line of said Outlot 1, a distance of 213.84 feet to a point;
- then southerly, along the easterly line of said Outlot 1, a distance of 320.17 feet to a point in the north line of Outlot 2 Hidden Hills;
- then S88°30'47"W, along the north line of said Outlot 2 and its westerly projection, a distance of 435.49 feet to a point in the east line SE1/4 of said Section 15;
- then south, along the east line of SE1/4 of said Section 15, a distance of 396.83 feet to the point of beginning.

Description 3D Preplan Lisbon Town Island #3

Map Key PIN
28 LSBT0199989

Commencing at the SW corner of the SW1/4 of Section 14, T8N, R19E; then east, along the south line of the SW1/4 of said Section 14, a distance of 1106.09 feet to a point; then north, 50.0 feet to a point in the north line of Good Hope Road and point of beginning;

- from said point of beginning, then north along the west line of CSM 382 and its northerly projection, a distance of 367.42 feet to a point;
- then east, along a line parallel with and 208.71 feet northerly of the north line of CSM 382, a distance of 208.71 feet to a point;
- then south, a distance of 367.42 feet to a point in the north line of Good Hope Road and the SE corner of CSM 382;
- then west, along the north line of Good Hope Road, a distance of 208.71 feet to the point of beginning.

Description 3E Preplan Lisbon Town Island #4

Map Key PIN
29 LSBT0229992
30 LSBT020499
31 LSBT0204993

Village of Sussex / Town of Lisbon
Boundary Agreement Attachment

Beginning at the SE corner of SE1/4 of Section 15, T8N, R19E;

- then north, along the east line of the SE1/4 of said Section 15, a distance of 20.0 feet to a point;
- then N85°37'28"W, a distance of 380 feet to to a point;
- then N02°15'28"W, a distance of 226.58 feet to a point in the south line of Block 5 Centennial Oaks;
- then N85°37'28"W, along the south line of said Block 5, a distance of 403.27 feet to a point;
- then S02°15'28"E, a distance of 269.20 to a point in the south line of Good Hope Road;
- then SE, along the south line of Good Hope Road to the NW corner of CSM 8335;
- then S00°09'14"W, along the west line of CSM 8335 to the SW corner of said CSM;
- then N89°52'52"E, along the south line of CSM 8335 and its easterly projection, a distance of 422.36 feet to a point in the east line of NE1/4 Section 22, , T8N, R19E;
- then north, along the east line of NE1/4 of said Section 22, a distance of 230.00 feet to the point of beginning.

Description 3F

Map Key	PIN	Map Key	PIN
32	LSBT0229996001	39	LSBT0204998005
33	LSBT0229996	40	LSBT0204998003
34	LSBT0229998	41	LSBT0204998002
35	LSBT0229997	42	LSBT0204997
36	LSBT0229995	43	LSBT0203999002
37	LSBT0229998001	44	LSBT0203999003
38	LSBT0229998002		

Commencing at the SE corner of SE1/4 of Section 15, T8N, R19E; then north, along the east line of the SE1/4 of said Section 15, a distance of 20.0 feet to a point in the centerline of Good Hope Road; then N85°37'28"W along the centerline of Good Hope Road, a distance of 1211.65 feet to a point; then S80°43'22"W along the centerline of Good Hope Road, a distance of 121.49 feet, to a point in the southerly projection of the east line of Ridgewood Road and point of beginning;

- from said point of beginning, then northerly, along a southerly projection of the east line of Ridgewood Road, a distance of 50.0 feet to a point in the north line of Good Hope Road;
- then SW, along the north line of Good Hope Road to the SE corner of CSM 6101;
- then north, along the east line of CSM 6101, to the NE corner of CSM 6101;
- then west, along the north line of CSM 6101 to the NW corner of CSM 6101 and point in the east line of Lot 2 CSM 4195;
- then north, along the east line Lot 2 CSM 4195, a distance of 282.80 feet to the NE corner Lot 2 CSM 4195;
- then west along the north line of CSM 4195, to the NW corner of Lot 2 CSM 4195 and point in the west line of the SE1/4 of said Section 15;

Village of Sussex / Town of Lisbon
Boundary Agreement Attachment

- then south, along the west line of the SE1/4 of said Section 15, to the SE corner of Lot 11 Stonewood Estates of Sussex;
- then S89°50'00"W, along the southerly line of Stonewood Estates of Sussex, a distance of 292.41 feet to a point;
- then S00°10'00"E, along the easterly line of Stonewood Estates of Sussex, a distance of 300.00 feet to a point in the north line of Good Hope Road;
- then west, along the north line of Good Hope Road, a distance of 405.92 feet to a point;
- then south, along a southerly projection of the Stonewood Estates of Sussex, a distance of 100.0 feet to a point in the south line of Good Hope Road;
- then east, along the south line of Good Hope Road, to a point in the west line of the NE1/4 of Section 22, T8N, R19E;
- then south, along the west line of the NE1/4 of said Section 22, to a point in the north line of the Union Pacific Railroad;
- then SE, along the north line of the Union Pacific Railroad, to a point in the east line of the SE1/4 of said Section 22;
- then north, along the east line of the SE1/4 of Section 22, to the SE corner of the NE1/4 of said Section 22;
- then north, along the east line of the NE1/4 of Section 22 to a point in the south line of CSM 1191;
- then west, along the south line of CSM 1191 to the SW corner of CSM 1191;
- then north, along the west line of CSM 1191, a distance of 256.0 feet to the NW corner of CSM 1191;
- then east, along the north line of CSM 1191, to a point in the east line of NE1/4 of said Section 22;
- then north, along the east line of the NE1/4 of said Section 22, to the SE corner of the NE1/4, NE1/4 of said Section 22;
- then west, along the south line of the NE1/4, NE1/4 of said Section 22 to the SW corner of NE1/4, NE1/4 of said Section 22;
- then north, along the west line of NE1/4, NE1/4 of said Section 22, to the NE corner of NW1/4, NE1/4 of said Section 22;
- then east, along the north line of NW1/4, NE1/4 of said Section 22, to a point in the south line of Good Hope Road;
- then NE, along the south line of Good Hope Road to a point in the southerly projection of the east line of Ridgewood Road;
- then NW, along the southerly projection of the east line of Ridgewood Road, a distance of 50.0 feet to a point in the centerline of Good Hope Road and point of beginning;

Description 5A

Map Key	PIN
45	LSBT0225998004
46	LSBT0225997

Commencing at the SW corner of NE1/4 of Section 21, T8N, R19E, then north, along the west line of the NE1/4 of said Section 21, a distance of 63 feet to a point in the north line of Silver Spring Drive and point of beginning;

- from said point of beginning, then SE, along the north line of Silver Spring Drive to a point in the west line of CSM 10938;
- then north, along the west line of CSM 10938, to a point in the south line of Waukesha County Bugline Recreational Trail;
- then NW, a distance of 800 feet along the south line of said Bugline Trail to a point;
- then NE, with a deflection angle to the right of 90°00', to a point in the north line of the Union Pacific Railroad;
- then NW, along the north line of the Union Pacific Railroad, to a point in the west line NE1/4 of said Section 21;
- then south, along the west line of NE1/4 of said Section 21 to a point in the north line of Silver Spring Road and point of beginning;

Description 6A

Map Key	PIN
47	LSBT0253998

Commencing at the SW corner of NE1/4 of Section 28, T8N, R19E; then north, along the west line NE1/4 of said Section 28 to the SW corner of N1/2, NE1/4 of said Section 28 and point of beginning;

- from said point of beginning, then east, along the south line of N1/2, NE1/4 of said Section 28, to a point in the west line of Highway 164;
- then north, along the west line of Highway 164, to a point in the north line S1/2, N1/2, NE1/4 of said Section 28;
- then west, along the north line of S1/2, N1/2, NE1/4 of said Section 28, to a point in the west line NE1/4 of said Section 28;
- then south, along the west line of NE1/4 of said Section 28, to the SW corner of N1/2, NE1/4 of said Section 28 and point of beginning;

Description 6B Preplan Lisbon Town Island #5

Village of Sussex / Town of Lisbon
Boundary Agreement Attachment

Map Key	PIN
48	LSBT0250998
49	LSBT0250997
50	LSBT0250999

Commencing at the NE corner NW1/4 of Section 27, T8N, R19E; then south along the east line of NW1/4 of said Section 27, a distance of 57 feet to a point in the south line of Main Street and point of beginning;

- from said point of beginning, then south along the east line of NW1/4 of said Section 27, a distance of 208.75 feet to a point;
- then west, along a line parallel with and 208.75 feet southerly of the south line of Main Street, to a point the east line of Pewaukee Road;
- then north, and NE along the east line of Pewaukee Road, to a point in the south line of Main Street;
- then east, along the south line of Main Street, to a point in the east line NW1/4 of said Section 27 and point of beginning.

Description 6C Preplan Lisbon Town Island #6

Map Key	PIN
51	LSBT0250993
52	LSBT0251997
53	LSBT0251998
54	LSBT0251996
55	LSBT0251995

Commencing at the NW corner SW1/4 of Section 27, T8N, R19E; then east along the north line of the SW1/4 of said Section 27, a distance of 631.48 feet to the SW corner of CSM 1832 and point of beginning;

- from said point of beginning, then N00°26'E, a distance of 200.35 feet to the NW corner of CSM 1832;
- then S89°34'E, along the north line of CSM 1832, a distance of 529.21 feet to a point in the centerline of Pewaukee Road;
- then S29°51'W, along the centerline of Pewaukee Road, a distance of 230.00 feet, to a point in the north line SW1/4 of said Section 27;
- then S30°40'W, along the centerline of Pewaukee Road, a distance of 176.70 feet to a point;
- then S64°26'E, a distance of 187.40 feet to a point;
- then S25°04'W, a distance of 149.65 feet to a point;
- then N56°58'W, a distance of 249.94 feet to a point in the centerline of Pewaukee Road;

Village of Sussex / Town of Lisbon
Boundary Agreement Attachment

- then SW, along the centerline of Pewaukee Road, to a point in the westerly projection of the north line of Eagles Ridge Southwest;
- then west, along the westerly projection of the north line of Eagles Ridge Southwest to a point in the west line SW1/4 of said Section 27;
- then north, along the west line SW1/4 of said Section 27, a distance of 130 feet to a point;
- then east, to a point in the east line of Highway 164, said point being located 318 feet NW of the centerline of Pewaukee Road;
- then north, along the east line of Highway 164 to a point in the north line SW1/4 of said Section 27;
- then east, along the north line SW1/4 of said Section 27 to the point of beginning.

Description 7A

Map Key	PIN
56	LSBT0256996
57	LSBT0256994
58	LSBT0256995

Beginning at the NW corner SE1/4 Section 28, T8N, R19E;

- then east, along the north line SE1/4 of said Section 28, a distance of 1361.76 feet to the NW corner of Lot 2 CSM 10012;
- then south, along the west line of Lot 2 CSM 10012, a distance of 2153.89 feet to a point in the north line of CSM 1132;
- then S43°49'30"E, along the easterly line of CSM 1132, a distance of 483.10 feet to a point;
- then S20°44'30"E, along the easterly line of CSM 1132, a distance of 143.05 feet to a point in the north line of Richmond Road;
- then west, along the south line of Richmond Road, to the SW corner of CSM 1132;
- then south, along a southerly projection of the west line of CSM 1132, a distance of 33 feet to a point in the center line of Richmond Road;
- then west, along the centerline of Richmond Road and south line SE1/4 of said Section 28, to the SW corner of SE1/4 of said Section 28;
- then north, along the west line of SE1/4 of said Section 28, to the point of beginning.

Description 7B Preplan Lisbon Town Islands #7.1 and #7.2

Village of Sussex / Town of Lisbon
Boundary Agreement Attachment

Map Key PIN

59 LSBT0251993 Island #7.1
60 LSBT0251991 Island #7.2

Preplan Island #7.1

Commencing at the SW corner of SW1/4 of Section 27, T8N, R19E; then north, along the west line of SW1/4 of said Section 27, a distance of 264 feet to a point; then east, along a line parallel with the south line of SW1/4 of said Section 27, to a point in the east line of Highway 164, and point of beginning;

- from said point of beginning , then east along a line parallel with the south line of SW1/4 of said Section 27, to a point 354.75 feet east of the west line of said SW1/4 Section;
- then north, along a line parallel with the west line of said SW1/4 Section, a distance of 132.00 feet to a point;
- then west, along a line parallel with the south line of said SW1/4 Section to the east line of Highway 164;
- then south, along the east line of Highway 164, a distance of 132.00 feet to the point of beginning.

Preplan Island #7.2

Commencing at the SW corner of SW1/4 of Section 27, T8N, R19E; then east, along the south line of SW1/4 of said Section 27, to a point in the east line of Highway 164, and point of beginning;

- from said point of beginning , then east along the south line of SW1/4 of said Section 27, to a point 354.75 feet east of the SW corner of said SW1/4 Section;
- then north, along a line parallel with the west line of said SW1/4 Section, a distance of 132.00 feet to a point;
- then west, along a line parallel with and 132 feet north of the south line of said SW1/4 Section to the east line of Highway 164;
- then south, along the east line of Highway 164, a distance of 132.00 feet to the point of beginning.

Description 5B

Village of Sussex / Town of Lisbon
Boundary Agreement Attachment

Map Key PIN
61 LSBT0276997

Commencing at the NW corner SE1/4 of Section 33, T8N, R19E; then south, along the west line of SE1/4 of said Section 33, a distance of 65 feet to a point in the south line of Lisbon Road; then east along the south line of Lisbon Road, a distance of 990.5 feet to the NE corner of CSM 7539 and point of beginning;

- from said point of beginning, then south, along the west line of CSM 7539 and its southerly projection, a distance of 655.12 feet to a point in the north line of Seven Stones of Sussex Addition No 1;
- then east, along the north line of Seven Stones of Sussex and Addition No 1, a distance of 332.50 feet to a point;
- then north, along a line parallel with the east line of CSM 7539, a distance of 655.12 feet to a point in the south line of Lisbon Road;
- then west, along the south line of Lisbon Road, a distance of 332.5 feet to the NE corner of CSM 7539 and point of beginning.

Description 8A

Map Key PIN
62 LSBT0282979001
63 LSBT0282979002

Commencing at the NE corner SW1/4 or center of Section 26, T8N, R19E; then south, along the east line of SW1/4 of said Section 26, said line being parallel and 11 feet west of the west line of Spring Green Heights Addition #1, a distance of 2636.57 feet to the SE corner of said Section 26; then west, along the south line of SW1/4 of said Section 26, a distance of 1072.72 feet to the NE corner of CSM 11454 and point of beginning;

- from said point of beginning, then south, along the east line of CSM 11454, to the SE corner of CSM 1154;
- then S89°05'45"W, along the south line of CSM 11454, a distance of 392.99 feet to a point;
- then N00°20'45"E, a distance of 8 feet to a point;
- then S89°05'45"W, along the south line of CSM 11454 being parallel with and 33 north of the centerline of Northview Drive, a distance of 198.58 feet to a point in the east line of Johanssen Farms being 8 feet northerly of the SE corner of Lot 16;
- then north, along the west line of CSM 11454, a distance of 476.40 feet to a point;
- then N89°07'02"E, a distance of 81.64 feet to a point;
- then north, along the west line of CSM 11454 to a point in the south line of SW1/4 of said Section 26;

Village of Sussex / Town of Lisbon
Boundary Agreement Attachment

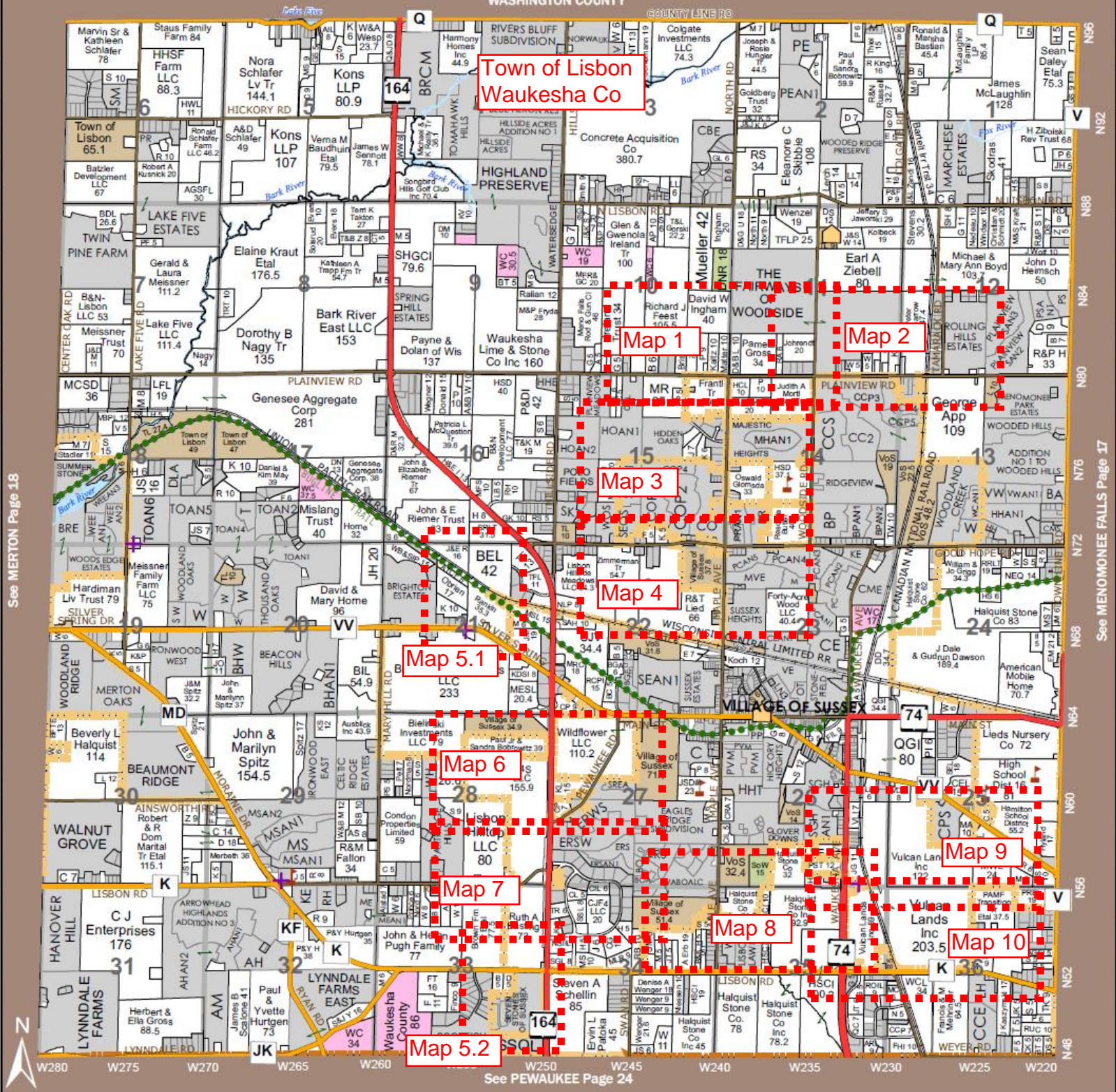
- then east, along the south line of SW1/4 of said Section 26 to the NE corner of CSM 11454 and point of beginning;

Description 8B

Map Key	PIN
65	LSBT0248983005
66	LSBT0248981
67	LSBT0248980

Commencing at the NE corner SW1/4 or center of Section 26, T8N, R19E; then south, along the east line of SW1/4 of said Section 26, said line being parallel and 11 feet west of the west line of Spring Green Heights Addition #1, a distance of 1318.10 feet to the NE corner SE1/4, SW1/4, said Section 26; then east, along the north line of the SW1/4, SE1/4 of said Section 26, a distance of 66.04 feet to the NW corner of CSM 6863 and point of beginning;

- from said point of beginning, then east along the north line of Parcel 3 CSM 6863 and its easterly projection, a distance of 1244.72 feet to a point in the east line of SW1/4 SE1/4 of said Section 26;
- then south, along the east line of SW1/4 SE1/4 of said Section 26, a distance of 416.93 feet to a point;
- then west, along the south line of Parcel 3 CSM 6863 and its easterly projection, a distance of 1244.44 feet to the SW corner of Parcel 3 CSM 6863;
- then north along the west line of Parcel 3 CSM 6863, a distance of 416.93 feet to the point of beginning.



See MERTON Page 18

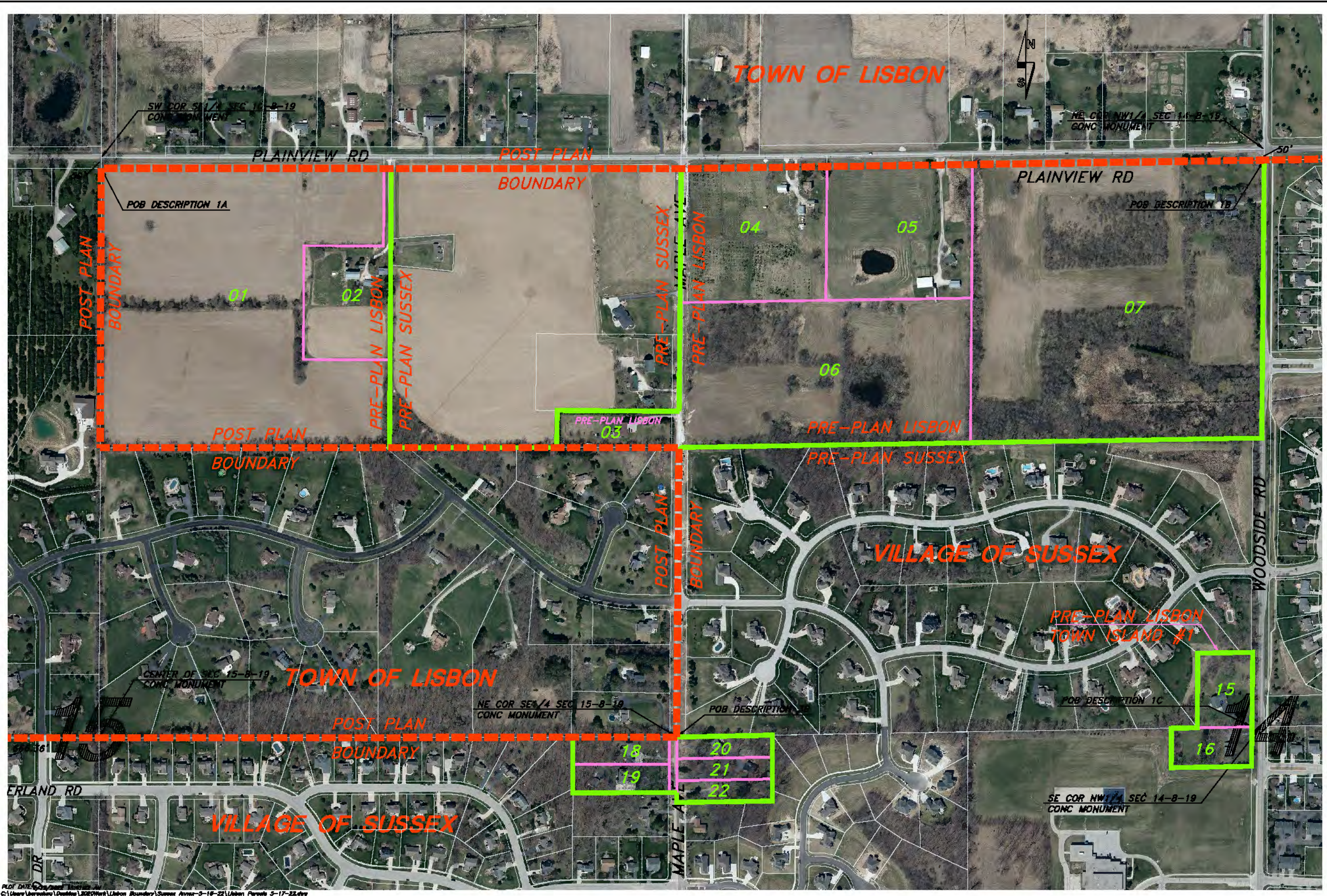
See MEMONONEE FALLS Page 17

See PEWAUKEE Page 24

Village of Sussex / Town of Lisbon
 2022 Boundary Agreement Attachment
 Map Key
 For Boundary Description Delineation Maps



5/19/2022



POST-AGREEMENT BOUNDARY
 PRE-AGREEMENT BOUNDARY
 PARCELS IN AGREEMENT LIMITS

0 100 200
 SCALE
REDUCED 1/2
 REVISED 5/19/2022
 SCALE : 1" = 200'

PROJECT : #A117.0283
 DATE : 5/9/22
 DRAWN BY : BAO
 APPROVED BY : BAO

VILLAGE OF SUSSEX / TOWN OF LISBON
**2022 BOUNDARY
 AGREEMENT ATTACHMENT**
 MAP ONE


KUNKEL
 engineering
 group
 107 Parallel Street
 Beaver Dam, WI 53016
 (920)358-8447
 Fax (920)358-8484

PLOT DATE: 05/19/2022
 C:\Users\jbruehler\Desktop\BROWWork\Lisbon Boundary\Sussex Annex-5-18-22\Lisbon Parcels 5-17-22.dwg

TOWN OF LISBON

NW COR NW1/4 SEC 13-8-19
CONC MONUMENT

POB DESCRIPTION 2B

PLAINVIEW RD

POST PLAN
BOUNDARY

229.5'

POB DESCRIPTION 2A

NE COR NW1/4 SEC 13-8-19
CONC MONUMENT

POST PLAN
BOUNDARY

GOLDWATER CIR

VILLAGE OF SUSSEX

TOWN OF LISBON

13

POST-AGREEMENT BOUNDARY
PRE-AGREEMENT BOUNDARY
PARCELS IN AGREEMENT LIMITS



0 100 200
SCALE

REDUCED 1/2
REVISED 5/19/2022

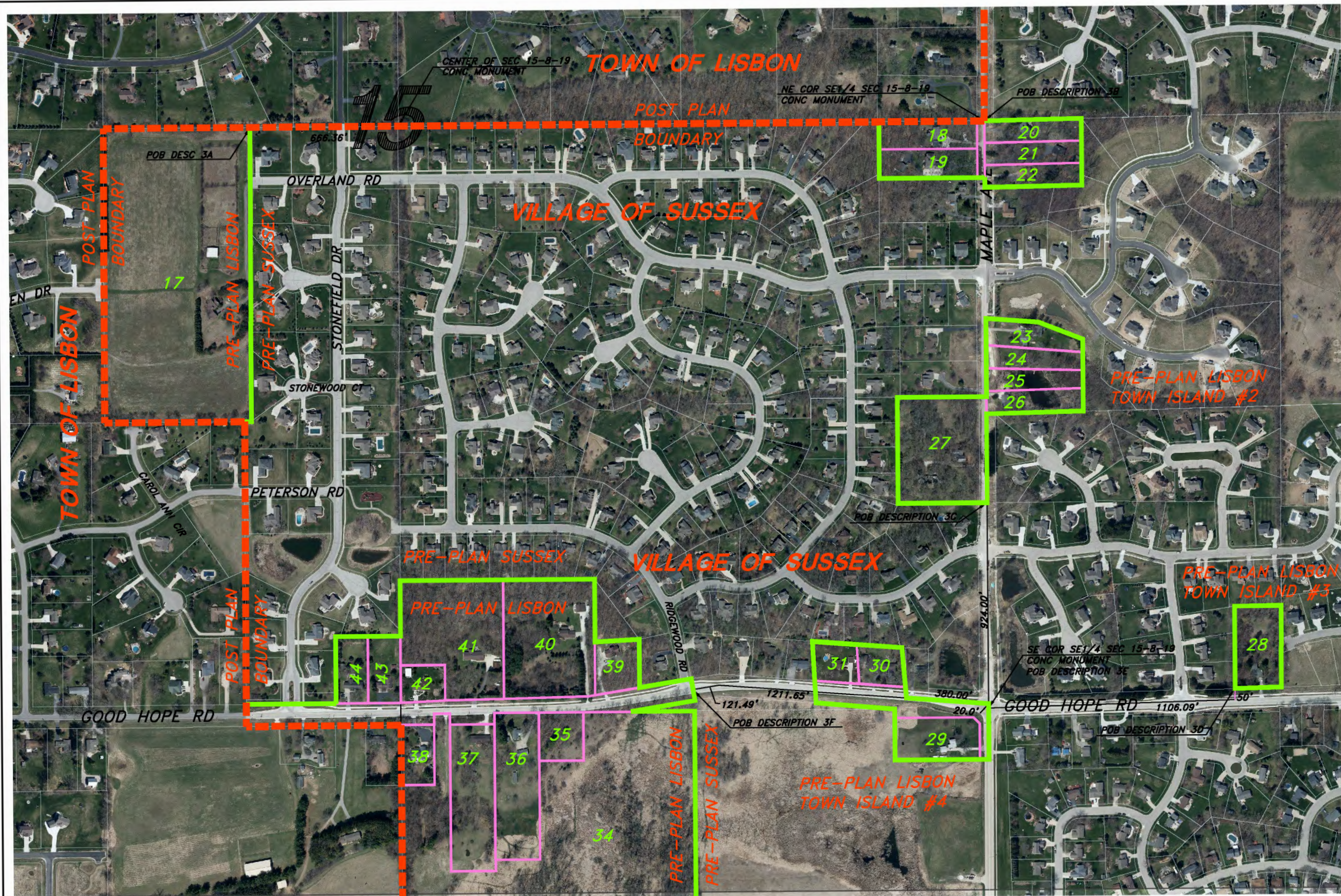
SCALE : 1" = 200'

PROJECT : #1717.1285
DATE : 5/3/22
DRAWN BY : BAO
APPROVED BY : BAO

VILLAGE OF SUSSEX / TOWN OF LISBON
2022 BOUNDARY
AGREEMENT ATTACHMENT
MAP TWO



PLOT DATE: 5/19/2022 1:20:53 PM
C:\Users\jburrows\Desktop\2022Work\Lisbon Boundary\Sussex Annex-5-18-22\Lisbon Parcels 5-17-22.dwg



POST-AGREEMENT BOUNDARY
 PRE-AGREEMENT BOUNDARY
 PARCELS IN AGREEMENT LIMITS

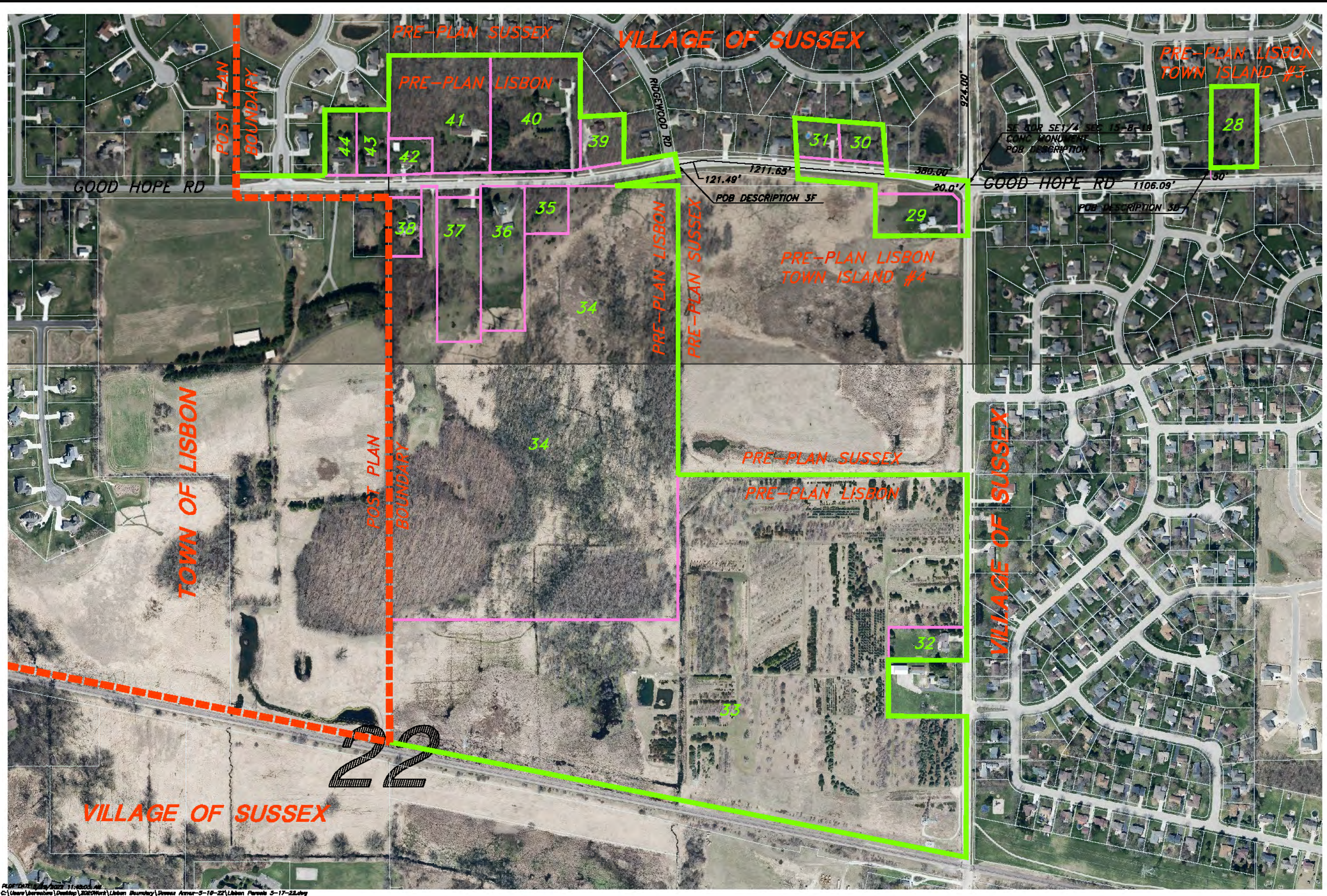
0 100 200
 SCALE
REDUCED 1/2
 REVISED 5/19/2022
 SCALE : 1" = 200'

PROJECT : #A17.1025
 DATE : 5/5/22
 DRAWN BY : BAO
 APPROVED BY : BAO

VILLAGE OF SUSSEX / TOWN OF LISBON
 2022 BOUNDARY
 AGREEMENT ATTACHMENT
 MAP THREE


KUNKEL
 engineering
 group
 107 Parallel Street
 Beaver Dam, WI 53916
 (920)356-9447
 Fax (920)356-9454

PLOT DATE: 5/19/2022 11:56:20 AM
 C:\Users\jcornejo\Desktop\2022Work\Lisbon Boundary\Sussex Annex-5-16-22\Lisbon Parcels 5-17-22.dwg



0 100 200
 SCALE
 REDUCED 1/2
 REVISED 5/18/2022
 SCALE: 1" = 300'

POST-AGREEMENT BOUNDARY
 PRE-AGREEMENT BOUNDARY
 PARCELS IN AGREEMENT LIMITS

PROJECT: #1017.1025	DATE: 5/17/22	DRAWN BY: BAO	APPROVED BY: BAO
---------------------	---------------	---------------	------------------

VILLAGE OF SUSSEX / TOWN OF LISBON
 2022 BOUNDARY
 AGREEMENT ATTACHMENT
 MAP FOUR

KUNKEL
 engineering
 group

107 Parallel Street
 Beaver Dam WI 53016
 (920)358-8447
 Fax (920)358-8484

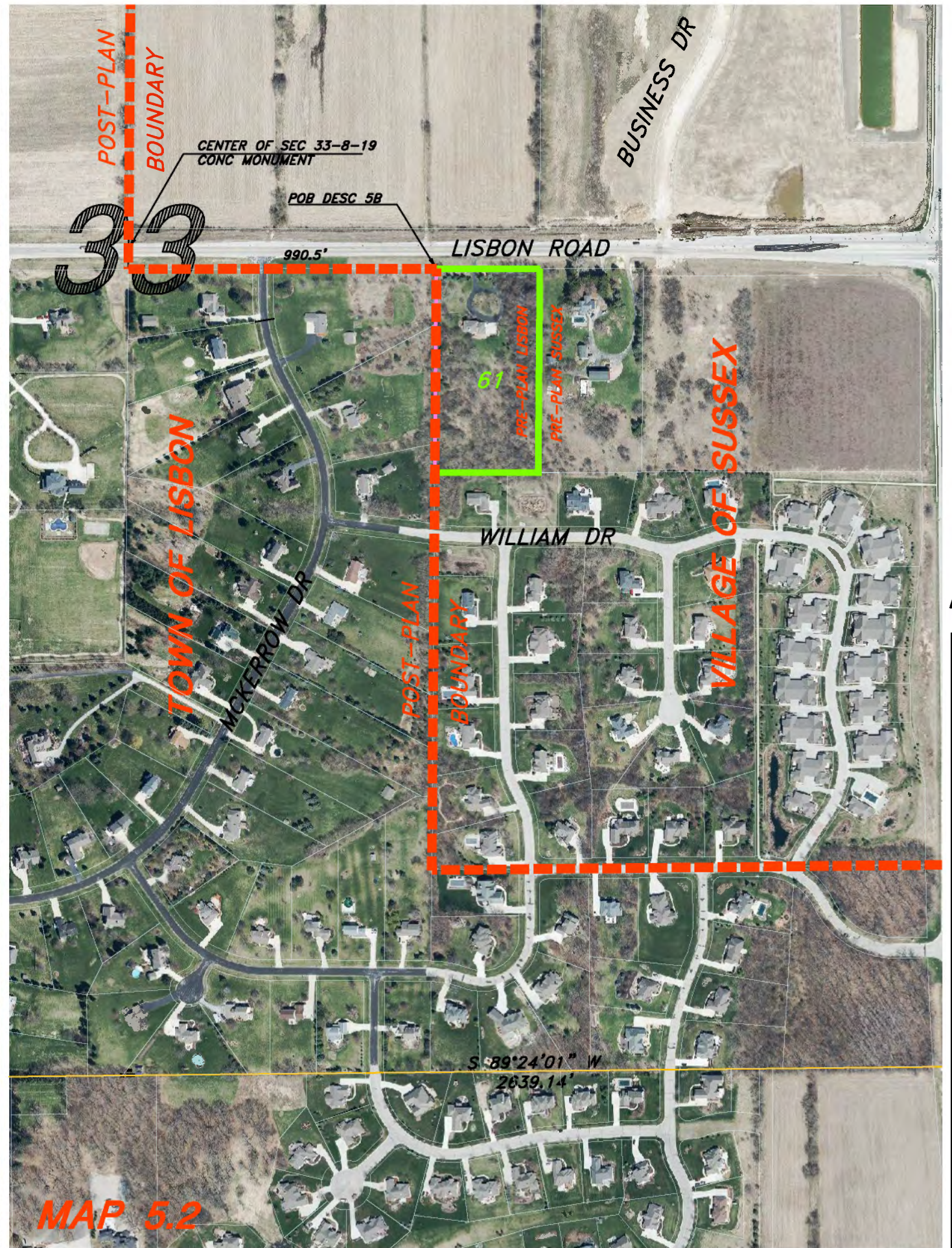
SHEET 4 OF 10

PL017.1025.dwg 2022 11:48:03 AM
 C:\Users\baorobert\Desktop\2022\Work\Lisbon Boundary\Sussex Annex 5-18-22\Lisbon Parcels 5-17-22.dwg



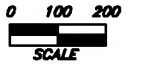
MAP 5.1

PLOT DATE: 8/18/2022 11:46:01 AM
 G:\Users\barahwa\Desktop\2020\work\Lisbon Boundary\Sussex Annex-5-18-22\Lisbon Parcels 5-17-22.dwg



MAP 5.2

- POST-AGREEMENT BOUNDARY
- PRE-AGREEMENT BOUNDARY
- PARCELS IN AGREEMENT LIMITS



REDUCED 1/2
 REVISED 5/18/2022

SCALE : 1" = 200'

PROJECT : # R17.1025	DRAWN BY : BAO
DATE : 5/5/22	APPROVED BY : BAO

VILLAGE OF SUSSEX / TOWN OF LISBON
 2022 BOUNDARY
 AGREEMENT ATTACHMENT
 MAPS 5.1 & 5.2

KUNKEL
 engineering
 group

107 Parallel Street
 Beaver Dam, WI 53016
 (920) 356-8447
 Fax (920) 356-8454



- - - POST-AGREEMENT BOUNDARY
- PRE-AGREEMENT BOUNDARY
- PARCELS IN AGREEMENT LIMITS

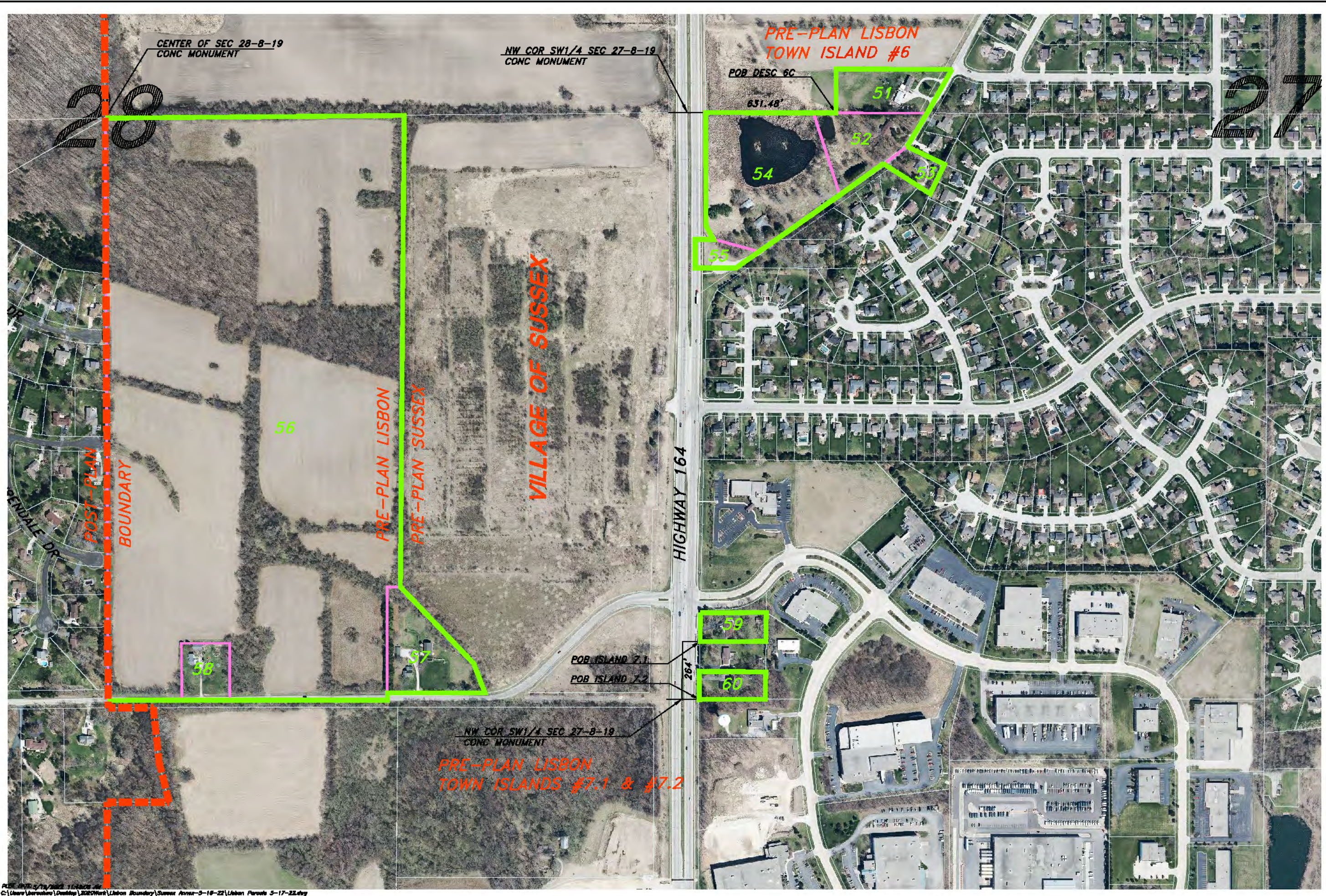
0 100 200
SCALE
REDUCED 1/2
REVISED 5/19/2022
SCALE : 1" = 200'

PROJECT : #1017.1285
DATE : 5/3/22
DRAWN BY : BAO
APPROVED BY : BAO

VILLAGE OF SUSSEX / TOWN OF LISBON
2022 BOUNDARY AGREEMENT ATTACHMENT
MAP SIX

KUNKEL
engineering
group
107 Parallel Street
Beaver Dam, WI 53016
(920)358-8447
Fax (920)358-8454

Plot Date: 5/19/2022 11:47:23 AM
C:\Users\kunkel\OneDrive\Documents\GIS\Work\Lisbon Boundary\Sussex Annex-5-18-22\Lisbon Parcels 5-17-22.dwg



CENTER OF SEC 28-8-19
CONC MONUMENT

NW COR SW1/4 SEC 27-8-19
CONC MONUMENT

PRE-PLAN LISBON
TOWN ISLAND #6

POB DESC 6C

631.48'

POB ISLAND 7.1

POB ISLAND 7.2

NW COR SW1/4 SEC 27-8-19
CONC MONUMENT

PRE-PLAN LISBON
TOWN ISLANDS #7.1 & #7.2

HIGHWAY 164

264'

- POST-AGREEMENT BOUNDARY
- PRE-AGREEMENT BOUNDARY
- PARCELS IN AGREEMENT LIMITS

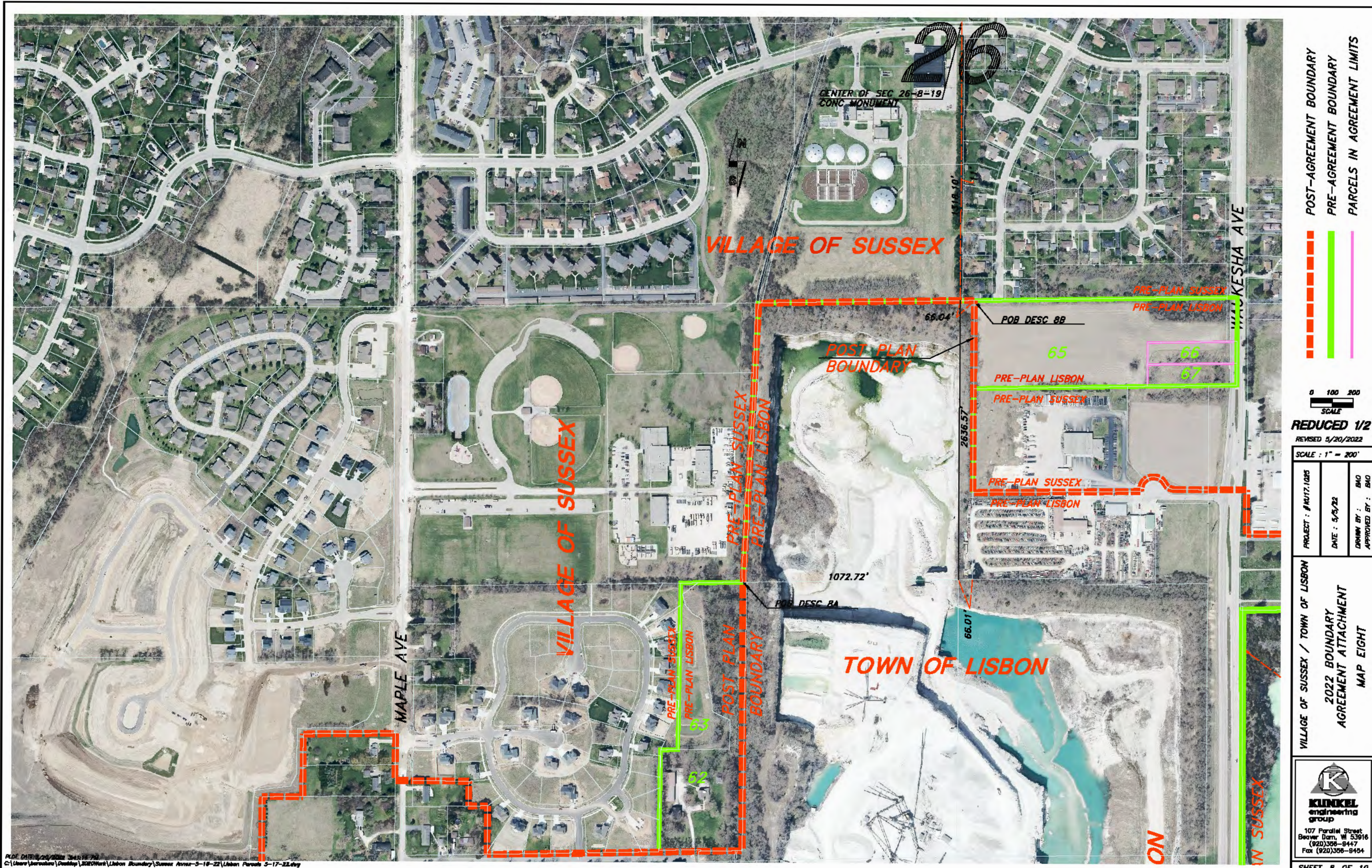
0 100 200
SCALE
REDUCED 1/2
REVISED 5/19/2022
SCALE : 1" = 200'

PROJECT : #1017.1285
DATE : 5/3/22
DRAWN BY : BAO
APPROVED BY : BAO

VILLAGE OF SUSSEX / TOWN OF LISBON
2022 BOUNDARY
AGREEMENT ATTACHMENT
MAP SEVEN

KUNKEL
engineering
group
107 Parallel Street
Beaver Dam, WI 53016
(920)358-8447
Fax (920)358-8454

FILED: 5/19/2022 1:04:02 PM
C:\Users\kunkel\OneDrive\Desktop\2022Work\Lisbon Boundary\Sussex Annex-5-18-22\Lisbon Parcels 5-17-22.dwg



DATE: 5/20/2022
 C:\Users\lbraccio\OneDrive\Work\Lisbon Boundary\Sussex Annex-5-18-22\Urban Parcels 5-17-22.dwg

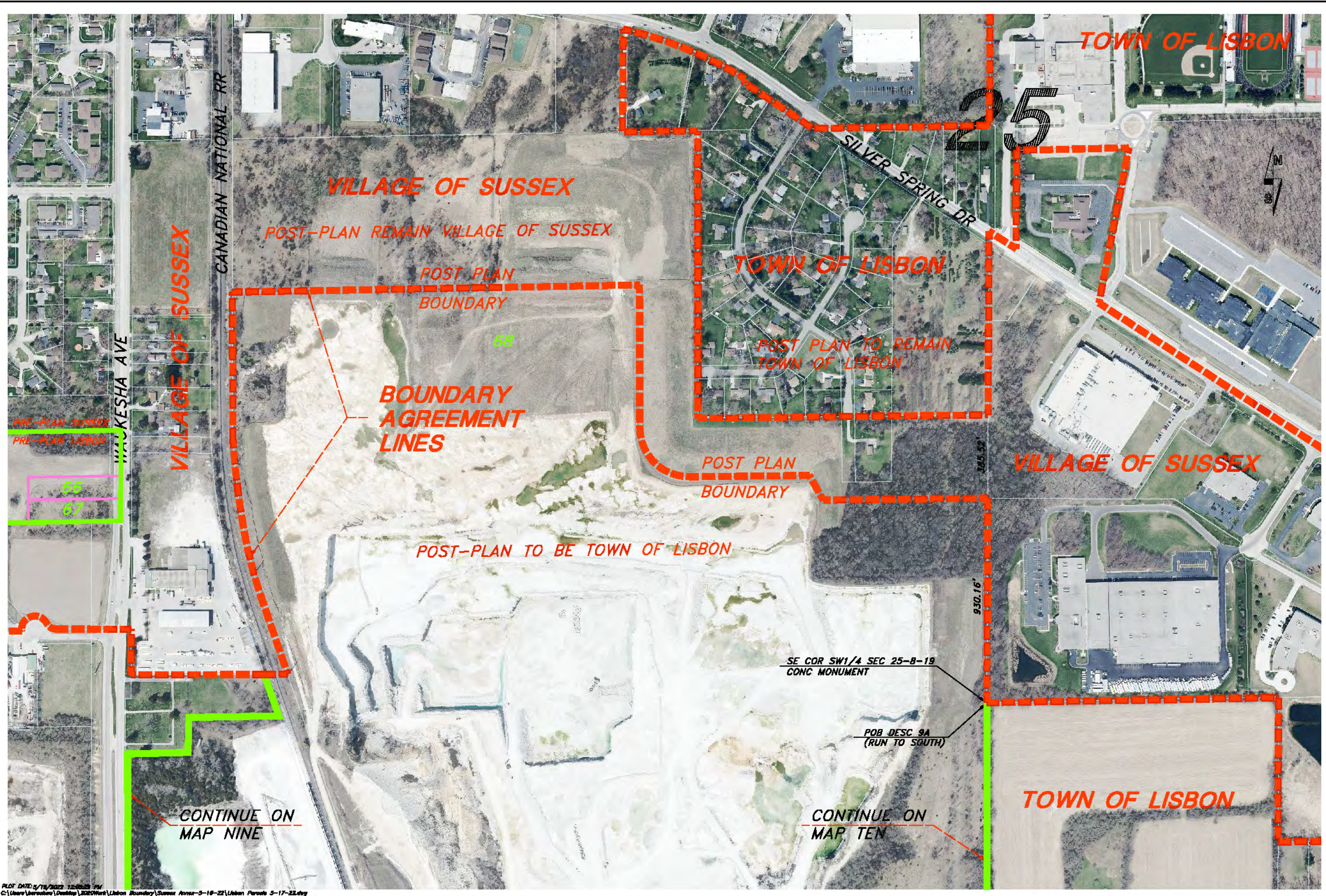
POST-AGREEMENT BOUNDARY
 PRE-AGREEMENT BOUNDARY
 PARCELS IN AGREEMENT LIMITS

0 100 200
 SCALE
 REDUCED 1/2
 REVISED 5/20/2022

SCALE: 1" = 200'
 PROJECT: #1717.1025
 DATE: 5/5/22
 DRAWN BY: BAO
 APPROVED BY:

VILLAGE OF SUSSEX / TOWN OF LISBON
 2022 BOUNDARY
 AGREEMENT ATTACHMENT
 MAP EIGHT


 KINKEL
 engineering
 group
 107 Parallel Street
 Beaver Dam, WI 53016
 (920)356-8447
 Fax (920)356-8454
 SHEET 8 OF 10



- - - POST-AGREEMENT BOUNDARY
- - - PRE-AGREEMENT BOUNDARY
- - - PARCELS IN AGREEMENT LIMITS

0 100 200
SCALE
REDUCED 1/2
REVISED 5/19/2022
SCALE : 1" = 200'

PROJECT : #1017.1085
DATE : 5/9/22
DRAWN BY : BAO
APPROVED BY : BAO

VILLAGE OF SUSSEX / TOWN OF LISBON
2022 BOUNDARY
AGREEMENT ATTACHMENT
MAP NINE

KUNKEL
engineering
group
107 Parallel Street
Beaver Dam, WI 53016
Tel (920)358-8447
Fax (920)358-8454

PLOT DATE: 5/19/2022 12:05:28 PM
C:\Users\jacob@kunkel.com\Desktop\2022\Work\Lisbon Boundary\Sussex Annex-5-16-22\Lisbon Parcels 5-17-22.dwg