

**NOTICE OF INTENTION TO CIRCULATE
PETITION FOR ANNEXATION OF TERRITORY
FROM TOWN OF VIENNA TO VILLAGE OF DEFOREST**

PLEASE TAKE NOTICE that the Peter E. Snyder and Alla Snyder Revocable Living Trust dated October 14, 2024, and any amendments thereto (whose post office address is 900 Allison Street, Sun Prairie, WI 53590) has caused this Class 1 Notice of Intention to Circulate an Annexation Petition to be published with respect to the annexation from the Town of Vienna, Dane County, Wisconsin to the Village of DeForest, Dane County, Wisconsin of the territory legally described on the attached Exhibit A.

The scale map describing the territory proposed to be annexed is also included on the attached Exhibit A and may be inspected at the office of the Town of Vienna Town Clerk and at the office of the Village of DeForest Village Clerk at the addresses below:

Kathleen Clark, Town Clerk
Town of Vienna
7161 County Highway I
DeForest, WI 53532

Calli Lundgren, Village Clerk
Village of DeForest
120 South Stevenson Street
DeForest, WI 53532

Not less than ten (10) days nor more than twenty (20) days from the date this Class 1 Notice is published, an annexation petition shall be circulated for signature.

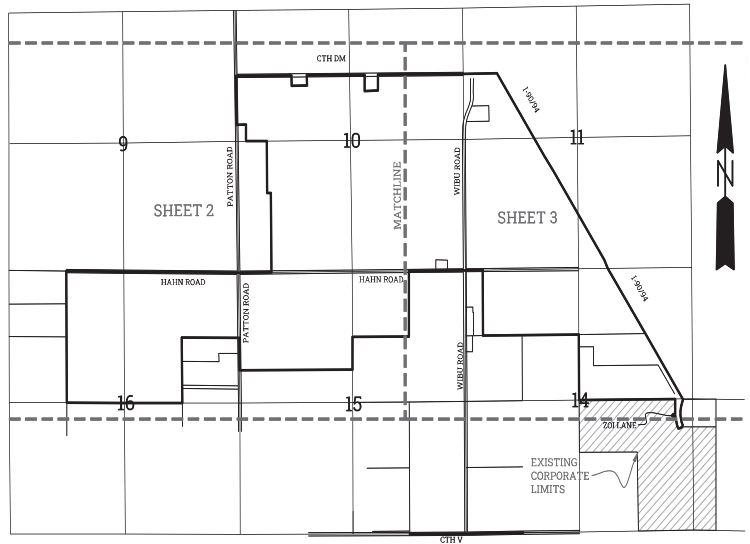
EXHIBIT A

SCALE: 1" = 4000'



LEGAL DESCRIPTION AND SCALE MAP OF TERRITORY TO BE ANNEXED

PARTS OF SECTIONS 10, 14, 15 AND 16 ALL IN TOWNSHIP 9 NORTH, RANGE 9 EAST, IN THE
 TOWN OF VIENNA, DANE COUNTY, WISCONSIN, MORE PARTICULARLY DESCRIBED AS FOLLOWS:
 ALL BEARINGS AND DISTANCES ARE OBSERVED, GRID MEASUREMENTS TIED TO DANE COUNTY
 WISCONSIN HORIZONTAL DATUM.COMMENCING AT A FOUND MAG NAIL WITH WASHER AT THE
 NORTHWEST CORNER OF THE NORTHWEST QUARTER OF SAID SECTION 16;
 THENCE SOUTH 89 DEGREES 31 MINUTES 34 SECONDS EAST ALONG THE NORTH LINE OF THE
 NORTHWEST QUARTER OF SAID SECTION 16, A DISTANCE OF 1324.19 FEET TO THE NORTHEAST
 CORNER OF THE WEST HALF OF SAID NORTHWEST QUARTER FOR A POINT OF BEGINNING;
 THENCE CONTINUING SOUTH 89 DEGREES 31 MINUTES 34 SECONDS EAST ALONG SAID NORTH
 LINE, A DISTANCE OF 1324.19 FEET TO A FOUND SURVEY SPIKE AT THE NORTHWEST CORNER OF
 THE NORTHEAST QUARTER OF SAID SECTION 16;
 THENCE SOUTH 89 DEGREES 30 MINUTES 59 SECONDS EAST ALONG THE NORTH LINE OF SAID
 NORTHEAST QUARTER, A DISTANCE OF 2648.43 FEET TO THE NORTHWEST CORNER OF
 AFORESAID SECTION 15;
 THENCE NORTH 89 DEGREES 28 MINUTES 43 SECONDS EAST ALONG THE NORTH LINE OF THE
 NORTHWEST QUARTER OF SAID SECTION 15, A DISTANCE OF 756.72 FEET;
 THENCE NORTH 00 DEGREES 25 MINUTES 33 SECONDS WEST, A DISTANCE OF 1604.40 FEET;
 THENCE SOUTH 89 DEGREES 09 MINUTES 20 SECONDS WEST, A DISTANCE OF 85.00 FEET;
 THENCE NORTH 00 DEGREES 25 MINUTES 33 SECONDS WEST, A DISTANCE OF 1047.37 FEET TO
 THE SOUTH LINE OF THE NORTHWEST QUARTER OF AFORESAID SECTION 10;
 THENCE SOUTH 89 DEGREES 34 MINUTES 33 SECONDS WEST ALONG SAID SOUTH LINE, A
 DISTANCE OF 478.71 FEET;
 THENCE NORTH 00 DEGREES 59 MINUTES 16 SECONDS WEST, A DISTANCE OF 332.88 FEET;
 THENCE SOUTH 89 DEGREES 36 MINUTES 30 SECONDS WEST, A DISTANCE OF 212.36 FEET TO THE
 WEST LINE OF THE SOUTH HALF OF THE NORTHWEST QUARTER OF SAID SECTION 10;
 THENCE NORTH 00 DEGREES 59 MINUTES 53 SECONDS WEST ALONG THE WEST LINE OF SAID
 SOUTH HALF, A DISTANCE OF 987.12 FEET TO THE NORTHWEST CORNER OF SAID SOUTH HALF;
 THENCE NORTH 89 DEGREES 32 MINUTES 35 SECONDS EAST ALONG THE NORTH LINE OF SAID
 SOUTH HALF, A DISTANCE OF 1280.77 FEET;
 THENCE SOUTH 01 DEGREES 51 MINUTES 46 SECONDS EAST, A DISTANCE OF 208.53 FEET;
 THENCE NORTH 89 DEGREES 36 MINUTES 35 SECONDS WEST, A DISTANCE OF 350.00 FEET;
 THENCE NORTH 01 DEGREES 52 MINUTES 28 SECONDS WEST, A DISTANCE OF 208.94 FEET TO THE
 NORTH LINE OF THE AFORESAID SOUTH HALF;
 THENCE NORTH 89 DEGREES 32 MINUTES 35 SECONDS EAST ALONG THE NORTH LINE OF SAID
 SOUTH HALF, A DISTANCE OF 992.26 FEET TO NORTHWEST CORNER OF THE SOUTH HALF OF THE
 NORTHEAST QUARTER OF SAID SECTION 10;
 THENCE NORTH 89 DEGREES 32 MINUTES 35 SECONDS EAST ALONG THE NORTH LINE OF SAID
 SOUTH HALF, A DISTANCE OF 347.15 FEET;
 THENCE SOUTH 00 DEGREES 00 MINUTES 38 SECONDS EAST, A DISTANCE OF 329.28 FEET;
 THENCE NORTH 87 DEGREES 58 MINUTES 31 SECONDS EAST, A DISTANCE OF 305.81 FEET;
 THENCE NORTH 00 DEGREES 22 MINUTES 49 SECONDS WEST, A DISTANCE OF 320.90 FEET TO THE
 NORTH LINE OF THE AFORESAID SOUTH HALF;
 THENCE NORTH 89 DEGREES 32 MINUTES 35 SECONDS EAST ALONG THE NORTH LINE OF SAID
 SOUTH HALF, A DISTANCE OF 1971.34 FEET TO NORTHWEST CORNER OF THE SOUTH HALF OF THE
 NORTHWEST QUARTER OF AFORESAID SECTION 11;
 THENCE NORTH 89 DEGREES 08 MINUTES 53 SECONDS EAST ALONG THE NORTH LINE OF THE
 SOUTH HALF OF THE NORTHWEST QUARTER OF SAID SECTION 11, A DISTANCE OF 772.43 FEET TO
 THE SOUTHWESTERLY RIGHT-OF-WAY LINE OF INTERSTATE 90/94;
 THENCE ALONG SAID SOUTHWESTERLY RIGHT-OF-WAY LINE FOR THE FOLLOWING ELEVEN (11)
 COURSES;
 (1) THENCE SOUTH 33 DEGREES 13 MINUTES 18 SECONDS EAST, A DISTANCE OF 2010.63 FEET;
 (2) THENCE SOUTH 34 DEGREES 52 MINUTES 01 SECONDS EAST, A DISTANCE OF 347.22 FEET;
 (3) THENCE SOUTH 33 DEGREES 13 MINUTES 00 SECONDS EAST, A DISTANCE OF 2152.92 FEET;
 (4) THENCE SOUTH 25 DEGREES 36 MINUTES 25 SECONDS EAST, A DISTANCE OF 188.79 FEET;
 (5) THENCE SOUTH 33 DEGREES 13 MINUTES 00 SECONDS EAST, A DISTANCE OF 1571.88 FEET;
 (6) THENCE SOUTH 33 DEGREES 13 MINUTES 00 SECONDS EAST, A DISTANCE OF 1583.95 FEET;
 (7) THENCE SOUTH 16 DEGREES 48 MINUTES 36 SECONDS WEST, A DISTANCE OF 109.76 FEET TO
 THE BEGINNING OF A NON-TANGENT CURVE;
 (8) THENCE SOUTHERLY ALONG SAID CURVE CONCAVE TO THE EAST HAVING A RADIUS OF 595.88
 FEET, ARC DISTANCE OF 427.64 FEET WITH A CHORD BEARING OF SOUTH 03 DEGREES 50
 MINUTES 40 SECONDS EAST;
 (9) THENCE SOUTH 12 DEGREES 14 MINUTES 52 SECONDS WEST, A DISTANCE OF 33.18 FEET;
 (10) THENCE SOUTH 64 DEGREES 48 MINUTES 14 SECONDS WEST, A DISTANCE OF 70.40 FEET;
 (11) THENCE SOUTH 88 DEGREES 14 MINUTES 07 SECONDS WEST, A DISTANCE OF 32.14 FEET TO
 THE EASTERLY LINE OF ZOI LANE;
 THENCE ALONG SAID EASTERLY LINE FOR THE FOLLOWING THREE (3) COURSES;
 (1) THENCE NORTH 25 DEGREES 11 MINUTES 22 SECONDS WEST, A DISTANCE OF 52.42 FEET;
 (2) THENCE NORTH 12 DEGREES 54 MINUTES 13 SECONDS WEST, A DISTANCE OF 212.91 FEET;



THENCE NORTH 00 DEGREES 37 MINUTES 04 SECONDS WEST, A DISTANCE OF 340.52 FEET TO THE SOUTH LINE OF THE NORTH HALF OF AFORESAID SECTION 14;
THENCE SOUTH 89 DEGREES 22 MINUTES 55 SECONDS WEST ALONG SAID SOUTH LINE, A DISTANCE OF 2211.67 FEET TO THE SOUTHEAST CORNER OF THE SOUTHEAST QUARTER OF THE NORTHWEST QUARTER OF SAID SECTION 14;
THENCE NORTH 00 DEGREES 20 MINUTES 56 SECONDS WEST ALONG THE EAST LINE OF SAID SOUTHEAST QUARTER OF THE NORTHWEST QUARTER, A DISTANCE OF
1324.14 FEET TO THE NORTHEAST CORNER OF SAID SOUTHEAST QUARTER OF THE NORTHWEST QUARTER;
THENCE SOUTH 89 DEGREES 21 MINUTES 15 SECONDS WEST ALONG THE NORTH LINE OF SAID SOUTHEAST QUARTER OF THE NORTHWEST QUARTER, A DISTANCE OF 2211.23 FEET TO A LINE 400 FEET EAST OF AND PARALLEL WITH THE WEST LINE OF THE NORTHWEST QUARTER OF SAID SECTION 14;
THENCE NORTH 00 DEGREES 07 MINUTES 31 SECONDS WEST ALONG SAID PARALLEL LINE, A DISTANCE OF 1323.12 FEET TO THE NORTH LINE OF SAID NORTHWEST QUARTER;
THENCE SOUTH 89 DEGREES 19 MINUTES 36 SECONDS WEST ALONG THE NORTH LINE OF SAID NORTHWEST QUARTER, A DISTANCE OF 400.02 FEET TO THE NORTHEAST CORNER OF THE NORTHEAST QUARTER OF THE NORTHEAST QUARTER OF AFORESAID SECTION 15;
THENCE SOUTH 89 DEGREES 25 MINUTES 29 SECONDS WEST ALONG THE NORTH LINE OF SAID NORTHEAST QUARTER OF THE NORTHEAST QUARTER, A DISTANCE OF 1305.19 FEET TO THE NORTHWEST CORNER OF SAID NORTHEAST QUARTER OF THE NORTHEAST QUARTER;
THENCE SOUTH 00 DEGREES 11 MINUTES 07 SECONDS EAST ALONG THE WEST LINE OF SAID NORTHEAST QUARTER OF THE NORTHEAST QUARTER, A DISTANCE OF 1320.07 FEET TO SOUTHEAST CORNER OF THE NORTHWEST QUARTER OF THE NORTHEAST QUARTER SAID SECTION 15;
THENCE SOUTH 89 DEGREES 32 MINUTES 59 SECONDS WEST ALONG THE SOUTH LINE OF SAID NORTHWEST QUARTER OF THE NORTHEAST QUARTER, A DISTANCE OF 1303.79 FEET TO THE WEST LINE OF THE NORTHEAST QUARTER OF SAID SECTION 15;
THENCE SOUTH 00 DEGREES 14 MINUTES 45 SECONDS EAST ALONG SAID WEST LINE, A DISTANCE OF 658.61 FEET;
THENCE SOUTH 89 DEGREES 37 MINUTES 34 SECONDS WEST ALONG SAID NORTH LINE, A DISTANCE OF 2606.93 FEET;
THENCE NORTH 00 DEGREES 39 MINUTES 50 SECONDS WEST, A DISTANCE OF 656.39 FEET;
THENCE NORTH 89 DEGREES 41 MINUTES 23 SECONDS WEST, A DISTANCE OF 1327.00 FEET;
THENCE SOUTH 00 DEGREES 32 MINUTES 17 SECONDS EAST, A DISTANCE OF 1318.88 FEET TO THE SOUTHEAST CORNER OF THE SOUTHWEST QUARTER OF THE NORTHEAST QUARTER OF AFORESAID SECTION 16;
THENCE NORTH 89 DEGREES 57 MINUTES 17 SECONDS WEST ALONG THE SOUTH LINE OF SAID SOUTHWEST QUARTER OF THE NORTHEAST QUARTER, A DISTANCE OF 1329.81 FEET TO THE SOUTHEAST CORNER OF THE NORTHWEST QUARTER OF SAID SECTION 16;
THENCE NORTH 89 DEGREES 44 MINUTES 53 SECONDS WEST ALONG THE SOUTH LINE OF SAID NORTHWEST QUARTER, A DISTANCE OF 1329.81 FEET TO SOUTHWEST CORNER OF THE EAST HALF OF SAID NORTHWEST QUARTER;
THENCE NORTH 00 DEGREES 17 MINUTES 25 SECONDS WEST ALONG THE WEST LINE OF SAID EAST HALF, A DISTANCE OF 2650.70 FEET TO THE POINT OF BEGINNING; ALSO INCLUDING PORTIONS OF ALL IMMEDIATELY ABUTTING AND PREVIOUSLY DEDICATED ROAD RIGHTS-OF-WAY OF PATTON ROAD, HAHN ROAD, COUNTY ROAD DM AND WIBU ROAD THAT ARE NOT PREVIOUSLY ANNEXED.

LANDS TO BE ANNEXED TO THE VILLAGE OF DeFOREST

PARTS OF SECTIONS 10, 11, 14, 15 AND 16 ALL IN TOWNSHIP 9 NORTH, RANGE 9 EAST, IN THE TOWN OF VIENNA, DANE COUNTY, WISCONSIN, MORE PARTICULARLY DESCRIBED AS FOLLOWS:

ALL BEARINGS AND DISTANCES ARE OBSERVED, GRID MEASUREMENTS TIED TO DANE COUNTY WISCORS HORIZONTAL DATUM.

COMMENCING AT A FOUND MAG NAIL WITH WASHER AT THE NORTHWEST CORNER OF THE NORTHWEST QUARTER OF SAID SECTION 16;
THENCE SOUTH 89 DEGREES 31 MINUTES 34 SECONDS EAST ALONG THE NORTH LINE OF THE NORTHWEST QUARTER OF SAID SECTION 16, A DISTANCE OF 1324.19 FEET TO THE NORTHEAST CORNER OF THE WEST HALF OF SAID NORTHWEST QUARTER FOR A POINT OF BEGINNING;
THENCE CONTINUING SOUTH 89 DEGREES 31 MINUTES 34 SECONDS EAST ALONG SAID NORTH LINE, A DISTANCE OF 1324.19 FEET TO A FOUND SURVEY SPIKE AT THE NORTHWEST CORNER OF THE NORTHEAST QUARTER OF SAID SECTION 16;
THENCE SOUTH 89 DEGREES 30 MINUTES 59 SECONDS EAST ALONG THE NORTH LINE OF SAID NORTHEAST QUARTER, A DISTANCE OF 2648.43 FEET TO THE NORTHWEST CORNER OF AFORESAID SECTION 15;
THENCE NORTH 89 DEGREES 28 MINUTES 43 SECONDS EAST ALONG THE NORTH LINE OF THE NORTHWEST QUARTER OF SAID SECTION 15, A DISTANCE OF 756.72 FEET;
THENCE NORTH 00 DEGREES 25 MINUTES 33 SECONDS WEST, A DISTANCE OF 1604.40 FEET;
THENCE SOUTH 89 DEGREES 09 MINUTES 20 SECONDS WEST, A DISTANCE OF 85.00 FEET;
THENCE NORTH 00 DEGREES 25 MINUTES 33 SECONDS WEST, A DISTANCE OF 1047.37 FEET TO THE SOUTH LINE OF THE NORTHWEST QUARTER OF AFORESAID SECTION 10;
THENCE SOUTH 89 DEGREES 34 MINUTES 33 SECONDS WEST ALONG SAID SOUTH LINE, A DISTANCE OF 478.71 FEET;
THENCE NORTH 00 DEGREES 59 MINUTES 16 SECONDS WEST, A DISTANCE OF 332.88 FEET;
THENCE SOUTH 89 DEGREES 36 MINUTES 30 SECONDS WEST, A DISTANCE OF 212.36 FEET TO THE WEST LINE OF THE SOUTH HALF OF THE NORTHWEST QUARTER OF SAID SECTION 10;
THENCE NORTH 00 DEGREES 59 MINUTES 53 SECONDS WEST ALONG THE WEST LINE OF SAID SOUTH HALF, A DISTANCE OF 987.12 FEET TO THE NORTHWEST CORNER OF SAID SOUTH HALF;
THENCE NORTH 89 DEGREES 32 MINUTES 35 SECONDS EAST ALONG THE NORTH LINE OF SAID SOUTH HALF, A DISTANCE OF 1280.77 FEET;
THENCE SOUTH 01 DEGREES 51 MINUTES 46 SECONDS EAST, A DISTANCE OF 208.53 FEET;
THENCE NORTH 89 DEGREES 36 MINUTES 35 SECONDS EAST, A DISTANCE OF 350.00 FEET;
THENCE NORTH 01 DEGREES 52 MINUTES 28 SECONDS WEST, A DISTANCE OF 208.94 FEET TO THE NORTH LINE OF THE AFORESAID SOUTH HALF;
THENCE NORTH 89 DEGREES 32 MINUTES 35 SECONDS EAST ALONG THE NORTH LINE OF SAID SOUTH HALF, A DISTANCE OF 992.26 FEET TO NORTHWEST CORNER OF THE SOUTH HALF OF THE NORTHEAST QUARTER OF SAID SECTION 10;
THENCE NORTH 89 DEGREES 32 MINUTES 35 SECONDS EAST ALONG THE NORTH LINE OF SAID SOUTH HALF, A DISTANCE OF 347.15 FEET;
THENCE SOUTH 00 DEGREES 00 MINUTES 38 SECONDS EAST, A DISTANCE OF 329.28 FEET;
THENCE NORTH 87 DEGREES 58 MINUTES 31 SECONDS EAST, A DISTANCE OF 305.81 FEET;
THENCE NORTH 00 DEGREES 22 MINUTES 49 SECONDS WEST, A DISTANCE OF 320.90 FEET TO THE NORTH LINE OF THE AFORESAID SOUTH HALF;
THENCE NORTH 89 DEGREES 32 MINUTES 35 SECONDS EAST ALONG THE NORTH LINE OF SAID SOUTH HALF, A DISTANCE OF 1971.34 FEET TO NORTHWEST CORNER OF THE SOUTH HALF OF THE NORTHWEST QUARTER OF AFORESAID SECTION 11;
THENCE NORTH 89 DEGREES 08 MINUTES 53 SECONDS EAST ALONG THE NORTH LINE OF THE SOUTH HALF OF THE NORTHWEST QUARTER OF SAID SECTION 11, A DISTANCE OF 772.43 FEET TO THE SOUTHWESTERLY RIGHT-OF-WAY LINE OF INTERSTATE 90/94;
THENCE ALONG SAID SOUTHWESTERLY RIGHT-OF-WAY LINE FOR THE FOLLOWING ELEVEN (11) COURSES;

CONTINUED SH6

COPYRIGHT © 2025 WEAVER CONSULTANTS GROUP. ALL RIGHTS RESERVED.

LANDS TO BE ANNEXED TO THE VILLAGE
OF DEFOREST, TOWN OF VIENNA, WI



DRAWN BY: CPV
REVIEWED BY: MDB
DATE: 10/23/2025
FILE: 8077-357-09
ANNEXATION, R2.DWG
SHEET 5 OF 7

PREPARED FOR:
Kimley»Horn
4201 WINFIELD ROAD, SUITE 600
WARRENVILLE, IL 60555

REUSE OF DOCUMENTS
THIS DOCUMENT, AND THE DESIGNS INCORPORATED HEREIN, AS AN INSTRUMENT OF PROFESSIONAL SERVICE, IS THE PROPERTY OF WEAVER CONSULTANTS GROUP, AND IS NOT TO BE USED IN WHOLE OR IN PART, WITHOUT THE WRITTEN AUTHORIZATION OF WEAVER CONSULTANTS GROUP.

LANDS TO BE ANNEXED TO THE VILLAGE OF DeFOREST

- (1) THENCE SOUTH 33 DEGREES 13 MINUTES 18 SECONDS EAST, A DISTANCE OF 2010.63 FEET;
- (2) THENCE SOUTH 34 DEGREES 52 MINUTES 01 SECONDS EAST, A DISTANCE OF 347.22 FEET;
- (3) THENCE SOUTH 33 DEGREES 13 MINUTES 00 SECONDS EAST, A DISTANCE OF 2152.92 FEET;
- (4) THENCE SOUTH 25 DEGREES 36 MINUTES 25 SECONDS EAST, A DISTANCE OF 188.79 FEET;
- (5) THENCE SOUTH 33 DEGREES 13 MINUTES 00 SECONDS EAST, A DISTANCE OF 1571.86 FEET;
- (6) THENCE SOUTH 33 DEGREES 13 MINUTES 00 SECONDS EAST, A DISTANCE OF 1583.95 FEET;
- (7) THENCE SOUTH 16 DEGREES 48 MINUTES 36 SECONDS WEST, A DISTANCE OF 109.76 FEET TO THE BEGINNING OF A NON-TANGENT CURVE;
- (8) THENCE SOUTHERLY ALONG SAID CURVE CONCAVE TO THE EAST HAVING A RADIUS OF 595.88 FEET, ARC DISTANCE OF 427.64 FEET WITH A CHORD BEARING OF SOUTH 03 DEGREES 50 MINUTES 40 SECONDS EAST;
- (9) THENCE SOUTH 12 DEGREES 14 MINUTES 52 SECONDS WEST, A DISTANCE OF 33.18 FEET;
- (10) THENCE SOUTH 64 DEGREES 48 MINUTES 14 SECONDS WEST, A DISTANCE OF 70.40 FEET;
- (11) THENCE SOUTH 88 DEGREES 14 MINUTES 07 SECONDS WEST, A DISTANCE OF 32.14 FEET TO THE EASTERLY LINE OF ZOI LANE;

THENCE ALONG SAID EASTERLY LINE FOR THE FOLLOWING THREE (3) COURSES;

- (1) THENCE NORTH 25 DEGREES 11 MINUTES 22 SECONDS WEST, A DISTANCE OF 52.42 FEET;
- (2) THENCE NORTH 12 DEGREES 54 MINUTES 13 SECONDS WEST, A DISTANCE OF 212.79 FEET;
- (3) THENCE NORTH 00 DEGREES 37 MINUTES 04 SECONDS WEST, A DISTANCE OF 340.52 FEET TO THE SOUTH LINE OF THE NORTH HALF OF AFORESAID SECTION 14;

THENCE SOUTH 89 DEGREES 22 MINUTES 55 SECONDS WEST ALONG SAID SOUTH LINE, A DISTANCE OF 2211.67 FEET TO THE SOUTHEAST CORNER OF THE SOUTHEAST QUARTER OF THE NORTHWEST QUARTER OF SAID SECTION 14;

THENCE NORTH 00 DEGREES 20 MINUTES 56 SECONDS WEST ALONG THE EAST LINE OF SAID SOUTHEAST QUARTER OF THE NORTHWEST QUARTER, A DISTANCE OF 1324.14 FEET TO THE NORTHEAST CORNER OF SAID SOUTHEAST QUARTER OF THE NORTHWEST QUARTER;

THENCE SOUTH 89 DEGREES 21 MINUTES 15 SECONDS WEST ALONG THE NORTH LINE OF SAID SOUTHEAST QUARTER OF THE NORTHWEST QUARTER, A DISTANCE OF 2211.23 FEET TO A LINE 400 FEET EAST OF AND PARALLEL WITH THE WEST LINE OF THE NORTHWEST QUARTER OF SAID SECTION 14;

THENCE NORTH 00 DEGREES 07 MINUTES 31 SECONDS WEST ALONG SAID PARALLEL LINE, A DISTANCE OF 1323.12 FEET TO THE NORTH LINE OF SAID NORTHWEST QUARTER;

THENCE SOUTH 89 DEGREES 19 MINUTES 36 SECONDS WEST ALONG THE NORTH LINE OF SAID NORTHWEST QUARTER, A DISTANCE OF 400.02 FEET TO THE NORTHEAST CORNER OF THE NORTHEAST QUARTER OF THE NORTHEAST QUARTER OF AFORESAID SECTION 15;

THENCE SOUTH 89 DEGREES 25 MINUTES 29 SECONDS WEST ALONG THE NORTH LINE OF SAID NORTHEAST QUARTER OF THE NORTHEAST QUARTER, A DISTANCE OF 1305.19 FEET TO THE NORTHWEST CORNER OF SAID NORTHEAST QUARTER OF THE NORTHEAST QUARTER;

CONTINUED SH7

COPYRIGHT © 2025 WEAVER CONSULTANTS GROUP. ALL RIGHTS RESERVED.

PREPARED FOR:

Kimley»Horn

4201 WINFIELD ROAD, SUITE 600
WARRENVILLE, IL 60555

LANDS TO BE ANNEXED TO THE VILLAGE
OF DEFOREST, TOWN OF VIENNA, WI



DRAWN BY: CPV
REVIEWED BY: MDB
DATE: 10/23/2025
FILE: 8077-357-09
ANNEXATION, R2.DWG
SHEET 6 OF 7

REUSE OF DOCUMENTS
THIS DOCUMENT, AND THE DESIGNS INCORPORATED HEREIN, AS AN INSTRUMENT OF PROFESSIONAL SERVICE, IS THE PROPERTY OF WEAVER CONSULTANTS GROUP. AND IS NOT TO BE USED IN WHOLE OR IN PART, WITHOUT THE WRITTEN AUTHORIZATION OF WEAVER CONSULTANTS GROUP.

LANDS TO BE ANNEXED TO THE VILLAGE OF DeFOREST

THENCE SOUTH 00 DEGREES 11 MINUTES 07 SECONDS EAST ALONG THE WEST LINE OF SAID NORTHEAST QUARTER OF THE NORTHEAST QUARTER, A DISTANCE OF 1320.07 FEET TO SOUTHEAST CORNER OF THE NORTHWEST QUARTER OF THE NORTHEAST QUARTER SAID SECTION 15;

THENCE SOUTH 89 DEGREES 32 MINUTES 59 SECONDS WEST ALONG THE SOUTH LINE OF SAID NORTHWEST QUARTER OF THE NORTHEAST QUARTER, A DISTANCE OF 1303.79 FEET TO THE WEST LINE OF THE NORTHEAST QUARTER OF SAID SECTION 15;

THENCE SOUTH 00 DEGREES 14 MINUTES 45 SECONDS EAST ALONG SAID WEST LINE, A DISTANCE OF 658.61 FEET;

THENCE SOUTH 89 DEGREES 37 MINUTES 34 SECONDS WEST ALONG SAID NORTH LINE, A DISTANCE OF 2606.93 FEET;

THENCE NORTH 00 DEGREES 39 MINUTES 50 SECONDS WEST, A DISTANCE OF 656.39 FEET;

THENCE NORTH 89 DEGREES 41 MINUTES 23 SECONDS WEST, A DISTANCE OF 1327.00 FEET;

THENCE SOUTH 00 DEGREES 32 MINUTES 17 SECONDS EAST, A DISTANCE OF 1318.88 FEET TO THE SOUTHEAST CORNER OF THE SOUTHWEST QUARTER OF THE NORTHEAST QUARTER OF AFORESAID SECTION 16;

THENCE NORTH 89 DEGREES 57 MINUTES 17 SECONDS WEST ALONG THE SOUTH LINE OF SAID SOUTHWEST QUARTER OF THE NORTHEAST QUARTER, A DISTANCE OF 1329.81 FEET TO THE SOUTHEAST CORNER OF THE NORTHWEST QUARTER OF SAID SECTION 16;

THENCE NORTH 89 DEGREES 44 MINUTES 53 SECONDS WEST ALONG THE SOUTH LINE OF SAID NORTHWEST QUARTER, A DISTANCE OF 1329.81 FEET TO SOUTHWEST CORNER OF THE EAST HALF OF SAID NORTHWEST QUARTER;

THENCE NORTH 00 DEGREES 17 MINUTES 25 SECONDS WEST ALONG THE WEST LINE OF SAID EAST HALF, A DISTANCE OF 2650.70 FEET TO THE POINT OF BEGINNING;

ALSO INCLUDING PORTIONS OF ALL IMMEDIATELY ABUTTING AND PREVIOUSLY DEDICATED ROAD RIGHTS-OF-WAY OF PATTON ROAD, HAHN ROAD, COUNTY ROAD DM AND WIBU ROAD THAT ARE NOT PREVIOUSLY ANNEXED.

COPYRIGHT © 2025 WEAVER CONSULTANTS GROUP. ALL RIGHTS RESERVED.

PREPARED FOR:

Kimley»Horn

4201 WINFIELD ROAD, SUITE 600
WARRENVILLE, IL 60555



**Weaver
Consultants
Group**

NAPERVILLE, ILLINOIS
(630) 717-4848 www.wcgrp.com

LANDS TO BE ANNEXED TO THE VILLAGE
OF DEFOREST, TOWN OF VIENNA, WI

REUSE OF DOCUMENTS
THIS DOCUMENT, AND THE DESIGNS INCORPORATED HEREIN, AS AN INSTRUMENT OF PROFESSIONAL SERVICE, IS THE
PROPERTY OF WEAVER CONSULTANTS GROUP, AND IS NOT TO BE USED IN WHOLE OR IN PART, WITHOUT THE WRITTEN
AUTHORIZATION OF WEAVER CONSULTANTS GROUP.

DRAWN BY: CPV

REVIEWED BY: MDB

DATE: 10/23/2025

FILE: 8077-357-09

ANNEXATION, R2.DWG

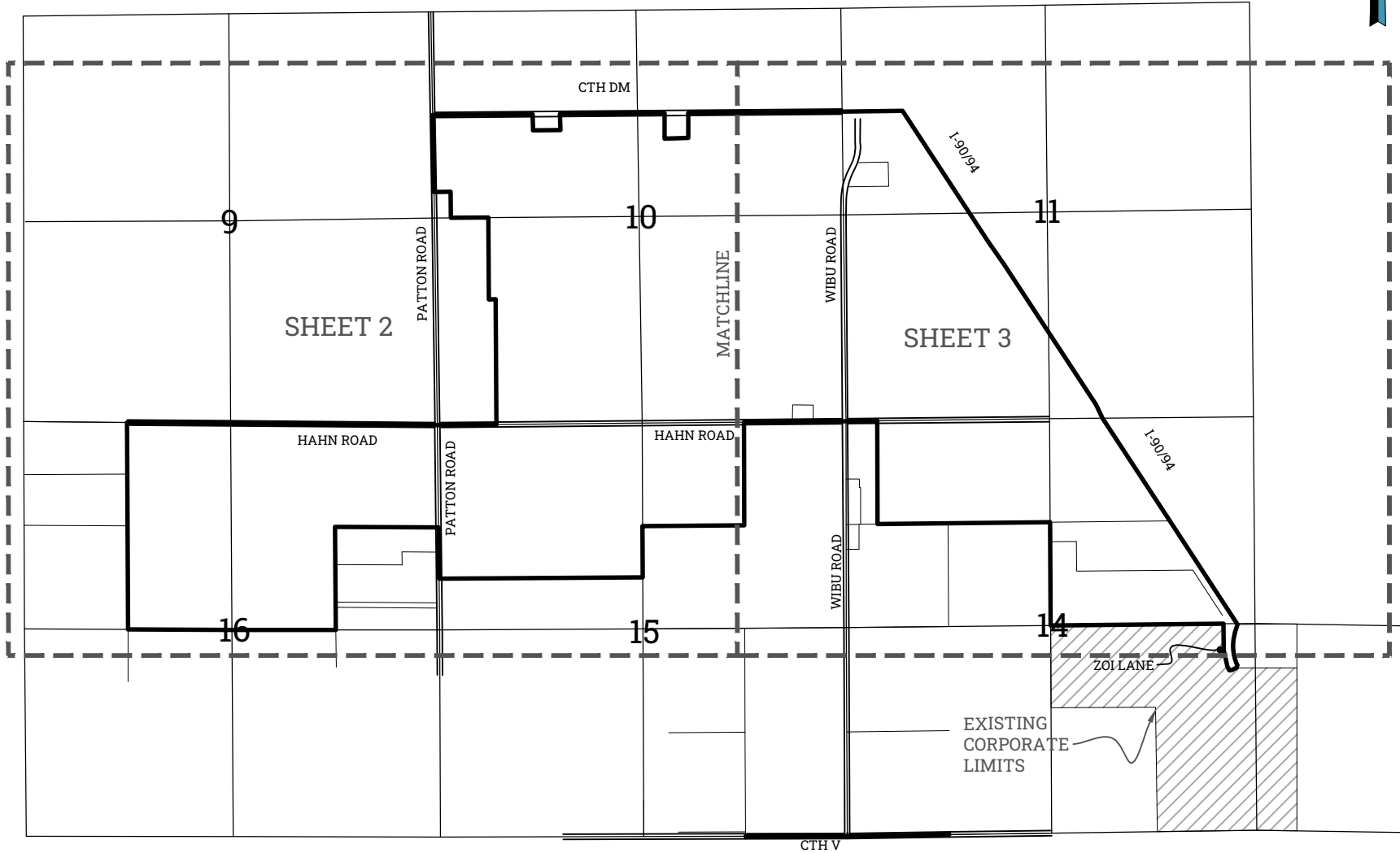
SHEET 7 OF 7

LANDS TO BE ANNEXED TO THE VILLAGE OF DeFOREST

PART OF SECTIONS 10, 11, 14, 15 AND 16 ALL IN TOWNSHIP 9 NORTH, RANGE 9
EAST, IN THE TOWN OF VIENNA, DANE COUNTY, WISCONSIN



KEY MAP



COPYRIGHT © 2025 WEAVER CONSULTANTS GROUP. ALL RIGHTS RESERVED.

Weaver Consultants Group
NAPERVILLE, ILLINOIS
(630) 717-4848 www.wcgrp.com

LANDS TO BE ANNEXED TO THE VILLAGE
OF DEFOREST, TOWN OF VIENNA, WI

REUSE OF DOCUMENTS
THIS DOCUMENT, AND THE DESIGNS INCORPORATED HEREIN, AS AN INSTRUMENT OF PROFESSIONAL SERVICE, IS THE
PROPERTY OF WEAVER CONSULTANTS GROUP, AND IS NOT TO BE USED IN WHOLE OR IN PART, WITHOUT THE WRITTEN
AUTHORIZATION OF WEAVER CONSULTANTS GROUP.

PREPARED FOR:

Kimley»Horn
4201 WINFIELD ROAD, SUITE 600
WARRENVILLE, IL 60555

DRAWN BY:	CPV
REVIEWED BY:	MDB
DATE:	10/23/2025
FILE:	8077-357-09
ANNUATION PLDNG	8077-357-09
SHEET 1 OF 7	

THIS IS TO CERTIFY THAT THE INFORMATION SHOWN HEREON IS CORRECT
TO THE BEST OF MY KNOWLEDGE AND BELIEF.

SIGNED AND SEALED OCTOBER 23, 2025
MICHAEL D. BYTNER (S-2541)

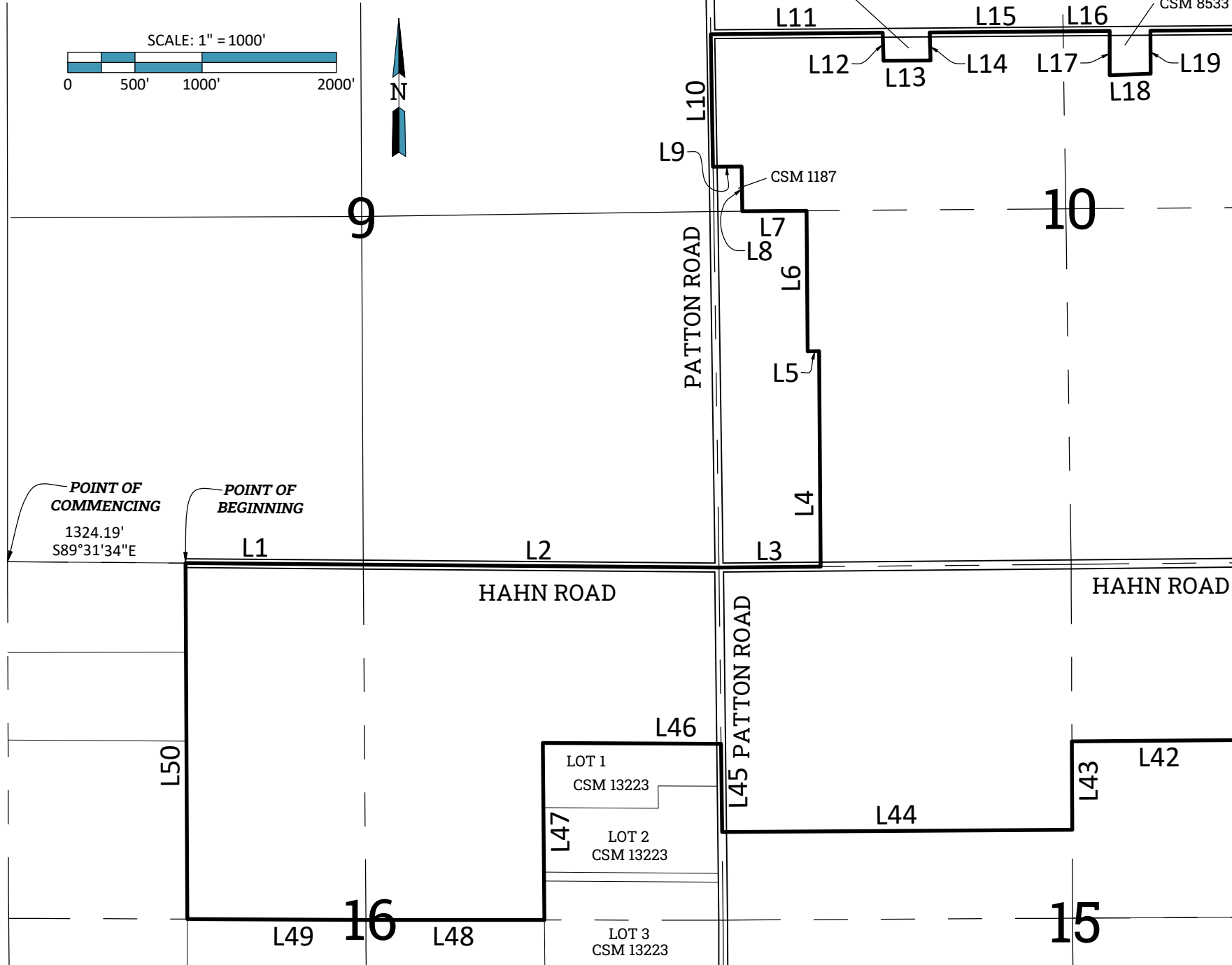


No.	DATE	REVISION DESCRIPTION
1.	10/08/2025	ORIGINAL DRAFT
2.	10/09/2025	REVISE PER CLIENT REVIEW
3.	10/17/2025	REVISE PER CLIENT REVIEW
4.	10/21/2025	REVISE PER CLIENT REVIEW
5.	10/22/2025	REVISE PER CITY REVIEW
6.	10/23/2025	REVISE PER CLIENT REVIEW

LANDS TO BE ANNEXED TO THE VILLAGE OF DeFOREST

PART OF SECTIONS 10, 11, 14, 15 AND 16 ALL IN TOWNSHIP 9 NORTH, RANGE 9
EAST, IN THE TOWN OF VIENNA, DANE COUNTY, WISCONSIN

SCALE: 1" = 1000'



DRAWN BY:	CPV
REVIEWED BY:	MDB
DATE:	10/23/2025
FILE:	8077-357-09
ANNEXATION: R2.DWG	
SHEET 2 OF 7	

Weaver Consultants Group
NAPERVILLE, ILLINOIS
(630) 717-4848 www.wcgrp.com

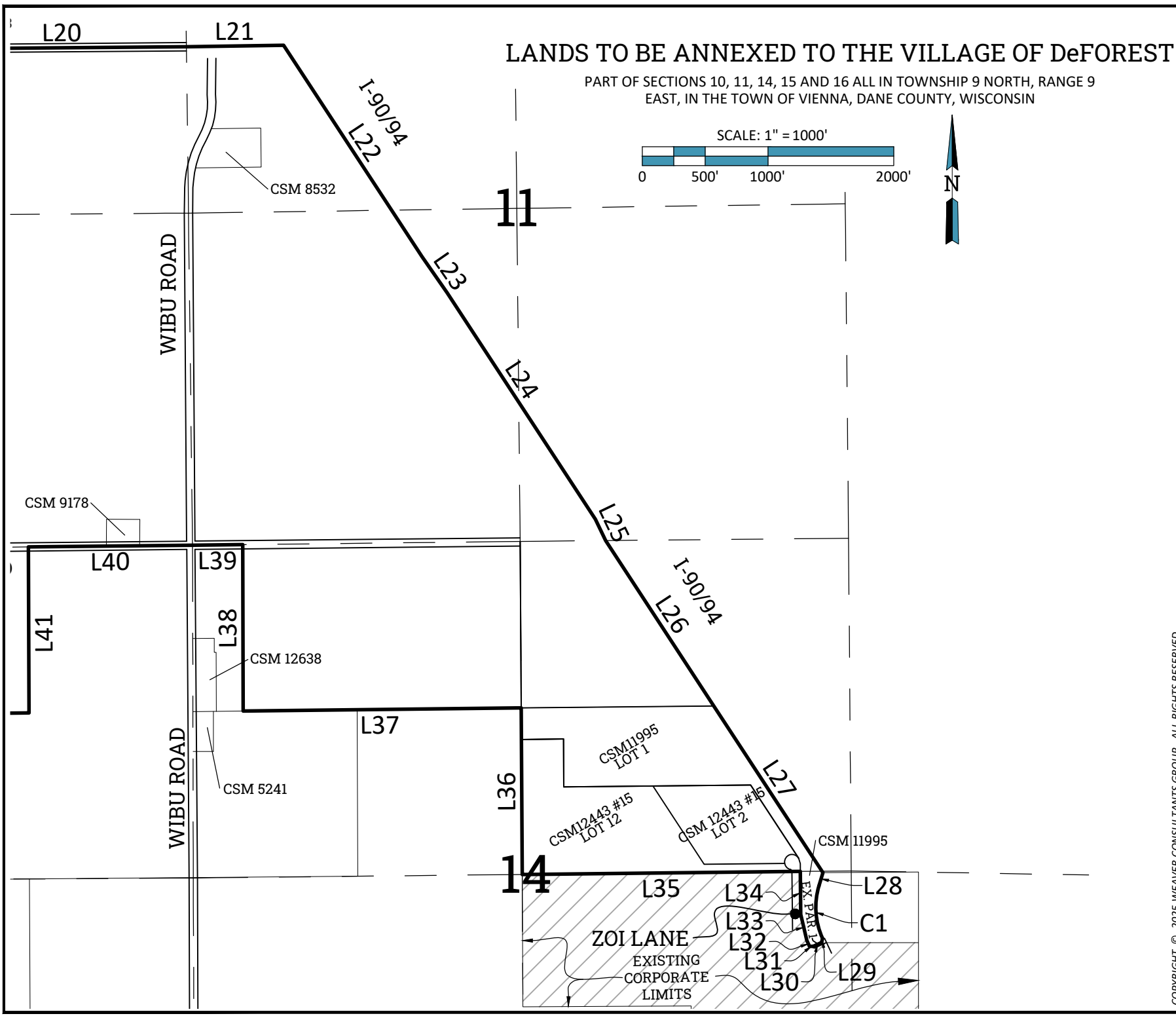
LANDS TO BE ANNEXED TO THE VILLAGE
OF DEFOREST, TOWN OF VIENNA, WI

REUSE OF DOCUMENTS
THIS DOCUMENT, AND THE DESIGNS INCORPORATED HEREIN, AS AN INSTRUMENT OF PROFESSIONAL SERVICE, IS THE
PROPERTY OF WEAVER CONSULTANTS GROUP, AND IS NOT TO BE USED IN WHOLE OR IN PART, WITHOUT THE WRITTEN
AUTHORIZATION OF WEAVER CONSULTANTS GROUP.

PREPARED FOR:

Kimley»Horn

4201 WINFIELD ROAD, SUITE 600
WARRENVILLE, IL 60555



DRAWN BY:	CPV
REVIEWED BY:	MOB
DATE:	10/23/2025
FILE:	8077-357-09
ANNEXATION R2.DWG	
SHEET 3 OF 7	

Weaver Consultants Group
 NAPERVILLE, ILLINOIS
 (630) 717-4848 www.wcgrp.com

LANDS TO BE ANNEXED TO THE VILLAGE OF DEFOREST, TOWN OF VIENNA, WI

REUSE OF DOCUMENTS
 THIS DOCUMENT, AND THE DESIGNS INCORPORATED HEREIN, AS AN INSTRUMENT OF PROFESSIONAL SERVICE, IS THE PROPERTY OF WEAVER CONSULTANTS GROUP. IT IS TO BE USED ONLY FOR THE PROJECT AND SITE SPECIFICALLY AUTHORIZED BY WEAVER CONSULTANTS GROUP.

PREPARED FOR:
Kimley»Horn
 4201 WINFIELD ROAD, SUITE 600
 WARRENVILLE, IL 60555

COPYRIGHT © 2025 WEAVER CONSULTANTS GROUP. ALL RIGHTS RESERVED.

LANDS TO BE ANNEXED TO THE VILLAGE OF DeFOREST

PART OF SECTIONS 10, 11, 14, 15 AND 16 ALL IN TOWNSHIP 9 NORTH, RANGE 9
EAST, IN THE TOWN OF VIENNA, DANE COUNTY, WISCONSIN

LINE TABLE		
LINE #	LENGTH	DIRECTION
L1	1324.19'	S89°31'34"E
L2	2648.43'	S89°30'59"E
L3	756.72'	N89°28'43"E
L4	1604.40'	N00°25'33"W
L5	85.00'	S89°09'20"W
L6	1047.37'	N00°25'33"W
L7	478.71'	S89°34'33"W
L8	332.88'	N00°59'16"W
L9	212.36'	S89°36'30"W
L10	987.12'	N00°59'53"W
L11	1280.77'	N89°32'35"E
L12	208.53'	S01°51'46"E
L13	350.00'	N89°36'35"E
L14	208.94'	N01°52'28"W
L15	992.26'	N89°32'35"E
L16	347.15'	N89°32'35"E
L17	329.28'	S00°00'38"E

LINE TABLE		
LINE #	LENGTH	DIRECTION
L18	305.81'	N87°58'31"E
L19	320.90'	N00°22'49"W
L20	1971.34'	N89°32'35"E
L21	772.43'	N89°08'53"E
L22	2010.63'	S33°13'18"E
L23	347.22'	S34°52'01"E
L24	2152.92'	S33°13'00"E
L25	188.79'	S25°36'25"E
L26	1571.86'	S33°13'00"E
L27	1583.95'	S33°13'00"E
L28	109.76'	S16°48'36"W
L29	33.18'	S12°14'52"W
L30	70.40'	S64°48'14"W
L31	32.14'	S88°14'07"W
L32	52.42'	N25°11'22"W
L33	212.79'	N12°54'13"W
L34	340.52'	N00°37'04"W

LINE TABLE		
LINE #	LENGTH	DIRECTION
L35	2211.67'	S89°22'55"W
L36	1324.14'	N00°20'56"W
L37	2211.23'	S89°21'15"W
L38	1323.12'	N00°07'31"W
L39	400.02'	S89°19'36"W
L40	1305.19'	S89°25'29"W
L41	1320.07'	S00°11'07"E
L42	1303.79'	S89°32'59"W
L43	658.61'	S00°14'45"E
L44	2606.93'	S89°37'34"W
L45	656.39'	N00°39'50"W
L46	1327.00'	N89°41'23"W
L47	1318.88'	S00°32'17"E
L48	1329.81'	N89°57'17"W
L49	1329.81'	N89°44'53"W
L50	2650.70'	N00°17'25"W

CURVE TABLE				
CURVE #	ARC LENGTH	RADIUS	CHORD DIRECTION	CHORD LENGTH
C1	427.64'	595.88'	S03°50'40"E	418.52'

COPYRIGHT © 2025 WEAVER CONSULTANTS GROUP. ALL RIGHTS RESERVED.

DRAWN BY: CPV
REVIEWED BY: MDB
DATE: 10/23/2025
FILE: 8077-357-09
ANNEXATION, I2.DWG
8077357-09
SHEET 4 OF 7



LANDS TO BE ANNEXED TO THE VILLAGE
OF DEFOREST, TOWN OF VIENNA, WI

REUSE OF DOCUMENTS
THIS DOCUMENT, AND THE DESIGNS INCORPORATED HEREIN, AS AN INSTRUMENT OF PROFESSIONAL SERVICE, IS THE
PROPERTY OF WEAVER CONSULTANTS GROUP, AND IS NOT TO BE USED IN WHOLE OR IN PART, WITHOUT THE WRITTEN
AUTHORIZATION OF WEAVER CONSULTANTS GROUP.

PREPARED FOR:
Kimley»Horn
4201 WINFIELD ROAD, SUITE 600
WARRENVILLE, IL 60555



Outlook

FW: Proposed Snyder Revocable Living Trust Annexation (MBR No. 14813) and Harris Annexation (MBR No. 14816)

From Deborah C. Tomczyk <dtomczyk@reinhardtlaw.com>**Date** Fri 12/5/2025 1:07 PM**To** Schmidtke, Erich J - DOA <Erich.Schmidtke@wisconsin.gov>; Vowels-Katter, Bradley - DOA <bradley.vowelskatter@wisconsin.gov>**Cc** Clark, Kathleen L - MUN <clerk@viennawi.gov>; Callista Lundgren <lundgrenc@deforestwi.gov>; Allen D. Reuter <areuter@rwelaw.net> 1 attachment (119 KB)

[Untitled].pdf;

CAUTION: This email originated from outside the organization.**Do not click links or open attachments unless you recognize the sender and know the content is safe.**

Gentlemen: At a meeting last night (see the attached PDF), the Village of DeForest Board rejected (1) the Snyder Revocable Living Trust annexation of 1135 acres (MBR No. 14813) and (2) the Harris annexation of 435 acres (MBR No. 14816). As the Memo in the attached pdf explains, the Village prefers to have the two petitions combined into a single petition and the Village Board's action should conclude the processing for both MBR Nos. 14813 and 14816. The petitioners respect the Village's direction and will no longer pursue MBR No. 14813 and MBR No. 14816. No further processing of MBR No. 14813 or MBR No. 14816 is required from DOA, the Town or the Village. We expect to resubmit a single combined petition before year end. Please advise if you have questions or comments.

Best, Debby

Deborah C. TomczykReinhart Boerner Van Deuren s.c.
1000 North Water Street, Suite 1700, Milwaukee, WI 53202O: 414-298-8331
dtomczyk@reinhardtlaw.com | reinhardtlaw.com | Bio | vCard

From: Schmidtke, Erich J - DOA <Erich.Schmidtke@wisconsin.gov>**Sent:** Thursday, November 20, 2025 2:13 PM**To:** Deborah C. Tomczyk <dtomczyk@reinhardtlaw.com>**Cc:** Clark, Kathleen L - MUN <clerk@viennawi.gov>; Callista Lundgren <lundgrenc@deforestwi.gov>; Allen D. Reuter <areuter@rwelaw.net>**Subject:** [EXTERNAL] RE: Proposed Snyder Revocable Living Trust Annexation (MBR No. 14813)

Hello Debby,

Having received your request to suspend our review of the proposed Snyder Revocable Living Trust Annexation to Deforest, we will wait to issue our determination and will suspend our review until we hear back from you that you are ready to have our review start back up.

Thank you,
Erich



Erich Schmidtke
Municipal Boundary Review - DOA
101 East Wilson Street
PO Box 1645, Madison, WI 53701
(608) 264-6102
erich.schmidtke@wisconsin.gov
<http://doa.wi.gov/municipalboundaryreview>

From: Deborah C. Tomczyk <dtomczyk@reinhartlaw.com>

Sent: Thursday, November 20, 2025 11:57 AM

To: Schmidtke, Erich J - DOA <Erich.Schmidtke@wisconsin.gov>

Cc: Clark, Kathleen L - MUN <clerk@viennawi.gov>; Callista Lundgren <lundgrenc@deforestwi.gov>; Allen D. Reuter <areuter@rwelaw.net>

Subject: RE: Proposed Snyder Revocable Living Trust Annexation (MBR No. 14813)

CAUTION: This email originated from outside the organization.

Do not click links or open attachments unless you recognize the sender and know the content is safe.

Erich:

As DOA just received the questionnaire from the Village of DeForest this week and the Town of Vienna's questionnaire is due today but not yet sent, please suspend DOA's public interest review of MBR No. 14813 until the petitioners have reviewed and had a chance to respond to both questionnaires. Please also forward anything DOA receives from the Town at your earliest convenience.

We appreciate your cooperation.

Best, Debby

Deborah C. Tomczyk

Reinhart Boerner Van Deuren s.c.
1000 North Water Street, Suite 1700, Milwaukee, WI 53202

O: 414-298-8331
dtomczyk@reinhartlaw.com | reinhartlaw.com | Bio | vCard

Reinhart

From: Schmidtke, Erich J - DOA <Erich.Schmidtke@wisconsin.gov>

Sent: Friday, October 31, 2025 5:48 PM

To: Clark, Kathleen L - MUN <clerk@viennawi.gov>; Callista Lundgren <lundgrenc@deforestwi.gov>

Cc: Deborah C. Tomczyk <dtomczyk@reinhardtlaw.com>

Subject: [EXTERNAL] Proposed Snyder Revocable Living Trust Annexation

Hello Callista and Kathleen,

The Department has received a proposed annexation petition to transfer territory from the Town to the Village for our public interest review under s. 66.0217(6), Wis. Stats. Attached is the petition as well as a letter with additional details and a questionnaire for each of your communities to complete.

Thank you, and let me know if you have any questions.

Erich



Erich Schmidtke
Municipal Boundary Review - DOA
101 East Wilson Street
PO Box 1645, Madison, WI 53701
(608) 264-6102
erich.schmidtke@wisconsin.gov
<http://doa.wi.gov/municipalboundaryreview>

This e-mail and any attachments may contain privileged or confidential information. This e-mail is intended solely for the use of the individual or entity to which it is addressed. If you are not the intended recipient of this e-mail, you are hereby notified that any copying, distribution, dissemination or action taken in relation to the contents of this e-mail and any of its attachments is strictly prohibited and may be unlawful. If you have received this e-mail in error, please notify the sender immediately and permanently delete the original e-mail and destroy any copies or printouts of this e-mail as well as any attachments. To the extent representations are made herein concerning matters of a client of the firm, be advised that such representations are not those of the client and do not purport to bind them. This communication is not intended to constitute an electronic signature unless expressly stated otherwise.

Village of DeForest
SPECIAL VILLAGE BOARD MEETING
Thursday December 4, 2025 12/4/2025 5:00:00 PM
ZOOM ONLY

<https://us06web.zoom.us/j/83045654646?pwd=25EDaZWFFDqzFbldjGQwam3gyDOTad.1>
Meeting ID: 830 4565 4646 Passcode: 350877 Phone: (301) 715-8592

Agenda

- 1. Call Meeting to Order**
- 2. Roll Call**
- 3. Announcements**
- 4. New Business**
 - 4.1. Discussion and Potential Action to Reject Petition for Direct Annexation by One-Half Approval of 1,135 Acres (MBR #14813).
 - 4.2. Discussion and Potential Action to Reject Petition for Direct Annexation by One-Half Approval of 435 Acres (MBR #14816).
- 5. Any Other Business That Lawfully Comes Before the Board**
- 6. Adjournment**

Any person who has a qualifying disability as defined by the Americans With Disabilities Act that requires the meeting or materials at the meeting to be in an accessible location or format must contact the DeForest Village Office at 846-6751, 120 S. Stevenson Street by 2:00 p.m. the Friday prior to the meeting so that any necessary arrangements can be made to accommodate each request. Wisconsin State Statute requires all agenda's for committee, commission and Board meetings to be posted 24 hours prior to the meeting date and time. Other members of governmental bodies, committees, commissions and boards may be present to observe and gather information in regards to the agenda items as listed. The only action taken will be that of the Board members present.

Posted:

DeForest Village Hall

DeForest Public Safety

www.deforestwi.gov

Village Board Memo

Meeting Date: December 4, 2025

The Items:

1. Discussion and Potential action to Reject Petition for Direct Annexation by One-Half Approval of 1,135 Acres (MBR #14813).
2. Discussion and Potential action to Reject Petition for Direct Annexation by One-Half Approval of 435 Acres (MBR #14816).

Lead Staff: Bill Chang, Village Administrator and Allen Reuter, Village Attorney

Author: Bill Chang

Attachments:

1. Petition for Direct Annexation by One-Half Approval of 1,135 Acres (MBR #14813).
2. Petition for Direct Annexation by One-Half Approval of 435 Acres (MBR #14816).

Requested Village Board Focus: Action

Summary of Issue: Separate petitions create challenges for staff review due to the size and scope of the project. Since the separate petitions are intended for one development project, it is preferred that the two annexations petitions be combined so that the Village Staff can better understand, analyze, and communicate the full project scope and impacts when reviewing related downstream applications and for setting future meetings. In analyzing potential traffic and utility routes, noise mitigation measures and development and operational restrictions that may be necessary, it would be more efficient to approach the review with the knowledge that the land proposed for the project will be annexed or rejected in its entirety.

Background:

On October 31, 2025, a Notice of Intent to Circulate Petition for Annexation of Territory from Town of Vienna to Village of DeForest was published by Peter E. Snyder and Alla Snyder Revocable Living Trust. A corresponding Petition for Direct Annexation by One-Half Approval of 1,135 acres was submitted to the Village Clerk on November 14th. Additionally, Village Staff received a corresponding Comprehensive Plan Amendment Application and a Rezoning Application limited to the land area in the petition.

On November 21st, the Village received a copy of a Notice of Intent to Circulate Petition for Annexation of Territory from Town of Vienna to Village of DeForest that was published by Stewart L. Harris and Cheryl A Harris. A corresponding Petition for Direct Annexation by One-Half Approval of 435 acres was submitted to the Village Clerk on December 3rd. As of writing

this memorandum, Village Staff have not yet received a corresponding Comprehensive Plan Amendment Application and Rezoning Application for this area of land.

Recommendation (including rationale): Village Staff have communicated with QTS Data Centers (“Developer”) its preference to combine the two petitions and any future land entitlement applications so that they can more efficiently manage the review process of the project in its entirety. Village Staff also believe that they cannot make appropriate recommendations and that the approving bodies cannot make informed decisions unless the Village understands the full scope of the project.

Procedurally, there is no method for combining the annexation petitions. Once the annexation process starts (i.e. Notice of Intent published), the process must take its course, until either a decision is made by the government entity, or the statutory deadline expires.

Therefore, it is Village Staff’s recommendation that the Village Board reject both the Petition for Direct Annexation by One-Half Approval of 1,135 Acres (MBR #14813) and the Petition for Direct Annexation by One-Half Approval of 435 Acres (MBR #14816). This effectively closes the process on these petitions.

The properties owners then have the option to notice circulation of a new petition to annex and file a new annexation petition which includes the collective properties of the two prior petitions (or any modification they desire). The land entitlement applications should then include data, exhibits, and schedules explaining the entirety of the project.

Anticipated Next Steps: No further action unless a new annexation petition is filed.

Input From Others: Al Reuter – Village Attorney, Alex Allon – Community Development Director.



Outlook

Immediate State Intervention Needed to Stop the Annexation of Vienna Land into DeForest

From Kim DuBois <dubois1195@gmail.com>

Date Tue 11/18/2025 10:44 AM

To WI Municipal Boundary Review <wimunicipalboundaryreview@wisconsin.gov>

CAUTION: This email originated from outside the organization.

Do not click links or open attachments unless you recognize the sender and know the content is safe.

Dear Wisconsin Department of Administration,

I am writing to urgently request that the Department—and specifically the Municipal Boundary Review program—intervene to halt the proposed annexation of Town of Vienna land into the Village of DeForest.

This annexation is being advanced at a pace and scale entirely inappropriate for a decision with such far-reaching and irreversible consequences. The public interest is not being protected.

This is not a routine boundary adjustment. This is a deliberate attempt to fast-track a major industrial project by absorbing land that has been responsibly managed by Vienna for decades. Allowing this annexation to proceed without rigorous, state-level scrutiny would set a dangerous precedent—one in which municipal expansion is used as a shortcut to bypass community opposition, environmental responsibility, and regional planning.

The annexation threatens shared regional resources and undermines responsible land management.

The land in question is productive agricultural acreage and part of a shared groundwater system that sustains homes, farms, and surrounding municipalities. The proposed annexation would strip Vienna of control over land essential to its long-term planning and impose consequences on communities that will have no meaningful say in what follows.

The infrastructure burdens and energy demands of the planned development will spill far beyond DeForest.

A large-scale data center would require extraordinary electrical capacity and expensive infrastructure expansion. These costs—and the strain on the grid—will not be contained within DeForest's borders.

Neighboring communities will bear the effects while being completely cut out of the decision-making process. This is unacceptable and inconsistent with principles of fair, regional governance.

Water impacts alone warrant immediate intervention.

The groundwater draw for data center cooling is substantial and long-term. Approving annexation before a full hydrological and environmental impact review is conducted is reckless. Changing the boundary line does not change where the water comes from; the aquifer is a shared resource, and its protection is a statewide responsibility.

The annexation would permanently destroy farmland and open space for a project offering minimal public benefit.

After construction, a data center employs only a handful of people. The economic return to the region is negligible compared to the permanent loss of agricultural land, the environmental impact, and the burdens placed on infrastructure, water, and energy systems. The public loses far more than it gains. The process itself raises serious concerns.

The speed at which this annexation is being pushed forward suggests a deliberate attempt to avoid scrutiny. This alone is sufficient grounds for the Department to pause, review, and, if warranted, prevent the annexation from moving ahead. Wisconsin's municipal boundary laws exist specifically to prevent decisions like this from being rushed through without proper oversight.

For these reasons, I am urging the Department of Administration to take immediate action to stop or delay this annexation until a comprehensive, transparent, and statewide-impact analysis is completed. Anything less would fail to protect the public interest and would expose Vienna, DeForest, and the broader region to long-term harm.

Thank you for your immediate attention. I look forward to the Department's prompt response and clarification of the steps it will take to ensure this annexation does not proceed unchecked.

Thank you,
Kim DuBois
803 Pheasant Lane, DeForest Wi
608-630-6799



Outlook

Immediate State Intervention Needed to Stop the Annexation of Vienna Land into DeForest

From Lydia Reid <lreid91@gmail.com>

Date Tue 11/18/2025 9:22 AM

To WI Municipal Boundary Review <wimunicipalboundaryreview@wisconsin.gov>

CAUTION: This email originated from outside the organization.

Do not click links or open attachments unless you recognize the sender and know the content is safe.

Dear Wisconsin Department of Administration,

I am writing to urgently request that the Department—and specifically the Municipal Boundary Review program—intervene to halt the proposed annexation of Town of Vienna land into the Village of DeForest.

This annexation is being advanced at a pace and scale entirely inappropriate for a decision with such far-reaching and irreversible consequences. The public interest is not being protected.

This is not a routine boundary adjustment. This is a deliberate attempt to fast-track a major industrial project by absorbing land that has been responsibly managed by Vienna for decades. Allowing this annexation to proceed without rigorous, state-level scrutiny would set a dangerous precedent—one in which municipal expansion is used as a shortcut to bypass community opposition, environmental responsibility, and regional planning.

The annexation threatens shared regional resources and undermines responsible land management.

The land in question is productive agricultural acreage and part of a shared groundwater system that sustains homes, farms, and surrounding municipalities. The proposed annexation would strip Vienna of control over land essential to its long-term planning and impose consequences on communities that will have no meaningful say in what follows.

The infrastructure burdens and energy demands of the planned development will spill far beyond DeForest.

A large-scale data center would require extraordinary electrical capacity and expensive infrastructure expansion. These costs—and the strain on the grid—will not be contained within DeForest's borders.

Neighboring communities will bear the effects while being completely cut out of the decision-making process. This is unacceptable and inconsistent with principles of fair, regional governance. Water impacts alone warrant immediate intervention.

The groundwater draw for data center cooling is substantial and long-term. Approving annexation

before a full hydrological and environmental impact review is conducted is reckless. Changing the boundary line does not change where the water comes from; the aquifer is a shared resource, and its protection is a statewide responsibility.

The annexation would permanently destroy farmland and open space for a project offering minimal public benefit.

After construction, a data center employs only a handful of people. The economic return to the region is negligible compared to the permanent loss of agricultural land, the environmental impact, and the burdens placed on infrastructure, water, and energy systems. The public loses far more than it gains. The process itself raises serious concerns.

The speed at which this annexation is being pushed forward suggests a deliberate attempt to avoid scrutiny. This alone is sufficient grounds for the Department to pause, review, and, if warranted, prevent the annexation from moving ahead. Wisconsin's municipal boundary laws exist specifically to prevent decisions like this from being rushed through without proper oversight.

For these reasons, I am urging the Department of Administration to take immediate action to stop or delay this annexation until a comprehensive, transparent, and statewide-impact analysis is completed. Anything less would fail to protect the public interest and would expose Vienna, DeForest, and the broader region to long-term harm.

Thank you for your immediate attention. I look forward to the Department's prompt response and clarification of the steps it will take to ensure this annexation does not proceed unchecked.

Sincerely,
Lydia J Reid
818 Woods Glen Court
DeForest, WI 53532
608-658-1513



Outlook

Immediate State Intervention Needed to Stop the Annexation of Vienna Land into DeForest

From Debbie <dlheinreich@charter.net>

Date Tue 11/18/2025 7:00 AM

To WI Municipal Boundary Review <wimunicipalboundaryreview@wisconsin.gov>

CAUTION: This email originated from outside the organization.

Do not click links or open attachments unless you recognize the sender and know the content is safe.

Dear Wisconsin Department of Administration,

I am writing to urgently request that the Department—and specifically the Municipal Boundary Review program—intervene to halt the proposed annexation of Town of Vienna land into the Village of DeForest.

This annexation is being advanced at a pace and scale entirely inappropriate for a decision with such far-reaching and irreversible consequences. The public interest is not being protected.

This is not a routine boundary adjustment. This is a deliberate attempt to fast-track a major industrial project by absorbing land that has been responsibly managed by Vienna for decades. Allowing this annexation to proceed without rigorous, state-level scrutiny would set a dangerous precedent—one in which municipal expansion is used as a shortcut to bypass community opposition, environmental responsibility, and regional planning.

The annexation threatens shared regional resources and undermines responsible land management.

The land in question is productive agricultural acreage and part of a shared groundwater system that sustains homes, farms, and surrounding municipalities. The proposed annexation would strip Vienna of control over land essential to its long-term planning and impose consequences on communities that will have no meaningful say in what follows.

The infrastructure burdens and energy demands of the planned development will spill far beyond DeForest.

A large-scale data center would require extraordinary electrical capacity and expensive infrastructure expansion. These costs—and the strain on the grid—will not be contained within DeForest's borders.

Neighboring communities will bear the effects while being completely cut out of the decision-making process. This is unacceptable and inconsistent with principles of fair, regional governance.

Water impacts alone warrant immediate intervention.

The groundwater draw for data center cooling is substantial and long-term. Approving annexation before a full hydrological and environmental impact review is conducted is reckless. Changing the boundary line does not change where the water comes from; the aquifer is a shared resource, and its protection is a statewide responsibility.

The annexation would permanently destroy farmland and open space for a project offering minimal public benefit.

After construction, a data center employs only a handful of people. The economic return to the region is negligible compared to the permanent loss of agricultural land, the environmental impact, and the burdens placed on infrastructure, water, and energy systems. The public loses far more than it gains. The process itself raises serious concerns.

The speed at which this annexation is being pushed forward suggests a deliberate attempt to avoid scrutiny. This alone is sufficient grounds for the Department to pause, review, and, if warranted, prevent the annexation from moving ahead. Wisconsin's municipal boundary laws exist specifically to prevent decisions like this from being rushed through without proper oversight.

For these reasons, I am urging the Department of Administration to take immediate action to stop or delay this annexation until a comprehensive, transparent, and statewide-impact analysis is completed. Anything less would fail to protect the public interest and would expose Vienna, DeForest, and the broader region to long-term harm.

Thank you for your immediate attention. I look forward to the Department's prompt response and clarification of the steps it will take to ensure this annexation does not proceed unchecked.

Sincerely,
Debbie Heinrich
4330 Hawk Trl, DeForest WI 53532
dlheinreich@charter.net



Outlook

Immediate State Intervention Needed to Stop the Annexation of Vienna Land into DeForest

From Daniel Jansen <djansen90@gmail.com>

Date Tue 11/18/2025 6:03 AM

To WI Municipal Boundary Review <wimunicipalboundaryreview@wisconsin.gov>

CAUTION: This email originated from outside the organization.
Do not click links or open attachments unless you recognize the sender and know the content is safe.

Dear Wisconsin Department of Administration,

I am writing to urgently request that the Department—and specifically the Municipal Boundary Review program—intervene to halt the proposed annexation of Town of Vienna land into the Village of DeForest.

This annexation is being advanced at a pace and scale entirely inappropriate for a decision with such far-reaching and irreversible consequences. The public interest is not being protected.

This is not a routine boundary adjustment. This is a deliberate attempt to fast-track a major industrial project by absorbing land that has been responsibly managed by Vienna for decades. Allowing this annexation to proceed without rigorous, state-level scrutiny would set a dangerous precedent—one in which municipal expansion is used as a shortcut to bypass community opposition, environmental responsibility, and regional planning.

The annexation threatens shared regional resources and undermines responsible land management.

The land in question is productive agricultural acreage and part of a shared groundwater system that sustains homes, farms, and surrounding municipalities. The proposed annexation would strip Vienna of control over land essential to its long-term planning and impose consequences on communities that will have no meaningful say in what follows.

The infrastructure burdens and energy demands of the planned development will spill far beyond DeForest.

A large-scale data center would require extraordinary electrical capacity and expensive infrastructure expansion. These costs—and the strain on the grid—will not be contained within DeForest's borders.

Neighboring communities will bear the effects while being completely cut out of the decision-making process. This is unacceptable and inconsistent with principles of fair, regional governance.
Water impacts alone warrant immediate intervention.

The groundwater draw for data center cooling is substantial and long-term. Approving annexation before a full hydrological and environmental impact review is conducted is reckless. Changing the boundary line does not change where the water comes from; the aquifer is a shared resource, and its protection is a statewide responsibility.

The annexation would permanently destroy farmland and open space for a project offering minimal public benefit. After construction, a data center employs only a handful of people. The economic return to the region is negligible compared to the permanent loss of agricultural land, the environmental impact, and the burdens placed on infrastructure, water, and energy systems. The public loses far more than it gains.
The process itself raises serious concerns.

The speed at which this annexation is being pushed forward suggests a deliberate attempt to avoid scrutiny. This alone is sufficient grounds for the Department to pause, review, and, if warranted, prevent the annexation from moving ahead. Wisconsin's municipal boundary laws exist specifically to prevent decisions like this from being rushed through without proper oversight.

For these reasons, I am urging the Department of Administration to take immediate action to stop or delay this annexation until a comprehensive, transparent, and statewide-impact analysis is completed. Anything less would fail to protect the public interest and would expose Vienna, DeForest, and the broader region to long-term harm.

Thank you for your immediate attention. I look forward to the Department's prompt response and clarification of the steps it will take to ensure this annexation does not proceed unchecked.

Sincerely,
Daniel Jansen
818 Woods Glen Court
DeForest, WI 53532
608-658-1513
Sent from my iPad



Outlook

Immediate State Intervention Needed to Stop the Annexation of Vienna Land into DeForest

From Jayna <jayna3111@gmail.com>**Date** Tue 11/18/2025 5:14 AM**To** WI Municipal Boundary Review <wimunicipalboundaryreview@wisconsin.gov>

CAUTION: This email originated from outside the organization.

Do not click links or open attachments unless you recognize the sender and know the content is safe.

Dear Wisconsin Department of Administration,

I am writing to urgently request that the Department—and specifically the Municipal Boundary Review program—intervene to halt the proposed annexation of Town of Vienna land into the Village of DeForest.

This annexation is being advanced at a pace and scale entirely inappropriate for a decision with such far-reaching and irreversible consequences. The public interest is not being protected.

This is not a routine boundary adjustment. This is a deliberate attempt to fast-track a major industrial project by absorbing land that has been responsibly managed by Vienna for decades. Allowing this annexation to proceed without rigorous, state-level scrutiny would set a dangerous precedent—one in which municipal expansion is used as a shortcut to bypass community opposition, environmental responsibility, and regional planning.

The annexation threatens shared regional resources and undermines responsible land management.

The land in question is productive agricultural acreage and part of a shared groundwater system that sustains homes, farms, and surrounding municipalities. The proposed annexation would strip Vienna of control over land essential to its long-term planning and impose consequences on communities that will have no meaningful say in what follows.

The infrastructure burdens and energy demands of the planned development will spill far beyond DeForest.

A large-scale data center would require extraordinary electrical capacity and expensive infrastructure expansion. These costs—and the strain on the grid—will not be contained within DeForest's borders.

Neighboring communities will bear the effects while being completely cut out of the decision-making process. This is unacceptable and inconsistent with principles of fair, regional governance.

Water impacts alone warrant immediate intervention.

The groundwater draw for data center cooling is substantial and long-term. Approving annexation before a full hydrological and environmental impact review is conducted is reckless. Changing the boundary line does not change where the water comes from; the aquifer is a shared resource, and its protection is a statewide responsibility.

The annexation would permanently destroy farmland and open space for a project offering minimal public benefit.

After construction, a data center employs only a handful of people. The economic return to the region is negligible compared to the permanent loss of agricultural land, the environmental impact, and the burdens placed on infrastructure, water, and energy systems. The public loses far more than it gains. The process itself raises serious concerns.

The speed at which this annexation is being pushed forward suggests a deliberate attempt to avoid scrutiny. This alone is sufficient grounds for the Department to pause, review, and, if warranted, prevent the annexation from moving ahead. Wisconsin's municipal boundary laws exist specifically to prevent decisions like this from being rushed through without proper oversight.

For these reasons, I am urging the Department of Administration to take immediate action to stop or delay this annexation until a comprehensive, transparent, and statewide-impact analysis is completed. Anything less would fail to protect the public interest and would expose Vienna, DeForest, and the broader region to long-term harm.

Thank you for your immediate attention. I look forward to the Department's prompt response and clarification of the steps it will take to ensure this annexation does not proceed unchecked.

Sincerely,

Jayna Poster and the Poster Family
816 Acker Parkway
DeForest WI 53532
608-770-2687 jayna3111@gmail.com

Jayna Poster

DAHS Girls Lacrosse Coach

<https://deforest.rschoollteams.com/page/3042>





Outlook

Immediate State Intervention Needed to Stop the Annexation of Vienna Land into DeForest

From Laura K <laura.kazynski@gmail.com>**Date** Tue 11/18/2025 4:36 AM**To** WI Municipal Boundary Review <wimunicipalboundaryreview@wisconsin.gov>

CAUTION: This email originated from outside the organization.

Do not click links or open attachments unless you recognize the sender and know the content is safe.

Dear Wisconsin Department of Administration,

I am writing to urgently request that the Department—and specifically the Municipal Boundary Review program—intervene to halt the proposed annexation of Town of Vienna land into the Village of DeForest.

This annexation is being advanced at a pace and scale entirely inappropriate for a decision with such far-reaching and irreversible consequences. The public interest is not being protected.

This is not a routine boundary adjustment. This is a deliberate attempt to fast-track a major industrial project by absorbing land that has been responsibly managed by Vienna for decades. Allowing this annexation to proceed without rigorous, state-level scrutiny would set a dangerous precedent—one in which municipal expansion is used as a shortcut to bypass community opposition, environmental responsibility, and regional planning.

The annexation threatens shared regional resources and undermines responsible land management.

The land in question is productive agricultural acreage and part of a shared groundwater system that sustains homes, farms, and surrounding municipalities. The proposed annexation would strip Vienna of control over land essential to its long-term planning and impose consequences on communities that will have no meaningful say in what follows.

The infrastructure burdens and energy demands of the planned development will spill far beyond DeForest.

A large-scale data center would require extraordinary electrical capacity and expensive infrastructure expansion. These costs—and the strain on the grid—will not be contained within DeForest’s borders.

Neighboring communities will bear the effects while being completely cut out of the decision-making process. This is unacceptable and inconsistent with principles of fair, regional governance.

Water impacts alone warrant immediate intervention.

The groundwater draw for data center cooling is substantial and long-term. Approving annexation before a full hydrological and environmental impact review is conducted is reckless. Changing the boundary line does not change where the water comes from; the aquifer is a shared resource, and its protection is a statewide responsibility.

The annexation would permanently destroy farmland and open space for a project offering minimal public benefit.

After construction, a data center employs only a handful of people. The economic return to the region is negligible compared to the permanent loss of agricultural land, the environmental impact, and the burdens placed on infrastructure, water, and energy systems. The public loses far more than it gains.

The process itself raises serious concerns.

The speed at which this annexation is being pushed forward suggests a deliberate attempt to avoid scrutiny. This alone is sufficient grounds for the Department to pause, review, and, if warranted, prevent the annexation from moving ahead. Wisconsin’s municipal boundary laws exist specifically to prevent decisions like this from being rushed through without proper oversight.

For these reasons, I am urging the Department of Administration to take immediate action to stop or delay this annexation until a comprehensive, transparent, and statewide-impact analysis is completed. Anything less would fail to protect the public interest and would expose Vienna, DeForest, and the broader region to long-term harm.

Thank you for your immediate attention. I look forward to the Department’s prompt response and clarification of the steps it will take to ensure this annexation does not proceed unchecked.

Sincerely,

Laura Kazynski

4615 Sunburst Dr

DeForest, WI 53532



Outlook

Annexation for data center

From Skyler Quade <skylerlane@yahoo.com>**Date** Mon 11/17/2025 11:43 PM**To** WI Municipal Boundary Review <wimunicipalboundaryreview@wisconsin.gov>

CAUTION: This email originated from outside the organization.

Do not click links or open attachments unless you recognize the sender and know the content is safe.

Hello,

I am writing to express my concern and opposition regarding the annexation of land for the proposed QTS data center in DeForest. As a resident of DeForest raising 3 children, I am very concerned about this proposal. The noise pollution, environmental impact, and burden on our local utilities is at risk and I feel as if adequate consideration is not being given for the residents of DeForest and the surrounding communities. I kindly ask that the voices of those impacted the most by this facility be taken into consideration.

Sincerely,
Skyler Quade

[Sent from Yahoo Mail on Android](#)



Outlook

Immediate State Intervention Needed to Stop the Annexation of Vienna land into Deforest

From Jenna <jlbryant2197@gmail.com>**Date** Mon 11/17/2025 10:09 PM**To** WI Municipal Boundary Review <wimunicipalboundaryreview@wisconsin.gov>**CAUTION: This email originated from outside the organization.****Do not click links or open attachments unless you recognize the sender and know the content is safe.**

Subject: Immediate State Intervention Needed to Stop the Annexation of Vienna Land into DeForest

Dear Wisconsin Department of Administration,

I am writing to urgently request that the Department—and specifically the Municipal Boundary Review program—intervene to halt the proposed annexation of Town of Vienna land into the Village of DeForest.

This annexation is being advanced at a pace and scale entirely inappropriate for a decision with such far-reaching and irreversible consequences. The public interest is not being protected.

This is not a routine boundary adjustment. This is a deliberate attempt to fast-track a major industrial project by absorbing land that has been responsibly managed by Vienna for decades. Allowing this annexation to proceed without rigorous, state-level scrutiny would set a dangerous precedent—one in which municipal expansion is used as a shortcut to bypass community opposition, environmental responsibility, and regional planning.

The annexation threatens shared regional resources and undermines responsible land management.

The land in question is productive agricultural acreage and part of a shared groundwater system that sustains homes, farms, and surrounding municipalities. The proposed annexation would strip Vienna of control over land essential to its long-term planning and impose consequences on communities that will have no meaningful say in what follows.

The infrastructure burdens and energy demands of the planned development will spill far beyond DeForest.

A large-scale data center would require extraordinary electrical capacity and expensive infrastructure expansion. These costs—and the strain on the grid—will not be contained within DeForest's borders.

Neighboring communities will bear the effects while being completely cut out of the decision-making process. This is unacceptable and inconsistent with principles of fair, regional governance. Water impacts alone warrant immediate intervention.

The groundwater draw for data center cooling is substantial and long-term. Approving annexation before a full hydrological and environmental impact review is conducted is reckless. Changing the boundary line does not change where the water comes from; the aquifer is a shared resource, and its protection is a statewide responsibility.

The annexation would permanently destroy farmland and open space for a project offering minimal public benefit.

After construction, a data center employs only a handful of people. The economic return to the region is negligible compared to the permanent loss of agricultural land, the environmental impact, and the burdens placed on infrastructure, water, and energy systems. The public loses far more than it gains. The process itself raises serious concerns.

The speed at which this annexation is being pushed forward suggests a deliberate attempt to avoid scrutiny. This alone is sufficient grounds for the Department to pause, review, and, if warranted, prevent the annexation from moving ahead. Wisconsin's municipal boundary laws exist specifically to prevent decisions like this from being rushed through without proper oversight.

For these reasons, I am urging the Department of Administration to take immediate action to stop or delay this annexation until a comprehensive, transparent, and statewide-impact analysis is completed. Anything less would fail to protect the public interest and would expose Vienna, DeForest, and the broader region to long-term harm.

Thank you for your immediate attention. I look forward to the Department's prompt response and clarification of the steps it will take to ensure this annexation does not proceed unchecked.

Sincerely,
Jenna Frost
140 Jade Court, sun prairie, WI, 53590
Email: jlbyrant2197@gmail.com



Outlook

Immediate State Intervention Needed to Stop the Annexation of Vienna Land into DeForest

From J B <jbethr2@gmail.com>

Date Mon 11/17/2025 9:12 PM

To WI Municipal Boundary Review <wimunicipalboundaryreview@wisconsin.gov>

CAUTION: This email originated from outside the organization.

Do not click links or open attachments unless you recognize the sender and know the content is safe.

Dear Wisconsin Department of Administration,

I am writing to urgently request that the Department—and specifically the Municipal Boundary Review program—intervene to halt the proposed annexation of Town of Vienna land into the Village of DeForest.

This annexation is being advanced at a pace and scale entirely inappropriate for a decision with such far-reaching and irreversible consequences. The public interest is not being protected.

This is not a routine boundary adjustment. This is a deliberate attempt to fast-track a major industrial project by absorbing land that has been responsibly managed by Vienna for decades. Allowing this annexation to proceed without rigorous, state-level scrutiny would set a dangerous precedent—one in which municipal expansion is used as a shortcut to bypass community opposition, environmental responsibility, and regional planning.

The annexation threatens shared regional resources and undermines responsible land management.

The land in question is productive agricultural acreage and part of a shared groundwater system that sustains homes, farms, and surrounding municipalities. The proposed annexation would strip Vienna of control over land essential to its long-term planning and impose consequences on communities that will have no meaningful say in what follows.

The infrastructure burdens and energy demands of the planned development will spill far beyond DeForest.

A large-scale data center would require extraordinary electrical capacity and expensive infrastructure expansion. These costs—and the strain on the grid—will not be contained within DeForest's borders.

Neighboring communities will bear the effects while being completely cut out of the decision-making process. This is unacceptable and inconsistent with principles of fair, regional governance.

Water impacts alone warrant immediate intervention.

The groundwater draw for data center cooling is substantial and long-term. Approving annexation before a full hydrological and environmental impact review is conducted is reckless. Changing the boundary line does not change where the water comes from; the aquifer is a shared resource, and its protection is a statewide responsibility.

The annexation would permanently destroy farmland and open space for a project offering minimal public benefit. After construction, a data center employs only a handful of people. The economic return to the region is negligible compared to the permanent loss of agricultural land, the environmental impact, and the burdens placed on infrastructure, water, and energy systems. The public loses far more than it gains. The process itself raises serious concerns.

The speed at which this annexation is being pushed forward suggests a deliberate attempt to avoid scrutiny. This alone is sufficient grounds for the Department to pause, review, and, if warranted, prevent the annexation from moving ahead. Wisconsin's municipal boundary laws exist specifically to prevent decisions like this from being rushed through without proper oversight.

For these reasons, I am urging the Department of Administration to take immediate action to stop or delay this annexation until a comprehensive, transparent, and statewide-impact analysis is completed. Anything less would fail to protect the public interest and would expose Vienna, DeForest, and the broader region to long-term harm.

Thank you for your immediate attention. I look forward to the Department's prompt response and clarification of the steps it will take to ensure this annexation does not proceed unchecked.

Sincerely,
Juli Rupp, Town of Vienna Resident
4984 Cuba Valley Road
DeForest, WI 53532

Sent from my iPhone



Outlook

Immediate State Intervention Needed to Stop the Annexation of Vienna Land into DeForest

From Renola <renolaswoboda@gmail.com>**Date** Mon 11/17/2025 8:32 PM**To** WI Municipal Boundary Review <wimunicipalboundaryreview@wisconsin.gov>**CAUTION: This email originated from outside the organization.****Do not click links or open attachments unless you recognize the sender and know the content is safe.**

Dear Wisconsin Department of Administration,

I am writing to urgently request that the Department—and specifically the Municipal Boundary Review program—intervene to halt the proposed annexation of Town of Vienna land into the Village of DeForest.

This annexation is being advanced at a pace and scale entirely inappropriate for a decision with such far-reaching and irreversible consequences. The public interest is not being protected.

This is not a routine boundary adjustment. This is a deliberate attempt to fast-track a major industrial project by absorbing land that has been responsibly managed by Vienna for decades. Allowing this annexation to proceed without rigorous, state-level scrutiny would set a dangerous precedent—one in which municipal expansion is used as a shortcut to bypass community opposition, environmental responsibility, and regional planning.

The annexation threatens shared regional resources and undermines responsible land management.

The land in question is productive agricultural acreage and part of a shared groundwater system that sustains homes, farms, and surrounding municipalities. The proposed annexation would strip Vienna of control over land essential to its long-term planning and impose consequences on communities that will have no meaningful say in what follows.

The infrastructure burdens and energy demands of the planned development will spill far beyond DeForest.

A large-scale data center would require extraordinary electrical capacity and expensive infrastructure expansion. These costs—and the strain on the grid—will not be contained within DeForest's borders.

Neighboring communities will bear the effects while being completely cut out of the decision-making process. This is unacceptable and inconsistent with principles of fair, regional governance.

Water impacts alone warrant immediate intervention.

The groundwater draw for data center cooling is substantial and long-term. Approving annexation before a full hydrological and environmental impact review is conducted is reckless. Changing the boundary line does not change where the water comes from; the aquifer is a shared resource, and its protection is a statewide responsibility.

The annexation would permanently destroy farmland and open space for a project offering minimal public benefit.

After construction, a data center employs only a handful of people. The economic return to the region is negligible compared to the permanent loss of agricultural land, the environmental impact, and the burdens placed on infrastructure, water, and energy systems. The public loses far more than it gains. The process itself raises serious concerns.

The speed at which this annexation is being pushed forward suggests a deliberate attempt to avoid scrutiny. This alone is sufficient grounds for the Department to pause, review, and, if warranted, prevent the annexation from moving ahead. Wisconsin's municipal boundary laws exist specifically to prevent decisions like this from being rushed through without proper oversight.

For these reasons, I am urging the Department of Administration to take immediate action to stop or delay this annexation until a comprehensive, transparent, and statewide-impact analysis is completed. Anything less would fail to protect the public interest and would expose Vienna, DeForest, and the broader region to long-term harm.

Thank you for your immediate attention. I look forward to the Department's prompt response and clarification of the steps it will take to ensure this annexation does not proceed unchecked.

Sincerely,

Renola Swoboda

Email: RenolaSwoboda@gmail.com

Mobile: 608-609-8827



Outlook

Urgent Request for State Intervention: Opposition to Annexation of Vienna Land into DeForest

From Melinda Murphy <murphymelindaa@gmail.com>

Date Mon 11/17/2025 8:20 PM

To WI Municipal Boundary Review <wimunicipalboundaryreview@wisconsin.gov>

CAUTION: This email originated from outside the organization.

Do not click links or open attachments unless you recognize the sender and know the content is safe.

Dear Wisconsin Department of Administration,

I am urgently requesting your review and intervention regarding the proposed annexation of Town of Vienna land into the Village of DeForest for the purpose of siting a large-scale data center. This action carries immediate and irreversible consequences for surrounding communities and should not proceed without thorough state-level oversight.

The proposed annexation is not a routine municipal adjustment—it is a major land acquisition that would reshape the region’s environmental resources, infrastructure demands, and long-term development trajectory. The speed at which this process is moving raises serious concerns about transparency, public involvement, and compliance with the broader public interest.

Annexation Threatens Shared Regional Resources

The land targeted for annexation is not simply vacant acreage; it supports critical agricultural activity, groundwater systems, and open space that benefit the entire region. A forced transfer of this land into DeForest jeopardizes Vienna’s ability to manage its resources responsibly and undermines regional planning principles meant to prevent exactly this type of overreach.

Infrastructure and Energy Burdens Will Be Pushed Onto Surrounding Communities

If annexation is approved, the resulting data center development will draw enormous electrical loads and require major infrastructure expansions—burdens that will not stay within DeForest’s borders. Neighboring towns will be affected by increased grid strain, higher utility costs, and accelerated infrastructure wear, without having any voice in the process. Annexation would effectively silence nearby communities while forcing them to bear substantial impacts.

Water Use Threatens Wells and Long-Term Sustainability

The Vienna-DeForest area depends on stable groundwater supplies for drinking water, agriculture, and daily use. Data center cooling requirements would place significant new stress on these shared water sources. Annexation shifts jurisdiction but does not change geology; the aquifer will be affected regardless of municipal lines.

Irreversible Land Loss With Minimal Community Benefit

Annexation would permanently convert farmland and open space into industrial use for a project that

provides minimal long-term employment and negligible local benefit. This is not sustainable development—this is extraction of land and resources for private gain at public expense.

The Annexation Process Requires Scrutiny—Now

Given these risks, I am asking the Department of Administration to take an active role in reviewing this proposed annexation to ensure it adheres to Wisconsin's standards for municipal boundary changes, environmental protection, and public-interest considerations. The speed and scale of this decision demand rigorous oversight and, if necessary, state action to prevent annexation from proceeding without a full and transparent evaluation.

The people of Vienna, DeForest, and the broader region deserve protection from reckless land transfers that threaten their water, energy systems, environment, and quality of life. I strongly urge the Department to intervene and halt or delay this annexation until a comprehensive, statewide-impact analysis is conducted.

Thank you for your immediate attention to this urgent matter.

Respectfully,
Melinda A. Murphy, J.D.

6491 Linden Circle

Windsor, WI 53598

608-961-8198



Outlook

Immediate State Intervention Needed to Stop the Annexation of Vienna Land into DeForest

From Janice Maneke <jdmaneke@gmail.com>

Date Tue 11/18/2025 12:45 PM

To WI Municipal Boundary Review <wimunicipalboundaryreview@wisconsin.gov>; Janice Maneke <jdmaneke@gmail.com>; Judy DEWANE <dewane@pt.wisc.edu>

CAUTION: This email originated from outside the organization.

Do not click links or open attachments unless you recognize the sender and know the content is safe.

Dear Wisconsin Department of Administration,

I am writing to urgently request that the Department—and specifically the Municipal Boundary Review program—intervene to halt the proposed annexation of Town of Vienna land into the Village of DeForest.

As you may know, the town of Vienna, Wisconsin has already decided to NOT move forward with the proposed addition of a very large QTS data center. Rather than moving on to another location, QTS has schemed to attempt to annex the land from one local government (Town of Vienna) to its neighbor (Village of DeForest). Many residents of this bedroom community, like our neighbors in Vienna, WI want no part of this data center.

This annexation is being advanced at a pace and scale entirely inappropriate for a decision with such far-reaching and irreversible consequences. The public interest is not being protected.

This is not a routine boundary adjustment. This is a deliberate attempt to fast-track a major industrial project by absorbing land that has been responsibly managed by Vienna for decades. Allowing this annexation to proceed without rigorous, state-level scrutiny would set a dangerous precedent—one in which municipal expansion is used as a shortcut to bypass community opposition, environmental responsibility, and regional planning.

The annexation threatens shared regional resources and undermines responsible land management.

The land in question is productive agricultural acreage and part of a shared groundwater system that sustains homes, farms, and surrounding municipalities. The proposed annexation would strip Vienna of control over land essential to its long-term planning and impose consequences on communities that will have no meaningful say in what follows.

The infrastructure burdens and energy demands of the planned development will spill far beyond DeForest.

A large-scale data center would require extraordinary electrical capacity and expensive infrastructure expansion. These costs—and the strain on the grid—will not be contained within DeForest's borders.

Neighboring communities will bear the effects while being completely cut out of the decision-making process. This is unacceptable and inconsistent with principles of fair, regional governance.

Water impacts alone warrant immediate intervention. The groundwater draw for data center cooling is substantial and long-term. Approving annexation before a full hydrological and environmental impact review is conducted is reckless. Changing the boundary line does not change where the water comes from; the aquifer is a shared resource, and its protection is a statewide responsibility.

The annexation would permanently destroy farmland and open space for a project offering minimal public benefit.

After construction, a data center employs only a handful of people. The economic return to the region is negligible compared to the permanent loss of agricultural land, the environmental impact, and the burdens placed on infrastructure, water, and energy systems. The public loses far more than it gains. The process itself raises serious concerns.

The noise pollution coming from a data center the size QTS is proposing would be far reaching. Residents living near data centers have reported a constant hum or buzz coming from data centers into the residential area requiring residents to invest in additional insulation and more soundproof windows. They have reported windows shaking when the generators run.

Oftentimes, once a single data center has been established, additional companies build new data centers nearby. This is not a super rural area, with farmland for miles and miles. This is an area of prime farmland situated between several small communities. ALL of these communities would be adversely affected by any data center being built in this area.

The speed at which this annexation is being pushed forward suggests a deliberate attempt to avoid scrutiny. This alone is sufficient grounds for the Department to pause, review, and, if warranted, prevent the annexation from moving ahead. Wisconsin's municipal boundary laws exist specifically to prevent decisions like this from being rushed through without proper oversight.

For these reasons, I am urging the Department of Administration to take immediate action to stop or delay this annexation until a comprehensive, transparent, and statewide-impact analysis is completed. Anything less would fail to protect the public interest and would expose Vienna, DeForest, and the broader region to long-term harm.

Thank you for your time and immediate attention. I look forward to the Department's prompt response and clarification of the steps it will take to ensure this annexation does not proceed unchecked.

Sincerely,
Janice Maneke
132 Seminole Way
DeForest, WI 53532
Email: jdmaneke@gmail.com
Phone: 608.217.7697



Outlook

Immediate State Intervention Needed to Stop the Annexation of Vienna Land into DeForest

From Carol Lynch <cklynch23@gmail.com>

Date Tue 11/18/2025 1:00 PM

To WI Municipal Boundary Review <wimunicipalboundaryreview@wisconsin.gov>

CAUTION: This email originated from outside the organization.
Do not click links or open attachments unless you recognize the sender and know the content is safe.

Dear Wisconsin Department of Administration,

I am writing to urgently request that the Department—and specifically the Municipal Boundary Review program—intervene to halt the proposed annexation of Town of Vienna land into the Village of DeForest.

This annexation is being advanced at a pace and scale entirely inappropriate for a decision with such far-reaching and irreversible consequences. The public interest is not being protected.

This is not a routine boundary adjustment. This is a deliberate attempt to fast-track a major industrial project by absorbing land that has been responsibly managed by Vienna for decades. Allowing this annexation to proceed without rigorous, state-level scrutiny would set a dangerous precedent—one in which municipal expansion is used as a shortcut to bypass community opposition, environmental responsibility, and regional planning. The annexation threatens shared regional resources and undermines responsible land management.

The land in question is productive agricultural acreage and part of a shared groundwater system that sustains homes, farms, and surrounding municipalities. The proposed annexation would strip Vienna of control over land essential to its long-term planning and impose consequences on communities that will have no meaningful say in what follows. The infrastructure burdens and energy demands of the planned development will spill far beyond DeForest.

A large-scale data center would require extraordinary electrical capacity and expensive infrastructure expansion. These costs—and the strain on the grid—will not be contained within DeForest's borders.

Neighboring communities will bear the effects while being completely cut out of the decision-making process. This is unacceptable and inconsistent with principles of fair, regional governance.

Water impacts alone warrant immediate intervention. The groundwater draw for data center cooling is substantial and long-term. Approving annexation before a full hydrological and environmental impact review is conducted is reckless. Changing the boundary line does not change where the water comes from; the aquifer is a shared resource, and its protection is a statewide responsibility. The annexation would permanently destroy farmland and open space for a project offering minimal public benefit.

After construction, a data center employs only a handful of people. The economic return to the region is negligible compared to the permanent loss of agricultural land, the environmental impact, and the

burdens placed on infrastructure, water, and energy systems. The public loses far more than it gains. The process itself raises serious concerns.

The speed at which this annexation is being pushed forward suggests a deliberate attempt to avoid scrutiny. This alone is sufficient grounds for the Department to pause, review, and, if warranted, prevent the annexation from moving ahead. Wisconsin's municipal boundary laws exist specifically to prevent decisions like this from being rushed through without proper oversight.

For these reasons, I am urging the Department of Administration to take immediate action to stop or delay this annexation until a comprehensive, transparent, and statewide-impact analysis is completed. Anything less would fail to protect the public interest and would expose Vienna, DeForest, and the broader region to long-term harm.

Thank you for your immediate attention. I look forward to the Department's prompt response and clarification of the steps it will take to ensure this annexation does not proceed unchecked.

Sincerely,
Carol Lynch
7085 Patton Rd, DeForest, WI 53532
cklynch23@gmail.com



Outlook

Opposition to Annexation for Proposed AI Data Center

From MacKenzie Klusendorf <mkolb02@gmail.com>

Date Wed 11/19/2025 8:26 AM

To WI Municipal Boundary Review <wimunicipalboundaryreview@wisconsin.gov>

CAUTION: This email originated from outside the organization.

Do not click links or open attachments unless you recognize the sender and know the content is safe.

Good morning,

I am writing to firmly oppose the proposed annexation of land from Vienna, WI, intended for the development of an AI data center. As a DeForest resident living within one straight-line mile of the proposed site, I have serious concerns.

Key Concerns:

1. Community Impact & Identity

Annexing land from a neighboring town undermines its autonomy and erodes the character of our region. This decision prioritizes corporate interests over the voices of residents who have built and sustained these communities. Vienna's refusal to sign a Cooperation Agreement with QTS, to the tune of \$40 million, clearly indicates they do not want this massive data center in their town. It is concerning that the state can disregard this decision and proceed with the development anyway. This situation highlights a significant issue.

2. Environmental & Infrastructure Strain

AI data centers require massive energy and water resources. This project could strain local utilities, increase carbon emissions, and disrupt ecosystems—without clear plans for sustainable mitigation. I attended the QTS presentation last night. While they claim to work with residents and act sustainably, it's evident that, as a multi-billion-dollar corporation, their primary concern is profit, not the well-being of the residents.

3. Economic Risks

Proponents often tout the economic benefits of such developments, but these benefits rarely extend to local residents. The jobs generated are typically specialized and limited in number. Meanwhile, nearby property values are likely to decline, and utility costs are expected to rise. How is it fair to disrupt the lives of long-term residents for the profit of a Blackstone-owned company?

4. Transparency & Public Engagement

Decisions of this magnitude should involve open forums, environmental impact studies, and clear disclosure of long-term obligations.

Request:

I urge the council to reject this annexation proposal. If further consideration is given, I request comprehensive environmental reviews, public hearings, and guarantees that local residents, not outside corporations, will benefit from any development and not be negatively harmed in any way.

Thank you for your attention to this matter. I trust you will prioritize the well-being and integrity of our communities over short-term economic incentives.

Sincerely,

Kenzie Klusendorf



Immediate State Intervention Needed to Stop the Annexation of Vienna Land into DeForest

From shawnhaney@centurytel.net <shawnhaney@centurytel.net>

Date Tue 11/18/2025 7:56 PM

To WI Municipal Boundary Review <wimunicipalboundaryreview@wisconsin.gov>

CAUTION: This email originated from outside the organization.

Do not click links or open attachments unless you recognize the sender and know the content is safe.

Dear Review Committee Members:

I am writing to request that the Department, specifically the Municipal Boundary Review program, intervene to halt the proposed annexation of Town of Vienna land into the Village of DeForest.

I live directly across Hahn Road from this project. I have lived there for 38 years. This annexation is being advanced at a pace and scale entirely inappropriate for a decision with such far-reaching and irreversible consequences. The public interest is not being protected. This is not a routine boundary adjustment. It is a deliberate attempt to fast-track a major industrial project by absorbing land that has been a part of the Town of Vienna for decades.

This project was previously proposed for the Town of Vienna. The landowners did not feel that it was moving fast enough, so they convinced QTS to move it to the Village of DeForest. Allowing this annexation to proceed without rigorous, state-level scrutiny would set a dangerous precedent. One in which municipal expansion is used as a shortcut to bypass community opposition, environmental responsibility, and regional planning. The annexation threatens shared regional resources and undermines responsible land management.

The land for this project is productive agricultural acreage and part of a shared groundwater system that sustains homes, farms, and surrounding municipalities. The proposed annexation would strip Vienna of control over land essential to its long-term planning and impose consequences on communities that will have no say in what follows. The infrastructure burdens and energy demands of the planned development will spill far beyond DeForest.

A large-scale data center would require extraordinary electrical capacity and expensive infrastructure expansion. These costs, and the strain on the grid, will not be contained within DeForest's borders. Neighboring communities will bear the effects while being completely cut out of the decision-making process. This is unacceptable and inconsistent with principles of fair, regional governance.

Water impacts alone warrant immediate intervention. The groundwater draw for data center cooling is substantial and long term. Approving annexation before a full hydrological and environmental impact review is conducted is reckless. Changing the boundary lines does not change where the water comes from; the aquifer is a shared resource, and its protection is a statewide responsibility. The annexation would permanently destroy farmland and open space for a project offering minimal public benefit.

After construction, a data center employs a minimal amount of people. The economic return to the region is negligible compared to the permanent loss of agricultural land, the environmental impact, and the burdens placed on infrastructure, water, and energy systems. The public loses far more than it gains.

The process itself raises many concerns. In a document I received via a Public Records Request, QTS is requiring the Village of DeForest to support unwinding annexation if the QTS project does receive final approvals. I doubt DeForest will share that fact with you, but I have the document if you want it.

The speed at which this annexation is being pushed forward suggests a deliberate attempt to avoid scrutiny. This combined with the fact that a bill has been introduced in the Assembly for data center review, should be grounds for the Department to pause, review, and if warranted, prevent the annexation from moving ahead. Wisconsin's municipal boundary laws exist specifically to prevent decisions like this from being rushed through without oversight.

For these reasons, I am asking that the Department of Administration stop or delay this annexation until a comprehensive, transparent, and statewide-impact analysis is completed. Anything less would fail to protect the public interest and would expose the region to long term harm.

Thank you for your immediate attention. I look forward to the Department's prompt response and clarification of the steps it will take to ensure this annexation does not proceed unchecked.

Sincerely,

Shawn Haney
5600 Hahn Road
DeForest, WI 53532
Phone 608-516-6226
Email shawnhaney@centurytel.net



Outlook

Please Oppose DeForest Water/Sewer Expansion/for Data Center proposed

From Judy&Mark MELOY <jmmeloy@centurytel.net>

Date Tue 11/18/2025 6:51 PM

To WI Municipal Boundary Review <wimunicipalboundaryreview@wisconsin.gov>

CAUTION: This email originated from outside the organization.

Do not click links or open attachments unless you recognize the sender and know the content is safe.

I am requesting that CARPC reject or at very least delay any proposed water and sewer service area expansion related to Village of DeForest's plan to annex Town of Vienna land for a very large Data Center.

This project would have major regional consequences. Groundwater, Data Centers require large water volumes, putting aquifers at risk for homes, farms and the environment. There would be permanent loss of farmland. This land is a very productive agricultural land that can never be replaced.

Water and sewer expansions and universal utility demands would affect all surrounding communities without having any voice in this process.

Data Centers provide very few long term jobs relative to their massive resource use.

This proposal is being pushed forward without adequate study or transparency.

I strongly urge you to withhold approval until full environmental hydrological, and regional-impact analyses

are completed-and to reject these expansions if these concerns cannot be resolved.

Please protect our water resources, farmland and communities by exercising your oversight authority.

Thank you for your time. Mark & Judy Meloy. 5209 Daley Rd. DeForest, WI 53532



Outlook

Fwd: Petition ID 14813 - not recommend

From Jenny Sweatt <jpsweatt4@gmail.com>**Date** Mon 11/24/2025 9:26 PM**To** WI Municipal Boundary Review <wimunicipalboundaryreview@wisconsin.gov> 1 attachment (690 KB)

DOA message Nov 23rd.pdf;

CAUTION: This email originated from outside the organization.**Do not click links or open attachments unless you recognize the sender and know the content is safe.**

Sent from my iPhone

Begin forwarded message:

From: Jenny Sweatt <jpsweatt4@gmail.com>**Date:** November 24, 2025 at 8:31:46 AM CST**To:** wimunicipalboundariesreview@wisconsin.gov**Subject: Petition ID 14813 - not recommend**

HI-

Please find attached a message regarding petition ID 14813 and my request, with reasons to not recommend.

Any questions please reach out.

Thank you

Jenny

To Who this may concern-

I am writing asking you not to recommend the annexation the Vienna land to the Village of Deforest, regarding petition ID 14813.

The comprehensive plans of Deforest and Vienna both contain verbiage related to retaining agricultural preserved land. Both comprehensive plan maps have this petitioned land as agricultural preserve. Allowing the annexation for the proposed Data center on this land will change the layout of this land tremendously and not consistent with either comprehensive plans.

At a recent QTS open house QTS Chris Kapper, Vice President Development stated that “the layout of this land will change, there will be no cows here”. Understanding that agricultural comes in different ways, he clearly states the layout will change, which contradicts the comprehensive plans that were both very recently updated for the Town of Vienna (2025) and Village of Deforest (2023).

Below you will find some key items specifically in the Village of Deforest comprehensive plan and reasons not to recommend the annexation petition. The petitioned land for annexation is currently farmland/ agricultural preserve, it is not listed as commercial nor urban /mix environment. This land will not maintain its homogeneity.

Annexing 1135 acres, and another 435 acres they just petitioned, will equate to almost 2.5 square miles, over a quarter of the size of the current village of Deforest. Recommending the annexation of this land puts the Village of Deforest, Town of Vienna and County at risk. The purpose used of this currently is for 615 acres, they have not divulged what the remained 1000 acres will be used for or how.

Found below are sections from the Village of Deforest comprehensive plan that are not consistent with the annexation petition.

Policy #5 - Objective#8 Comprehensive plan states: “Working in cooperation with surrounding towns, maintain productive agricultural lands in the areas surrounding the Village where not identified for development in this Comprehensive Plan.”

This means they will work with the towns around Deforest to maintain **productive** agricultural land, they annexation would dissolve any productive land across this 1100 acres.

Figure 5.1: Village of DeForest Future Land Use Categories and Policies (multi-page figure)

Future Land Use Category (shown on Map 5-1)	General Description of Land Uses Allowed and Character	Typical Implementing Zoning Districts	Density Guidelines	Development Policies (see also Village zoning, subdivision, stormwater management, official map, and other ordinances)
Agricultural Preservation	Agricultural uses or agricultural-related uses such as implement dealerships, focused on areas actively used for farming, with productive agricultural soils, with topographic conditions suitable for farming, and with long-term (i.e., 15+ year) suitability for farming. This category also includes and is intended to accommodate farmsteads, limited non-farm housing in accordance with the policies to the right, associated home occupations and family businesses, and other uses identified as permitted and conditional uses in implementing zoning districts.	In Village's extraterritorial zoning areas: A-1 Exclusive Agricultural, A-2 General Agricultural, A-3 Small Lot Agricultural, A-B Agricultural Business, and limited R-H-1 and other residential districts. Outside of extraterritorial zoning areas, County zoning districts are used.	Maximum density of 1 home or non-residential/non-agricultural use per 35 acres of lands in contiguous single ownership, as further described in the density policy within the Village's subdivision ordinance. Secondary farm residences are excluded. This policy will be carried out in accordance with applicable Town plan density policies, where the applicable Town's policy is as strict or stricter than the Village's.	<ol style="list-style-type: none"> 1. Adhere to the agricultural preservation and land division policies in the Natural & Cultural Resources chapter and the Village's subdivision ordinance. 2. Encourage clustering of smaller individual home sites at a density of 1 per 35 acres of contiguous single ownership (e.g., on one or two acre lots), as opposed to housing on 35+ acre lots. 3. Assure that rural uses do not impede very long-term urban development or road or utility extensions. 4. Through their Cooperative Plan, DeForest and Windsor have agreed that the Agricultural Preservation area east of Highway 51 and north of Windsor Road will be used for agricultural production and agribusiness uses.

3 Natural & Cultural Resources

- Describes environmental protection and community building efforts
- Links these efforts to quality of life and land use planning

Goal

DeForest's natural resources, memorable places, and community activities define the Village's image. The Village will continue to be a steward of its land, water, and natural resources; enhance and celebrate its special places and events; and protect residents against natural hazards like flooding.

Natural & Cultural Resources Initiatives Summary			
Initiative <small>(click on link to learn more)</small>	Description	Funding	Responsibility
Protect and Evaluate Environmental Corridors	Environmental corridors are a layering of floodplains, wetlands, and other key elements of the natural resource base. The Village will work with CARPC and landowners to assure accurate and consistent environmental corridor boundaries, and to explore changes in criteria for determining environmental corridors. The Village will also enhance the quality and protection of environmental corridors.	Wisconsin Stewardship and Federal LAMCON programs; Partnerships with CARPC, Dane County, WisDNR, USFWS, nonprofits, and developers; General fund	Village Zoning Administrator, in collaboration with CARPC staff, and with assistance from Village planning and engineering consultants. Ordinance and corridor changes would require Village Board action.
Help Protect and Improve Water Quality in the Yahara Watershed	Because DeForest is located near the headwaters of the Yahara River, local actions can have a significant impact on water quality in and downstream from the Village. The Village intends to lead and participate local and regional efforts to improve water quality, including continuing to manage winter salt use, emphasizing leaf collection, street sweeping/cleaning, keeping storm drains clean, promoting stormwater infiltration, and installing and promoting green infrastructure.	Partnerships with regional watershed groups and Friends of the Yahara River Headwaters, with potential funding from Madison Metropolitan Sewerage District (MMSD), County, WisDNR, General fund	Village Public Services Director, with assistance from Village engineering consultant, and in coordination with watershed organizations.

This statement indicates they will work with Yahara River Headwaters and MMSD to protect the environmental corridors. This land petitioned to be annexed is in direct route and right next to some very important aquifer and wetland areas. There should be an independent environmental and wildlife study done prior to any movement forward on this annexation.

Please take these statement and the lack of homogeneity for petition ID 14813 and not recommend annexation of 1135 acres from the Town of Vienna to the Village of DeForest.

Thank you for your consideration.

Vienna town resident

Jenny Sweatt



Outlook

Petition 14813

From Diana K <karlsdi@yahoo.com>**Date** Mon 11/24/2025 9:27 PM**To** WI Municipal Boundary Review <wimunicipalboundaryreview@wisconsin.gov>**CAUTION: This email originated from outside the organization.****Do not click links or open attachments unless you recognize the sender and know the content is safe.**

Dear Wisconsin Department of Administration,

I am writing to express my **opposition** to **petition ID 14813**, the proposed annexation of land in Dane County for the purpose of constructing a data center. After reviewing the statutory factors used by the Department when determining whether an annexation is appropriate, it appears that this proposal does **not** meet several key requirements.

I feel that the proposed annexation does not demonstrate the level of territorial contiguity or logical boundary coherence required under Wisconsin law. The annexation map appears to create irregular, non-compact boundaries that do not reflect a natural or efficient extension of existing municipal limits.

Based on current information, it is unclear how this data center serves the public interest. Large-scale industrial facilities of this nature bring substantial infrastructure demands while offering relatively few long-term jobs or community benefits. The environmental and land-use impact--such as high energy consumption, potential water use, increased traffic, and changes to rural character including substantial alteration of rural character and agricultural land conversion--raising additional public interest concerns.

Neither the **Town of Vienna** nor the **Village of DeForest** identifies data center development or similar large-scale industrial use in their adopted comprehensive plans. This project is also **not consistent with either community's Smart Growth goals**, which emphasize coordinated land-use planning, preservation of agricultural lands, and development patterns that reflect community-endorsed long-term visions. As required under Wisconsin's comprehensive planning law, annexations should align with the adopted plans of the affected municipalities. This proposal appears to be in clear conflict with those plans.

Given these substantial concerns, I respectfully request that the Wisconsin Department of Administration thoroughly evaluate the annexation petition and determine that it does **not** meet the statutory criteria for approval.

Thank you for your attention to this matter and for your commitment to ensuring that annexation decisions reflect sound planning practices and the long-term interests of Wisconsin communities.

Respectively,

Diana Karls



Outlook

Stop Annexation of Vienna Land into DeForest

From David Lynch <lynchdavid9051@gmail.com>

Date Wed 11/26/2025 2:25 PM

To WI Municipal Boundary Review <wimunicipalboundaryreview@wisconsin.gov>

 9 attachments (9 MB)

April swamp.jpg; P6050048.JPG; 0.jpg; P5260037.JPG; P8040015 egret.JPG; P9140321.JPG; pelicans.jpg; P9270375.JPG; PA050383.JPG;

CAUTION: This email originated from outside the organization.

Do not click links or open attachments unless you recognize the sender and know the content is safe.

I am writing in opposition of the Village of DeForest requesting to annex lands in the Town of Vienna for the purpose of a Data Center Complex. This request is not in the best public interest. It is a financial bail out for past fiscal irresponsibility by DeForest and the enrichment of a few property owners in the Town of Vienna. Allowing the promise of multi millions to deplete the Town's minerals, water and utilities, natural wildlife resources and character is irresponsible and wrong.

The proposal involves an immense land mass of the Town's northeastern region, parts of which are significant and sensitive. Once determined to be a lake bed, this entire basin is unique, as it lies on a glacial rift where water flows north and south. Full of glacial depressions differing in depth supporting large pot hole features such as wetlands, home to one of the most diverse populations of wildlife in the county. Parks and recreation, educational and research lands are no longer created and once altered the impacts on them is forever.

I join the public in asking you to deny this request.

Photos of Vienna wetland area are attached.

Respectfully,

David Lynch





2022/06/05





2022/05/26





Outlook

Re: ADA/504/WEPA Disability Impact Notice – QTS Annexation Petition (follow up)

From Megan Harrier <meganharrier@gmail.com>**Date** Sat 11/29/2025 11:20 AM**To** changb@deforestwi.gov <changb@deforestwi.gov>; lundgrenc@deforestwi.gov <lundgrenc@deforestwi.gov>**Cc** Daniel Harrier <dharrier@siteone.com>; Vick, Dawn - DOA <dawn.vick@wisconsin.gov>; Schmidtke, Erich J - DOA <Erich.Schmidtke@wisconsin.gov>

2 attachments (152 KB)

Research_Exhibit.pdf; Village_Combined_Packet_FINAL.pdf;

CAUTION: This email originated from outside the organization.**Do not click links or open attachments unless you recognize the sender and know the content is safe.**

Hello,

Can you please confirm receipt of this email for my records. I have also attached a research exhibit for your consideration.

Thank you,

Megan Harrier

Sent from my iPhone

On Nov 21, 2025, at 9:47 AM, Megan Harrier <meganharrier@gmail.com> wrote:

Hello,

Please find attached my formal submission packet titled “Village Board Submission Packet — Annexation Petition Objection and ADA/504/WEPA Disability Impact Notice.”

This packet includes:

- A formal disability and environmental impact notice under ADA Title II, Section 504, and WEPA
- Documentation outlining legal obligations
- A rights summary relevant to the annexation review

My minor child has a sensory processing disability that is directly affected by noise, vibration, and low-frequency sound. I am requesting that the Village fulfill its ADA, Section 504 (if applicable), and WEPA obligations before taking any action on the annexation petition.

Please confirm receipt for my records.

Thank you,

Megan Harrier

502 Riverside Drive

DeForest, WI 53532

meganharrier@gmail.com

(608) 712-8103

Exhibit: Research Summary on Noise, Low-Frequency Sound, Vibration, and Effects on Children

Introduction

This exhibit summarizes peer-reviewed research on environmental noise, low-frequency noise, vibration, and their documented effects on children's health and learning, with emphasis on neurodivergent and sensory-sensitive students. It is intended to inform review of the proposed QTS data center and associated infrastructure near residential neighborhoods and Yahara Elementary School.

Children's Vulnerability to Environmental Noise

The World Health Organization (WHO) identifies children as a particularly vulnerable group for environmental noise exposure. Children's nervous systems and cognitive abilities are still developing, and they have limited control over their environments. Noise can interfere with sleep, stress regulation, and learning, and these effects may accumulate over the course of childhood. [1]

Noise, Learning, and Cognition in School-Age Children

Multiple systematic reviews have examined the impact of chronic environmental noise on children's cognition. A review of over 30 studies reported consistent associations between transportation noise (road, rail, aircraft) and poorer reading comprehension, memory, and attention in school-age children. [2] These effects have been observed even when overall sound levels would be considered acceptable under general community standards.

Prospective School Studies

Prospective cohort studies following children over time have found that higher noise levels at school are associated with slower development of working memory and attention. For example, research from the ISGlobal BREATHE project in Barcelona reported that children in schools with higher road-traffic noise showed significantly slower gains in working memory and increased inattentiveness over a single academic year compared with peers in quieter schools. [3] These findings indicate that chronic noise at school can meaningfully affect educational trajectories.

Classroom Noise Guidelines

WHO community noise guidance and school-acoustics standards typically recommend keeping unoccupied classroom background levels at or below approximately 35 dB(A) to support speech intelligibility and learning. Levels above this range reduce the clarity of teachers' voices, increase listening effort, and are associated with worse comprehension and behavior. [1][2] Environmental decisions that introduce new long-term noise sources near schools therefore warrant special scrutiny.

Low-Frequency Noise and Vibration

Low-frequency noise (LFN) generally refers to sound in the 20–200 Hz range, which includes the hum and rumble from large fans, chillers, transformers, and diesel generators. LFN propagates over longer distances and is less attenuated by walls and windows than higher-frequency sound, which means indoor levels can remain elevated even when overall A-weighted noise measurements appear modest. [4]

Health and Annoyance Effects of Low-Frequency Noise

Reviews of LFN exposure report high rates of annoyance and a constellation of related symptoms, including headache, unusual tiredness, difficulty concentrating, irritability, a sense of pressure in the ears, and sleep disturbance. [4] Because LFN is often continuous and difficult to escape from inside buildings, affected residents may experience ongoing physiological and psychological stress. This is particularly relevant for 24/7 facilities that rely on large mechanical systems and periodic full-load generator testing, such as data centers.

Vibration and Physiological Stress

Mechanical vibration, which may accompany generator testing and heavy equipment operation, can further contribute to discomfort and stress responses. Studies of occupational and environmental vibration have documented impacts on balance, autonomic nervous system activity, and subjective wellbeing. While many studies focus on adults, the underlying mechanisms—repeated stimulation of the vestibular and somatosensory systems—are expected to be at least as concerning for children.

Autism, Hyperacusis, and Sensory Sensitivity

Meta-analyses indicate that a large proportion of autistic individuals experience decreased sound tolerance or hyperacusis, often far exceeding rates in the general population. Estimates suggest that roughly 40–70% of autistic people, including many autistic children, have clinically significant sound sensitivity. [5] Everyday environmental sounds that neurotypical individuals find tolerable—such as HVAC hum, distant machinery, or intermittent mechanical noise—can be overwhelming for these individuals.

Functional Impact on Autistic and Sensory-Sensitive Children

For autistic and sensory-sensitive children, noise exposure is not a minor annoyance; it can act as a barrier to participation. Clinical and educational reports describe children covering their ears, leaving rooms, experiencing meltdowns or shutdowns, and having difficulty concentrating or following instructions in noisy environments. [5] When noise sources are fixed and long-term—such as a nearby industrial or mechanical installation—children may feel chronically unsafe or dysregulated both at home and at school.

Implications for Yahara Elementary and Nearby Homes

Yahara Elementary functions as a sensitive receptor under environmental and public-health principles, because it houses large numbers of children, including neurodivergent and sensory-sensitive students. Research shows that chronic noise at school can slow the

development of working memory and attention, while low-frequency noise and vibration can contribute to fatigue, headaches, and difficulty concentrating. [2][3][4] For autistic and sensory-sensitive students, these exposures may be experienced as significantly more intense and disruptive. [5]

Relevance to the Proposed QTS Data Center

Large data centers typically involve extensive cooling and electrical systems that generate continuous mechanical noise, including low-frequency components, as well as periodic high-output generator testing. Based on the scientific literature, such sources have potential to: (a) elevate background noise at nearby homes and at Yahara Elementary; (b) introduce low-frequency hum and vibration that are difficult to mitigate indoors; and (c) create disproportionate hardship for autistic and sensory-sensitive children who are already at increased risk for noise-related distress and functional impairment. [1][2][3][4][5]

Summary

In summary, the research base supports the following conclusions: (1) children are more vulnerable than adults to the effects of environmental noise on health and learning; (2) chronic noise exposure around schools is linked to measurable cognitive and educational impacts; (3) low-frequency noise and vibration carry distinctive risks for annoyance, sleep disturbance, and concentration problems; and (4) autistic and sensory-sensitive children are disproportionately affected by these exposures. These findings are directly relevant to any decision that could introduce new long-term noise and low-frequency sources near homes and schools, particularly where neurodivergent children reside and attend class.

References

1. World Health Organization. Environmental Noise Guidelines for the European Region. WHO Regional Office for Europe; 2018.
2. Clark C, Paunovic K, et al. Environmental noise and children's cognition: systematic review of evidence. Noise & Health; 2013.
3. ISGlobal BREATHE Project. Road traffic noise and cognitive development in schoolchildren: prospective cohort findings; 2015–2022.
4. Leventhall G. Low-frequency noise and health. Noise & Health; 2016.
5. Williams ZJ, Suzman E, et al. Hyperacusis and decreased sound tolerance in autism spectrum disorder: a meta-analytic review; 2020.

Submission Packet

Submitted by: Megan Harrier

November 22, 2025

Megan Harrier

502 Riverside Drive

DeForest, WI 53532

meganharrier@gmail.com

608-712-8103

November 22, 2025

VIA EMAIL AND U.S. MAIL

DeForest Village Board

120 S. Stevenson Street

DeForest, WI 53532

Re: Formal Disability and Environmental Impact Notice Under ADA Title II, Section 504, and WEPA
Regarding the QTS Annexation Petition

To the Members of the Village Board:

I am writing as a resident of DeForest and as the parent of a neurodivergent minor child with a documented sensory disability.

My child has a sensory disability that makes them highly vulnerable to noise, vibration, and low-frequency sound. This creates a direct and substantial risk of harm from generator testing, vibration, and continuous low-frequency emissions associated with large data center operations.

I also request that any noise, vibration, and low-frequency impact analysis include Yahara Elementary School, where my child and many other neurodivergent and sensory-sensitive students attend. Schools are considered sensitive receptors under environmental review principles, and children—particularly those with sensory processing disabilities—are significantly more vulnerable to low-frequency sound

and vibration.

I. ADA Title II Obligations

Under 42 U.S.C. §12132 and 28 C.F.R. §35.130, public entities may not take actions that disproportionately burden disabled residents. This includes environmental decisions with foreseeable disability impacts.

II. Section 504 Considerations

If any federal or federal pass-through funding supports infrastructure for this development, Section 504 applies and prohibits creating avoidable hardship for a disabled resident.

III. WEPA Requirements

No independent WEPA-required human health, noise, vibration, or vulnerable population analysis has been performed despite clear foreseeable impacts.

IV. Requests

1. Independent third-party noise and vibration study
2. Real-world measurements
3. ADA disability-impact assessment
4. Public disclosure of environmental data
5. Pause annexation until compliance

Respectfully submitted,

/s/ Megan Harrier

Megan Harrier

ADA/504/WEPA Rights Summary

ADA Title II Requirements

Public entities must not take actions that disproportionately harm individuals with disabilities. This includes evaluating sensory-impact environmental changes when they affect disabled residents.

Section 504 Requirements

Entities receiving federal funds may not approve projects that create avoidable environmental hardships for disabled citizens. Reasonable accommodation may include noise impact studies, mitigation requirements, and delaying approval until disability impacts are assessed.

Wisconsin Environmental Policy Act (WEPA) Requirements

Municipalities must consider the impact of major projects on human health, quality of life, vulnerable populations, and noise and light pollution.

Legal Conclusion

Before advancing the QTS proposal, the Village must assess noise impact, evaluate effects on neurodivergent residents, ensure transparency, and avoid creating environmental barriers that could violate ADA Title II, Section 504, and state environmental law.

Additional Requests

- An independent third-party noise study before approval, including vibration and generator testing.
- Real-world measurements at nearby homes, not simulations.
- Decibel maps showing worst-case scenarios, especially during generator testing.
- Use of standards relevant to children with sensory disabilities, not OSHA workplace standards.
- Acoustic study must be independent, public, and completed before approval.

Personal Note

My son — and many neurodivergent children and adults — spend each day masking sensory discomfort in a world not built for them. Home is the one place where they can unmask, decompress, and feel safe.



Outlook

Re: Public Interest Objection – QTS Annexation Petition (Vienna → DeForest)

From Megan Harrier <meganharrier@gmail.com>**Date** Sat 11/29/2025 11:41 AM**To** Schmidtke, Erich J - DOA <Erich.Schmidtke@wisconsin.gov>; Vick, Dawn - DOA <dawn.vick@wisconsin.gov>**Cc** Daniel Harrier <dharrier@siteone.com>

2 attachments (151 KB)

Research_Exhibit.pdf; DOA_Combined_Packet_FINAL.pdf;

CAUTION: This email originated from outside the organization.**Do not click links or open attachments unless you recognize the sender and know the content is safe.**

Dear Division of Intergovernmental Relations,

I am writing to follow up on my earlier Public Interest Objection regarding the QTS annexation petition. For your review, I have attached an additional supporting exhibit summarizing peer-reviewed research on environmental noise, low-frequency sound, vibration, and their documented impacts on children's health, learning, and wellbeing.

This exhibit reinforces my request that an independent, third-party noise and vibration study be conducted—and made publicly available—before any determination is made as to whether the QTS petition is “In the Public Interest” under Wis. Stat. § 66.0217.

This concern extends beyond my own household. Yahara Elementary School, where my son attends, is close enough to the proposed development site that it may also be affected by noise, vibration, and low-frequency emissions associated with large-scale generator testing and mechanical operations. Schools are considered sensitive receptors in environmental assessments, and neurodivergent and sensory-sensitive children are especially vulnerable to these exposures.

Given these foreseeable impacts on nearby homes and a public elementary school, I respectfully request that DOA consider the attached exhibit as part of its Public Interest analysis.

Thank you for your time and attention.

Megan Harrier
Sent from my iPhone

On Nov 21, 2025, at 9:51 AM, Megan Harrier <meganharrier@gmail.com> wrote:

Hello,

I am submitting a formal **Public Interest Objection** to the QTS annexation petition filed on November 14, 2025, involving land proposed for transfer from the Town of Vienna to the Village of DeForest.

Attached is my complete **DOA Submission Packet**, which includes:

- A detailed Public Interest Objection
- ADA Title II disability-impact concerns
- Environmental and human-health considerations under WEPA
- A rights summary documenting applicable federal and state standards

Given the statutory 20-day review period, I am submitting this promptly so it may be included in the Department's determination of whether the annexation is "**In the Public Interest**" or "**Against the Public Interest**."

Please confirm receipt for my records.

Thank you,
Megan Harrier
502 Riverside Drive

DeForest, WI 53532
meganharrier@gmail.com
(608) 712-8103