



ORD 8838

Dept. of Legal & Administrative Services
Office of the City Clerk
211 Walnut St. • P.O. Box 426 • Neenah WI 54957-0426
Phone 920-886-6100 • Fax 920-886-6109
e-mail psturn@ci.neenah.wi.us
PATRICIA A. STURN, CMC
CITY CLERK


C-138

Certification of Ordinance

I, Patricia A. Sturn, duly appointed City Clerk of the City of Neenah, Wisconsin **DO HEREBY CERTIFY** that the attached is a copy of City of Neenah Ordinance No. 1342 which ordinance was adopted by the Common Council of said city at their regular meeting held on Wednesday, October 18, 2006.

I further certify that I have compared same with the original and found it to be a true and correct copy thereof.

Dated at Neenah, Wisconsin this 19th day of October 2006.


Patricia A. Sturn, CMC

STATE OF WISCONSIN
RECEIVED & FILED

OCT 23 2006

DOUGLAS LA FOLLETTE
SECRETARY OF STATE



AN ORDINANCE: By the Neenah Plan Commission
Re: Annexing 35.025 acres of land – (Church
property) to the City of Neenah.

ORDINANCE NO. 1342
Introduced: October 18, 2006
Committee/Commission Action:
RECOMMENDED FOR PASSAGE

AN ORDINANCE

The Common Council of the City of Neenah, Wisconsin, do ordain as follows:

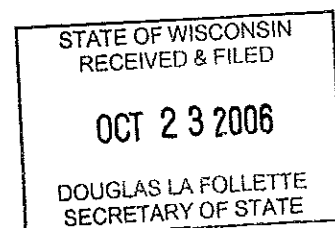
Section 1. Pursuant to Section 66.0223, Wis. Stats., the following described territory contiguous to the City of Neenah and presently in the Town of Neenah, be and the same hereby is, annexed to the City of Neenah, and the corporate limits of said City are hereby extended so as to include the following described property and shown on the attached Exhibit A:

PARTS OF THE NORTHEAST ¼ AND THE SOUTHEAST ¼ OF THE NORTHWEST ¼ OF SECTION 31, TOWN 20 NORTH, RANGE 17 EAST, TOWN OF NEENAH, WINNEBAGO COUNTY, WISCONSIN DESCRIBED AS FOLLOWS: BEGINNING AT THE NORTH ¼ CORNER OF SAID SECTION 31; THENCE SOUTH 00 DEGREES 05 MINUTES 55 SECONDS EAST, ALONG THE WEST LINE OF WHITE TAIL RUN, 1158.38 FEET; THENCE SOUTH 89 DEGREES 54 MINUTES 05 SECONDS WEST, 330.00 FEET; THENCE SOUTH 00 DEGREES 05 MINUTES 55 SECONDS EAST, 925.61 FEET; THENCE SOUTH 50 DEGREES 58 MINUTES 47 SECONDS WEST, ALONG THE NORTH RIGHT-OF-WAY LINE OF C.T.H. "JJ", 39.08 FEET; THENCE, CONTINUING ALONG SAID NORTH RIGHT-OF-WAY LINE, SOUTH 50 DEGREES 43 MINUTES 06 SECONDS WEST, 440.23 FEET; THENCE, CONTINUING ALONG SAID NORTH RIGHT-OF-WAY LINE, SOUTH 67 DEGREES 32 MINUTES 47 SECONDS WEST, 44.86 FEET; THENCE, ALONG THE EAST RIGHT-OF-WAY LINE OF DELL COURT, NORTH 39 DEGREES 18 MINUTES 30 SECONDS WEST, 105.72 FEET; THENCE, CONTINUING ALONG SAID EAST RIGHT-OF-WAY LINE, NORTH 00 DEGREES 20 MINUTES 42 SECONDS WEST, 1019.91 FEET; THENCE SOUTH 89 DEGREES 39 MINUTES 59 SECONDS WEST, ALONG THE NORTH RIGHT-OF-WAY LINE OF DELL COURT, 35.16 FEET; THENCE NORTH 00 DEGREES 05 MINUTES 55 SECONDS WEST, ALONG THE EAST LINES OF CERTIFIED SURVEY MAPS #5462 AND #3609, A DISTANCE OF 1306.17 FEET; THENCE SOUTH 89 DEGREES 49 MINUTES 18 SECONDS EAST, ALONG THE NORTH LINE OF SAID NORTHWEST ¼, A DISTANCE OF 849.51 FEET TO THE POINT OF BEGINNING.

PARCEL CONTAINS 1,525,700 SQUARE FEET (35.025 ACRES). THE TERRITORY SOUGHT TO BE ANNEXED HAS NO RESIDENTS.

Section 2. That said territory shall be temporarily zoned PDD Planned Development District

Section 3. That the limits of the Third Aldermanic District in the City of Neenah are hereby extended in such manner as to include said territory.



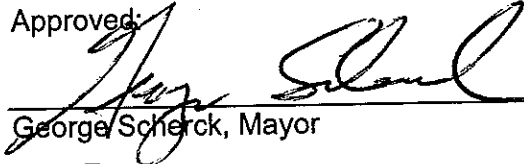
Section 4. Severability. In the event any section, subsection, clause, phrase or portion of this ordinance is for any reason held illegal, invalid or unconstitutional by any court of competent jurisdiction, such portion shall be deemed a separate, distinct and independent provision, and such holding shall not affect the validity of the remainder of this ordinance. It is the legislative intent of the Common Council that this ordinance would have been adopted if such illegal provision had not been included or any illegal application had not been made.

Section 5. Repeal and Effective Date. All ordinances or parts of ordinances and resolutions in conflict herewith are hereby repealed. This ordinance shall take effect from and after its passage and publication.


Adopted: October 18, 2006

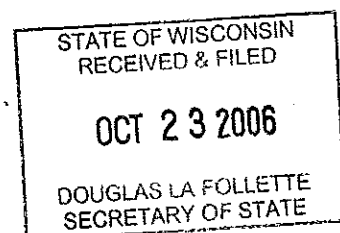
Published: October 18, 2006

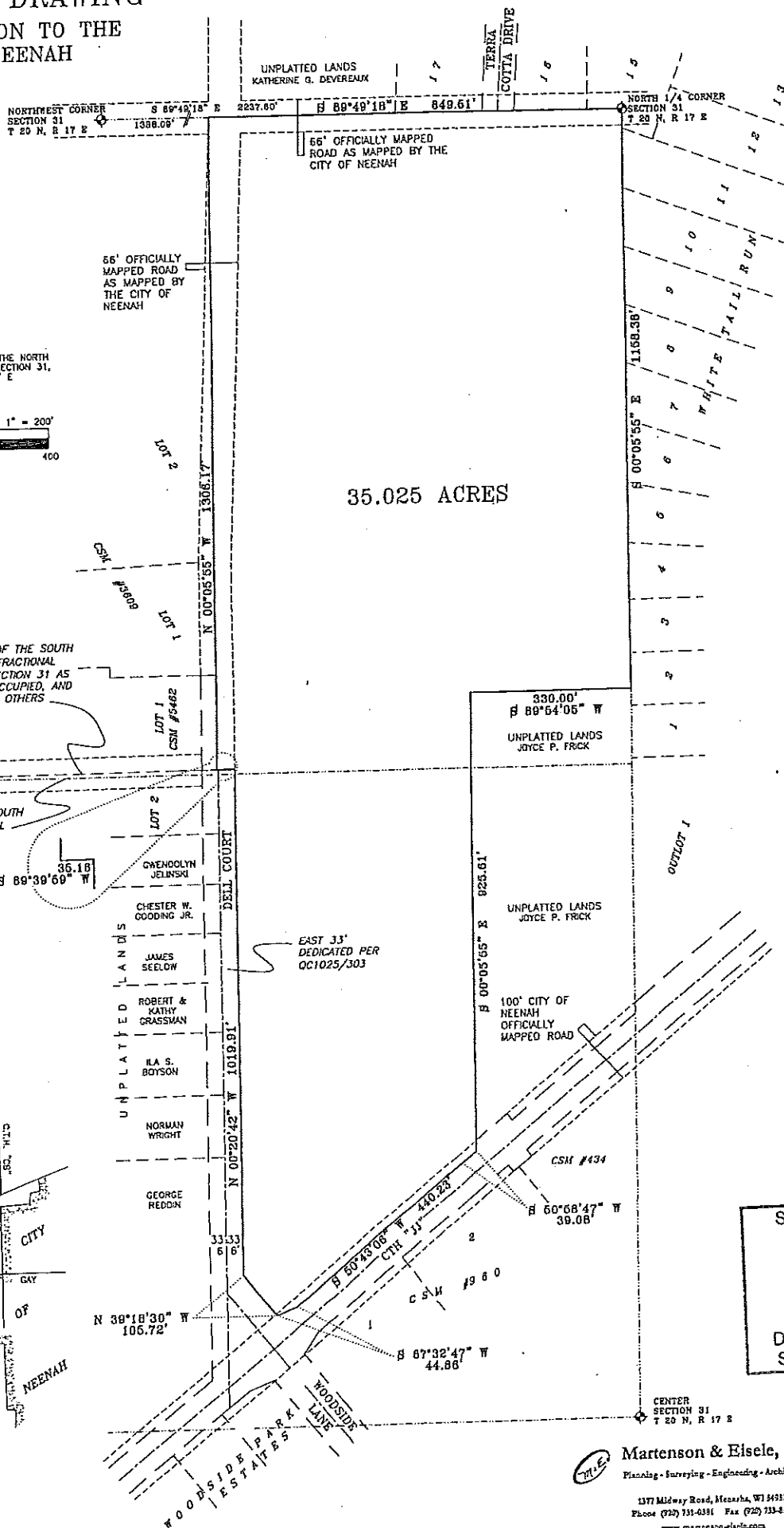
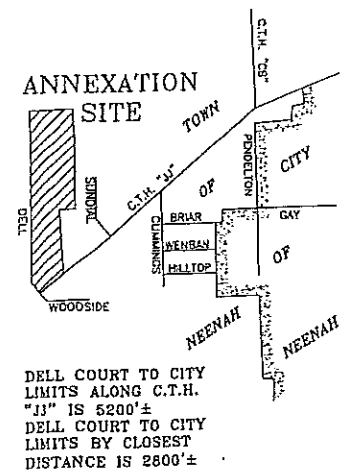
Approved:


George Scherck, Mayor

Attest:


Patricia Sturn, City Clerk





DOUGLAS LA FOLLETTE
SECRETARY OF STATE

1377 Midway Road, Menasha, WI 54952
Phone (920) 731-0391 Fax (920) 733-8378
www.mariassou-elaine.com
info@mariassou-elaine.com



CERTIFICATE OF ANNEXATION

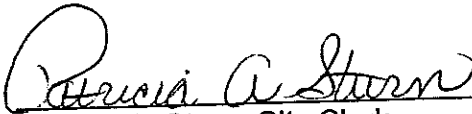
I, Patricia A. Sturn, City Clerk of the City of Neenah, County of Winnebago, State of Wisconsin, **DO HEREBY CERTIFY** that the following described property was detached from the Town of Neenah, County of Winnebago and was annexed to the City of Neenah pursuant to Section 66.0217(2) of the Wisconsin Statutes by an ordinance (Ordinance No. 1342) adopted by the Common Council of the City of Neenah at a regular meeting held on October 18, 2006:

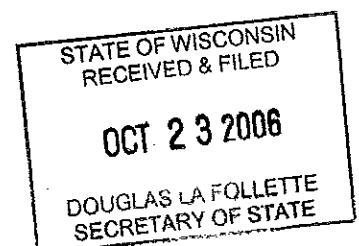
PARTS OF THE NORTHEAST ¼ AND THE SOUTHEAST ¼ OF THE NORTHWEST ¼ OF SECTION 31, TOWN 20 NORTH, RANGE 17 EAST, TOWN OF NEENAH, WINNEBAGO COUNTY, WISCONSIN DESCRIBED AS FOLLOWS: BEGINNING AT THE NORTH ¼ CORNER OF SAID SECTION 31; THENCE SOUTH 00 DEGREES 05 MINUTES 55 SECONDS EAST, ALONG THE WEST LINE OF WHITE TAIL RUN, 1158.38 FEET; THENCE SOUTH 89 DEGREES 54 MINUTES 05 SECONDS WEST, 330.00 FEET; THENCE SOUTH 00 DEGREES 05 MINUTES 55 SECONDS EAST, 925.61 FEET; THENCE SOUTH 50 DEGREES 58 MINUTES 47 SECONDS WEST, ALONG THE NORTH RIGHT-OF-WAY LINE OF C.T.H. "JJ", 39.08 FEET; THENCE, CONTINUING ALONG SAID NORTH RIGHT-OF-WAY LINE, SOUTH 50 DEGREES 43 MINUTES 06 SECONDS WEST, 440.23 FEET; THENCE, CONTINUING ALONG SAID NORTH RIGHT-OF-WAY LINE, SOUTH 67 DEGREES 32 MINUTES 47 SECONDS WEST, 44.86 FEET; THENCE, ALONG THE EAST RIGHT-OF-WAY LINE OF DELL COURT, NORTH 39 DEGREES 18 MINUTES 30 SECONDS WEST, 105.72 FEET; THENCE, CONTINUING ALONG SAID EAST RIGHT-OF-WAY LINE, NORTH 00 DEGREES 20 MINUTES 42 SECONDS WEST, 1019.91 FEET; THENCE SOUTH 89 DEGREES 39 MINUTES 59 SECONDS WEST, ALONG THE NORTH RIGHT-OF-WAY LINE OF DELL COURT, 35.16 FEET; THENCE NORTH 00 DEGREES 05 MINUTES 55 SECONDS WEST, ALONG THE EAST LINES OF CERTIFIED SURVEY MAPS #5462 AND #3609, A DISTANCE OF 1306.17 FEET; THENCE SOUTH 89 DEGREES 49 MINUTES 18 SECONDS EAST, ALONG THE NORTH LINE OF SAID NORTHWEST ¼, A DISTANCE OF 849.51 FEET TO THE POINT OF BEGINNING.

PARCEL CONTAINS 1,525,700 SQUARE FEET (35.025 ACRES). THE TERRITORY SOUGHT TO BE ANNEXED HAS NO RESIDENTS.

I further certify that the plat attached hereto is a true and correct plat of the territory annexed and that the boundaries of the Third Aldermanic District have been extended to include the above description and at the time of the original annexation there were (0) residents in population in said territory.

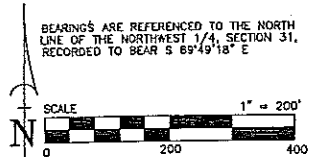
Dated at Neenah, Wisconsin this 19th day of October 2006.


Patricia A. Sturn, City Clerk



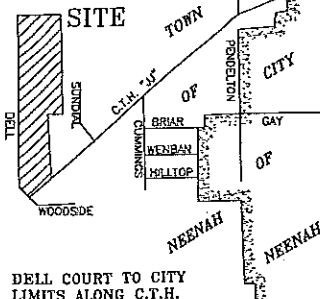
REFERENCE DRAWING

FOR ANNEXATION TO THE
CITY OF NEENAH



35.025 ACRES

ANNEXATION SITE



DELL COURT TO CITY
LIMITS ALONG C.T.H.
"JJ" IS 5200±
DELL COURT TO CITY
LIMITS BY CLOSEST
DISTANCE IS 2800±

PROJECT NO. 682-000
FILE 682000ANNEX
THIS INSTRUMENT WAS DRAFTED BY: DWS

UNPLATTED LANDS
KATHERINE G. DEVEREAUX

NORTHWEST CORNER
SECTION 31
T 20 N, R 17 E
S 89°49'18" E 2237.60'
1368.00'

66' OFFICIALLY MAPPED
ROAD AS MAPPED BY THE
CITY OF NEENAH

66' OFFICIALLY
MAPPED ROAD
AS MAPPED BY
THE CITY OF
NEENAH

NORTH 1/4 CORNER
SECTION 31
T 20 N, R 17 E

NORTH LINE OF THE SOUTH
1/2 OF THE FRACTIONAL
NW1/4 OF SECTION 31 AS
EVIDENCED, OCCUPIED, AND
SURVEYED BY OTHERS

66' CITY OF
NEENAH
OFFICIALLY
MAPPED ROAD

NORTH LINE OF THE SOUTH
1/2 OF THE FRACTIONAL
NW1/4 OF SECTION 31

S 89°39'69" W 35.16'

LOT 1
CSM #5462

LOT 2
CSM #5462

LOT 1
CSM #5462

LOT 2
CSM #5462

LOT 1
CSM #5462

LOT 2
CSM #5462

LOT 1
CSM #5462

LOT 2
CSM #5462

LOT 1
CSM #5462

LOT 2
CSM #5462

LOT 1
CSM #5462

LOT 2
CSM #5462

LOT 1
CSM #5462

LOT 2
CSM #5462

LOT 1
CSM #5462

LOT 2
CSM #5462

LOT 1
CSM #5462

LOT 2
CSM #5462

LOT 1
CSM #5462

LOT 2
CSM #5462

LOT 1
CSM #5462

DELL COURT

UNPLATTED LANDS
JAMES SEELON

UNPLATTED LANDS
ROBERT & KATHY
GRASSMAN

UNPLATTED LANDS
JLA S. BOYSON

UNPLATTED LANDS
NORMAN WRIGHT

UNPLATTED LANDS
GEORGE REDDIN

UNPLATTED LANDS
JAMES SEELON

UNPLATTED LANDS
JAMES SEELON

DELL COURT

UNPLATTED LANDS
JAMES SEELON

UNPLATTED LANDS
ROBERT & KATHY
GRASSMAN

UNPLATTED LANDS
JLA S. BOYSON

UNPLATTED LANDS
NORMAN WRIGHT

UNPLATTED LANDS
GEORGE REDDIN

UNPLATTED LANDS
JAMES SEELON

UNPLATTED LANDS
JAMES SEELON

DELL COURT

UNPLATTED LANDS
JAMES SEELON

UNPLATTED LANDS
ROBERT & KATHY
GRASSMAN

UNPLATTED LANDS
JLA S. BOYSON

UNPLATTED LANDS
NORMAN WRIGHT

UNPLATTED LANDS
GEORGE REDDIN

UNPLATTED LANDS
JAMES SEELON

UNPLATTED LANDS
JAMES SEELON

DELL COURT

UNPLATTED LANDS
JAMES SEELON

UNPLATTED LANDS
ROBERT & KATHY
GRASSMAN

UNPLATTED LANDS
JLA S. BOYSON

UNPLATTED LANDS
NORMAN WRIGHT

UNPLATTED LANDS
GEORGE REDDIN

UNPLATTED LANDS
JAMES SEELON

UNPLATTED LANDS
JAMES SEELON

DELL COURT

UNPLATTED LANDS
JAMES SEELON

UNPLATTED LANDS
ROBERT & KATHY
GRASSMAN

UNPLATTED LANDS
JLA S. BOYSON

UNPLATTED LANDS
NORMAN WRIGHT

UNPLATTED LANDS
GEORGE REDDIN

UNPLATTED LANDS
JAMES SEELON

UNPLATTED LANDS
JAMES SEELON

DELL COURT

UNPLATTED LANDS
JAMES SEELON

UNPLATTED LANDS
ROBERT & KATHY
GRASSMAN

UNPLATTED LANDS
JLA S. BOYSON

UNPLATTED LANDS
NORMAN WRIGHT

UNPLATTED LANDS
GEORGE REDDIN

UNPLATTED LANDS
JAMES SEELON

UNPLATTED LANDS
JAMES SEELON

DELL COURT

UNPLATTED LANDS
JAMES SEELON

UNPLATTED LANDS
ROBERT & KATHY
GRASSMAN

UNPLATTED LANDS
JLA S. BOYSON

UNPLATTED LANDS
NORMAN WRIGHT

UNPLATTED LANDS
GEORGE REDDIN

UNPLATTED LANDS
JAMES SEELON

UNPLATTED LANDS
JAMES SEELON

DELL COURT

UNPLATTED LANDS
JAMES SEELON

UNPLATTED LANDS
ROBERT & KATHY
GRASSMAN

UNPLATTED LANDS
JLA S. BOYSON

UNPLATTED LANDS
NORMAN WRIGHT

UNPLATTED LANDS
GEORGE REDDIN

UNPLATTED LANDS
JAMES SEELON

UNPLATTED LANDS
JAMES SEELON

DELL COURT

UNPLATTED LANDS
JAMES SEELON

UNPLATTED LANDS
ROBERT & KATHY
GRASSMAN

UNPLATTED LANDS
JLA S. BOYSON

UNPLATTED LANDS
NORMAN WRIGHT

UNPLATTED LANDS
GEORGE REDDIN

UNPLATTED LANDS
JAMES SEELON

UNPLATTED LANDS
JAMES SEELON

DELL COURT

UNPLATTED LANDS
JAMES SEELON

UNPLATTED LANDS
ROBERT & KATHY
GRASSMAN

UNPLATTED LANDS
JLA S. BOYSON

UNPLATTED LANDS
NORMAN WRIGHT

UNPLATTED LANDS
GEORGE REDDIN

UNPLATTED LANDS
JAMES SEELON

UNPLATTED LANDS
JAMES SEELON

DELL COURT

UNPLATTED LANDS
JAMES SEELON

UNPLATTED LANDS
ROBERT & KATHY
GRASSMAN

UNPLATTED LANDS
JLA S. BOYSON

UNPLATTED LANDS
NORMAN WRIGHT

UNPLATTED LANDS
GEORGE REDDIN

UNPLATTED LANDS
JAMES SEELON

UNPLATTED LANDS
JAMES SEELON

DELL COURT

UNPLATTED LANDS
JAMES SEELON

UNPLATTED LANDS
ROBERT & KATHY
GRASSMAN

UNPLATTED LANDS
JLA S. BOYSON

UNPLATTED LANDS
NORMAN WRIGHT

UNPLATTED LANDS
GEORGE REDDIN

UNPLATTED LANDS
JAMES SEELON

UNPLATTED LANDS
JAMES SEELON

DELL COURT

UNPLATTED LANDS
JAMES SEELON

UNPLATTED LANDS
ROBERT & KATHY
GRASSMAN

UNPLATTED LANDS
JLA S. BOYSON

UNPLATTED LANDS
NORMAN WRIGHT

UNPLATTED LANDS
GEORGE REDDIN

UNPLATTED LANDS
JAMES SEELON

UNPLATTED LANDS
JAMES SEELON

DELL COURT

UNPLATTED LANDS
JAMES SEELON

UNPLATTED LANDS
ROBERT & KATHY
GRASSMAN

UNPLATTED LANDS
JLA S. BOYSON

UNPLATTED LANDS
NORMAN WRIGHT

UNPLATTED LANDS
GEORGE REDDIN

UNPLATTED LANDS
JAMES SEELON

UNPLATTED LANDS
JAMES SEELON

DELL COURT

UNPLATTED LANDS
JAMES SEELON

UNPLATTED LANDS
ROBERT & KATHY
GRASSMAN

UNPLATTED LANDS
JLA S. BOYSON

UNPLATTED LANDS
NORMAN WRIGHT

UNPLATTED LANDS
GEORGE REDDIN

UNPLATTED LANDS
JAMES SEELON

UNPLATTED LANDS
JAMES SEELON

DELL COURT

UNPLATTED LANDS
JAMES SEELON

UNPLATTED LANDS
ROBERT & KATHY
GRASSMAN

UNPLATTED LANDS
JLA S. BOYSON

UNPLATTED LANDS
NORMAN WRIGHT

UNPLATTED LANDS
GEORGE REDDIN

UNPLATTED LANDS
JAMES SEELON

UNPLATTED LANDS
JAMES SEELON

DELL COURT

UNPLATTED LANDS
JAMES SEELON

UNPLATTED LANDS
ROBERT & KATHY
GRASSMAN

UNPLATTED LANDS
JLA S. BOYSON

UNPLATTED LANDS
NORMAN WRIGHT

UNPLATTED LANDS
GEORGE REDDIN

UNPLATTED LANDS
JAMES SEELON

UNPLATTED LANDS
JAMES SEELON

DELL COURT

UNPLATTED LANDS
JAMES SEELON

UNPLATTED LANDS
ROBERT & KATHY
GRASSMAN

UNPLATTED LANDS
JLA S. BOYSON

UNPLATTED LANDS
NORMAN WRIGHT

UNPLATTED LANDS
GEORGE REDDIN

UNPLATTED LANDS
JAMES SEELON

UNPLATTED LANDS
JAMES SEELON

DELL COURT

UNPLATTED LANDS
JAMES SEELON

UNPLATTED LANDS
ROBERT & KATHY
GRASSMAN

UNPLATTED LANDS
JLA S. BOYSON

UNPLATTED LANDS
NORMAN WRIGHT

UNPLATTED LANDS
GEORGE REDDIN

UNPLATTED LANDS
JAMES SEELON

UNPLATTED LANDS
JAMES SEELON

DELL COURT

UNPLATTED LANDS
JAMES SEELON

UNPLATTED LANDS
ROBERT & KATHY
GRASSMAN

UNPLATTED LANDS
JLA S. BOYSON

UNPLATTED LANDS
NORMAN WRIGHT

UNPLATTED LANDS
GEORGE REDDIN

UNPLATTED LANDS
JAMES SEELON

UNPLATTED LANDS
JAMES SEELON

DELL COURT

UNPLATTED LANDS
JAMES SEELON

UNPLATTED LANDS
ROBERT & KATHY
GRASSMAN

UNPLATTED LANDS
JLA S. BOYSON

UNPLATTED LANDS
NORMAN WRIGHT

UNPLATTED LANDS
GEORGE REDDIN

UNPLATTED LANDS
JAMES SEELON

UNPLATTED LANDS
JAMES SEELON

DELL COURT

UNPLATTED LANDS
JAMES SEELON

UNPLATTED LANDS
ROBERT & KATHY
GRASSMAN

UNPLATTED LANDS
JLA S. BOYSON

UNPLATTED LANDS
NORMAN WRIGHT

UNPLATTED LANDS
GEORGE REDDIN

UNPLATTED LANDS
JAMES SEELON

UNPLATTED LANDS
JAMES SEELON

DELL COURT

UNPLATTED LANDS
JAMES SEELON

UNPLATTED LANDS
ROBERT & KATHY
GRASSMAN

UNPLATTED LANDS
JLA S. BOYSON

UNPLATTED LANDS
NORMAN WRIGHT

UNPLATTED LANDS
GEORGE REDDIN

UNPLATTED LANDS
JAMES SEELON

UNPLATTED LANDS
JAMES SEELON

STATE OF WISCONSIN
RECEIVED & FILED

OCT 23 2006

DOUGLAS LA FOLLETTE
SECRETARY OF STATE



Martenson & Eisele, Inc.

Planning - Surveying - Engineering - Architecture

1377 Midway Road, Menasha, WI 54952

Phone (920) 731-0361 Fax (920) 731-4378

www.martenson-eisele.com

lfe@martenson-eisele.com